

## AVAILABLE REPAIR KITS

Rotary Head Kit - Major:

P/N 2100372

Includes items 2, 3, 4, 5, 6, 7, 8, 9, 10, 11, 12, 13, 14, 15 and 17

Rotary Head Kit - Minor:

P/N 2100203

Includes items 8, 9, 11, and 13

Complete Rotary Head Kit:

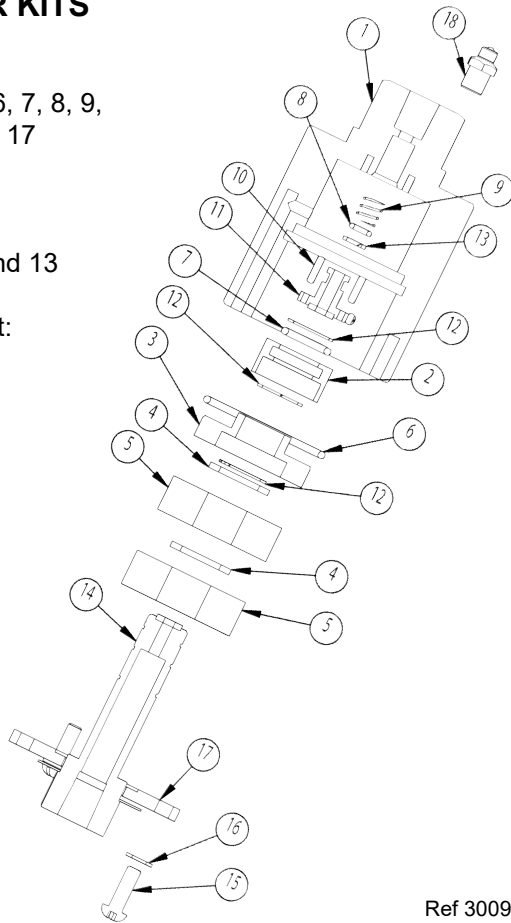
P/N 2103226

Includes all items

Replacement nozzles

for arm 2103224:

925020M (3 required)



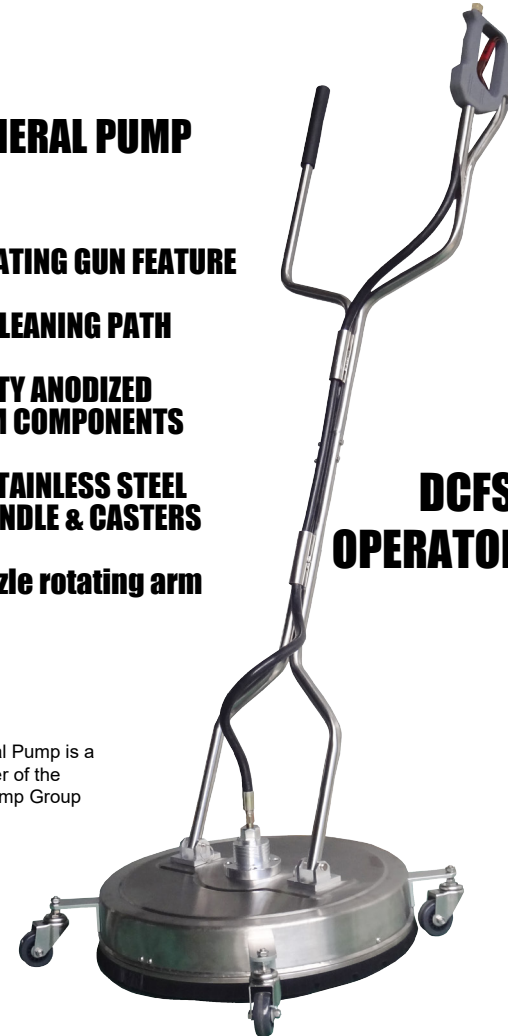
Ref 300918 Rev. D  
01-19

# THE HAMMERHEAD PROFESSIONAL FLAT SURFACE CLEANER

## FROM GENERAL PUMP

- COMPENSATING GUN FEATURE
- FULL 22" CLEANING PATH
- HEAVY-DUTY ANODIZED ALUMINUM COMPONENTS
- RUGGED STAINLESS STEEL COVER, HANDLE & CASTERS
- Three nozzle rotating arm

## DCFSCS22Z OPERATOR'S MANUAL



General Pump is a member of the Interpump Group

Ref 300918 Rev. D  
01-19



### **WARNING: Read Before Operating Machine**

**Always wear protective eyewear**

**Keep clear of rotating nozzles**

**Never lock trigger gun open with any device**

**Drain water in cold weather to avoid freezing**

*Tampering with any part of this machine will void all warranties*



ITEM NO.	PART NO.	DESCRIPTION	QTY.
1	2500014	HOUSING	1
2	2520030	RETAINER, BEARING	1
3	2520028	RETAINER, BEARING	1
4	2520027	SPACER, BEARING	2
5	2640004	BEARING	2
6	2701012	O-RING	1
7	2701011	O-RING	1
8	2701010	O-RING	1
9	2720007	SPRING	1
10	2530008	PIN	2
11	2530007	STEM, SMALL	1
12	2520029	SNAP RING	3
13	2710000	BACK UP RING	1
14	2520113	STEM	1
15	2200092	SCREW, M5 X 16	3
16	2200050	WASHER	3
17	2500018	RETAINER, BEARING	1
18	2640012	ZERK, GREASE	1

## Operating Instructions

1. Connect inlet filter, D40014, to FSC gun inlet.
2. Connect to Pressure Washer.
3. Turn water on and open valve. Open trigger gun for flow of water through nozzles. Nozzles must have flowing spray. If not, remove tips and clean; reassemble, making sure that groove of nozzle is parallel to spray bar. Use thread sealant when installing nozzles.
4. Start Pressure Washer. The Hammerhead is ready for operation.
5. Walk slowly behind the Hammerhead cleaning as you go. If striping occurs, slow down your pace.
6. Periodically check weep hole on bottom of swivel. Water will seep slowly; if water shoots out, stop and replace seals. Swivel assembly can be rebuilt.
7. For maximum effectiveness keep spray tips clean. If the machine vibrates, stop and clean spray tips.
8. Grease the swivel with one or two grease gun pumps every 200 hours (or once about every 30 days of use).

**NOTE: After 50 hours of use, remove the inlet filter, take apart and clean filter screen.**

**DO NOT ALLOW MACHINE TO REMAIN STATIONARY ON SOFT SURFACES SUCH AS WOOD.**

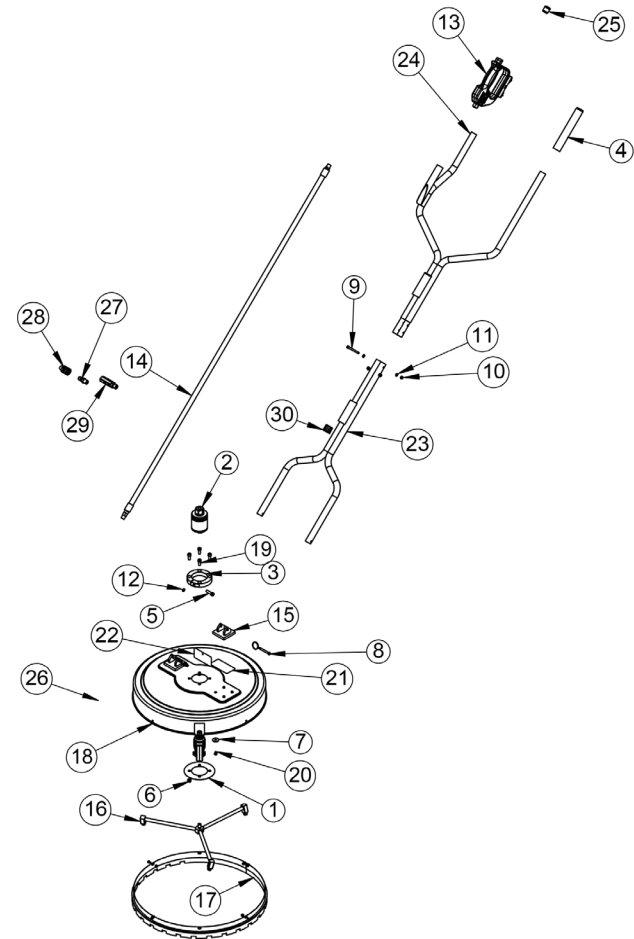
Caution: Striking any raised obstacle during operation will damage machine. If contact does occur and results in vibration when operating machine, STOP and replace spray bar. Continued operation could result in serious injury or damage to machine.

Operating Pressures: 1,000 to 4,000 PSI  
 Max Flow: 8.0 GPM  
 Dimensions: 70" x 23" x 23"  
 Weight: 24.5 lbs.

### General Pump

1174 Northland Drive • Mendota Heights, MN 55120  
 Phone: 651.686.2199 • Fax: 800.535.1745  
 www.generalpump.com • sales@gpcompanies.com

Ref 300918 Rev. D  
 01-19



ITEM NO.	PART NO.	DESCRIPTION	QTY.	ITEM NO.	PART NO.	DESCRIPTION	QTY.
1	2103226	SWIVEL	1	15	2200053	NUT, M8X1.25	4
2	2103224	ARM, ROTARY, FSC	1	16	D10079	PLUG, 3/8 X 3/8-M	1
3	2630010	PLATE, RETAINING	1	17	D10075	COUPLER, 3/8 X 3/8-M	1
4	2500017	COLLAR, SPLIT	1	18	2500016	BLOCK, HANDLE	2
5	2200093	SHCS	4	19	2200094	BOLT, M6	8
6	2200055	SHCS, M8 X 30	1	20	2203406	WASHER, M6	8
7	2550161	HANDLE, LOWER	1	21	2200026	NUT, NYLOK, M6	2
8	2550160	HANDLE, FSC, UPPER	1	22	2202010	PIN, 55MM, W/RING, SS	2
9	2660047	GRIP, HANDLE	1	23	2200058	HHCS, M6 X 60	2
10	2660224	PLUG, HANDLE	1	24	2200018	WASHER, M6	4
11	2103223	ASSY, BRUSH	1	25	2203507	WASHER	1
12	DCG4000FSC	GUN, FSC	1	26	2540070	DECK, FSC, SST	1
13	2103228	CASTER KIT,SS	1	27	D40015	FILTER, IN-LINE, SST	1
14	2702000	HOSE, FSC	1	28	2660297	GROMMET, FSC HANDLE	2

Ref 300918 Rev. D  
 01-19