

The ZRMAX is a high pressure, rotating, zero-degree nozzle. The unique internal design allows aim-and-spray operation, even when cleaning overhead, and permits easy replacement of all wear parts. Sized according to flow rate, a ZRMAX is perfect for your toughest cleaning tanks.

NOZZLES



### SPECIFICATIONS

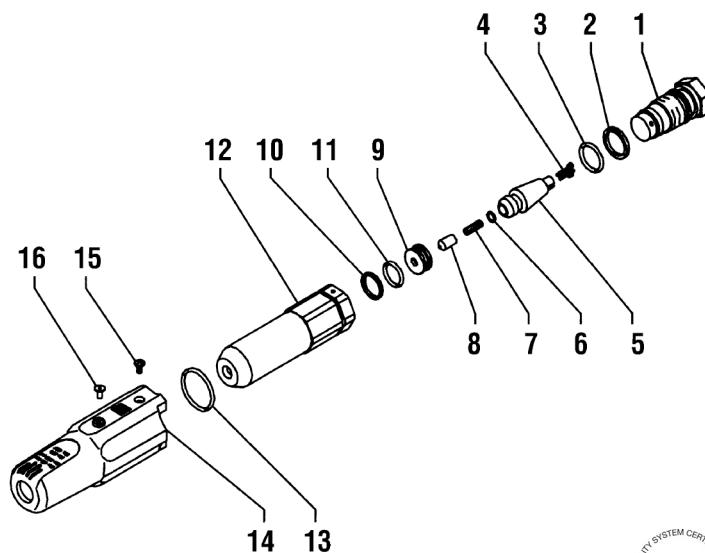
Max Pressure	5,800 PSI
Max Flow	6.6 GPM
Max Temp	176° F
Inlet Port Size	1/4-19 BSPP-F
Dimensions	Ø 1.5" O.D. x 4.1" Long
Weight	0.75 Lb.
Materials	Brass, Plastic, Ceramic, Buna-N

### FLOW CHART

		Pressure (PSI)						
		1,450	2,175	2,900	3,625	4,350	5,075	5,800
GPM	ZRMAX581	2.3	2.8	3.3	3.7	4.0	4.4	4.7
	ZRMAX583	3.3	4.0	4.7	5.2	5.7	6.2	6.6

### PARTS LIST

No.	Part No.	Description	Qty.
1	10060570	Inlet Nipple, 1/4" - ZRMAX581	1
	10060970	Inlet Nipple, 1/4" - ZRMAX583	1
2*	90508500	Anti-extrusion Ring	1
3*	90359100	O-ring	1
4*	10045351	Valve	1
5	10056402	Rotor	1
6*	90357400	O-ring	1
7	98667400	Nozzle, 140 Red - ZRMAX581	1
	98678000	Nozzle, 160 Black - ZRMAX583	1
8*	10045609	Tip, Rotor	1
9*	10060602	Seat	1
10*	90507500	Anti-extrusion Ring	1
11	90358900	O-ring	1
12	10060470	Body	1
13*	90360200	O-ring	1
14	10060251	Cover, Red	1
15	99070200	Screw	1
16	98190500	Plug, Red - ZRMAX581	1
	98190900	Plug, Black - ZRMAX583	1
*	100834	Repair Kit	



Note: Torque item #4 (end cap) to 15 ft.-lbs



General Pump is a member of the Interpump Group

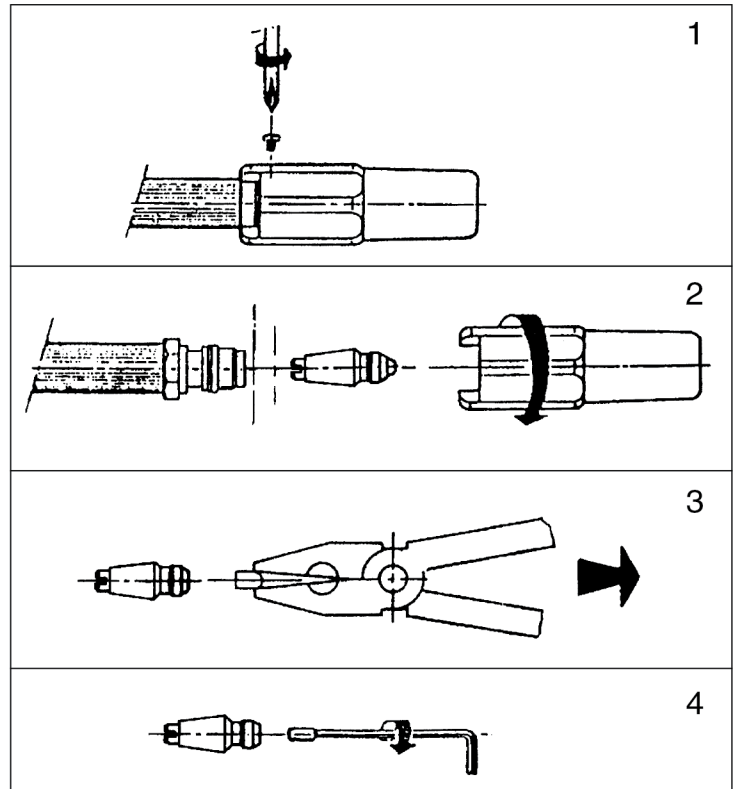
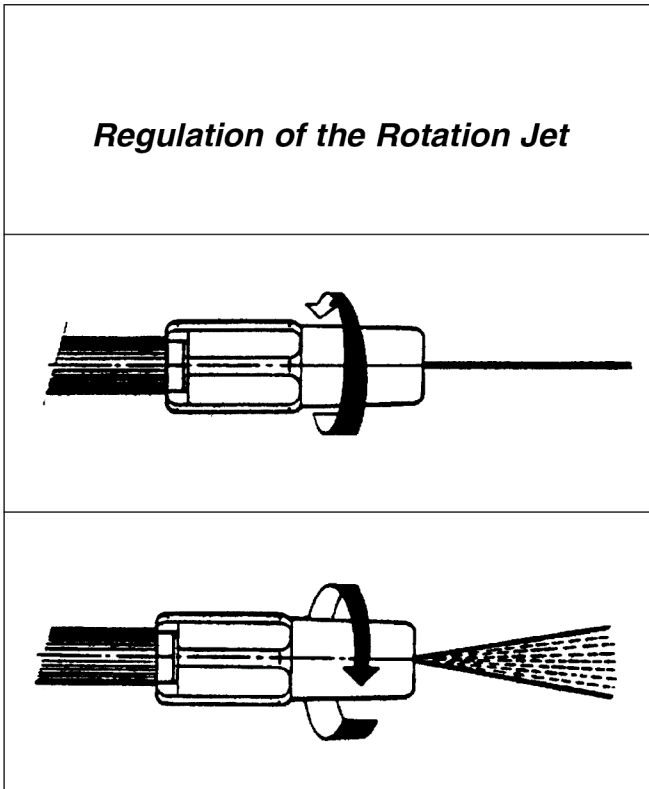
Ref 300338 Rev. B  
01-19



NOZZLES

**USING THE ZRMAX**

**CLEANING & CHANGING NOZZLE**



**IMPORTANT**

**When installing the ZRMAX, please note:**

Do not tighten the ZRMAX by the plastic cover: use a wrench on the hex portion of the inlet nipple (#1 on parts drawing). This will avoid stripping the holding screw on the plastic cover.