

**FEATURES**

- Professional, industrial high pressure rotating nozzles.
- Stainless steel components.
- Nozzles and seats are made of tungsten carbide.



**SPECIFICATIONS**

| PART NUMBER | 2000 PSI | 3000 PSI | 4000 PSI | 5000 PSI | 6000 PSI | 7000 PSI  | 8000 PSI  | 9000 PSI  | 10000 PSI | 11000 PSI |
|-------------|----------|----------|----------|----------|----------|-----------|-----------|-----------|-----------|-----------|
| ZRMAX112    | 2.02 GPM | 2.47 GPM | 2.85 GPM | 3.19 GPM | 3.49 GPM | 3.77 GPM  | 4.03 GPM  | 4.28 GPM  | 4.51 GPM  | 4.73 GPM  |
| ZRMAX113    | 3.32 GPM | 4.07 GPM | 4.69 GPM | 5.25 GPM | 5.75 GPM | 6.21 GPM  | 6.64 GPM  | 7.04 GPM  | 7.42 GPM  | 7.78 GPM  |
| ZRMAX114    | 4.44 GPM | 5.43 GPM | 6.27 GPM | 7.01 GPM | 7.68 GPM | 8.30 GPM  | 8.87 GPM  | 9.41 GPM  | 9.92 GPM  | 10.40 GPM |
| ZRMAX115    | 5.71 GPM | 6.99 GPM | 8.07 GPM | 9.03 GPM | 9.89 GPM | 10.68 GPM | 11.42 GPM | 12.11 GPM | 12.76 GPM | 13.39GPM  |

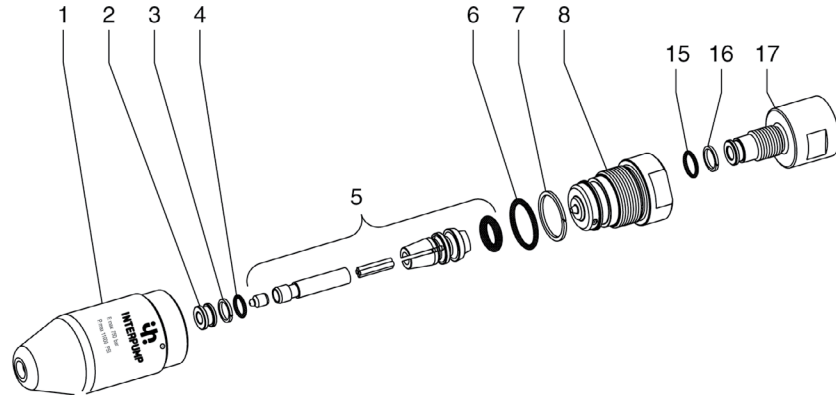
**Maximum Pressure** ..... 11,000 PSI  
**Maximum Temperature** ..... 140° F  
**Inlet Size** ..... 3/8" BSP-F  
**Dimensions** ..... Ø 1.5 O.D. x 4.1 Lg.  
**Weight** ..... 2.2 Lb.  
**Materials** ..... Stainless Steel, Tungsten Carbide

**WARRANTY**

General Pump accessories are warranted by the manufacturer to be free from defects in material and workmanship. Period of warranty shall be 90 days from date product is received by original buyer. Liability of manufacturer under the foregoing warranty is limited to **repair or replacement** at the option of manufacturer of that product which according to the manufacturer's investigation was deemed defective at time of shipment. Damage resulting from neglect, abuse, tampering or misapplication voids this warranty. This warranty is in lieu of all other warranties, expressed or implied, including any warranty of merchantability and/or any and all other obligations or liabilities on the part of the manufacturer.

## Industrial Rotating Nozzle

### PARTS LIST



### ZRMAX112, 113, 114. 115 Industrial Rotating Nozzle

| Item | Part #   | Description                     | Qty. | Item | Part #   | Description               | Qty. |
|------|----------|---------------------------------|------|------|----------|---------------------------|------|
| 1.   | 10062366 | Rotating Nozzle Body            | 1    | 7.   | 90515500 | Anti-extrusion Ring       | 1    |
| 2.   | 10063011 | Seat                            | 1    | 8.   | 10062766 | Fitting, Nipple, ZRMAX112 | 1    |
| 3.   | 90506100 | Anti-extrusion Ring             | 1    |      | 10062666 | Fitting, Nipple, ZRMAX113 | 1    |
| 4.   | 90358200 | O-ring                          | 1    |      | 10062866 | Fitting, Nipple, ZRMAX114 | 1    |
| 5.   | 10739701 | Rotating Tip Assembly, ZRMAX112 | 1    |      | 10064866 | Fitting, Nipple, ZRMAX115 | 1    |
|      | 10739601 | Rotating Tip Assembly, ZRMAX113 | 1    | 15.  | 90358700 | O-ring                    | 1    |
|      | 10739501 | Rotating Tip Assembly, ZRMAX114 | 1    | 16.  | 90506600 | Anti-extrusion Ring       | 1    |
|      | 10740001 | Rotating Tip Assembly, ZRMAX114 | 1    | 17.  | 10064666 | Fitting, Inlet            | 1    |
| 6.   | 90385500 | O-ring                          | 1    |      |          |                           |      |

### IMPORTANT

1. Feed the nozzle with filtered water only, at a maximum temperature of 140<sup>0</sup> F.
2. Before applying pressure to the nozzle, it is necessary to follow the steps listed below:
  - a. Check that the visible parts are not deformed, damaged or cracked.
  - b. Check that the nozzle is fastened correctly onto the lance end.
  - c. Check that the nozzle components are fixed correctly to each other.
3. For safety and durability reasons, the system must be started (ON) keeping the nozzle tipped 45<sup>0</sup> downward, so that the jet hits the ground first.
4. Before using the nozzle, make sure that persons, animals or things that might be damaged by the high pressure jet created by the nozzle are not within its radius of action.
5. Never direct the jet at persons or animals, even though they are at a safe distance and even though the nozzle is not under pressure.
6. When the nozzle is not in use, engage the safety lock in the OFF position; in addition to this, the nozzle must be stored taking care that it is unreachable and cannot be used by unauthorized people.
7. Before carrying out any inspection on the nozzle and before storing it, make sure that the whole circuit is totally released from possible residual pressure, even though the system is not in function.