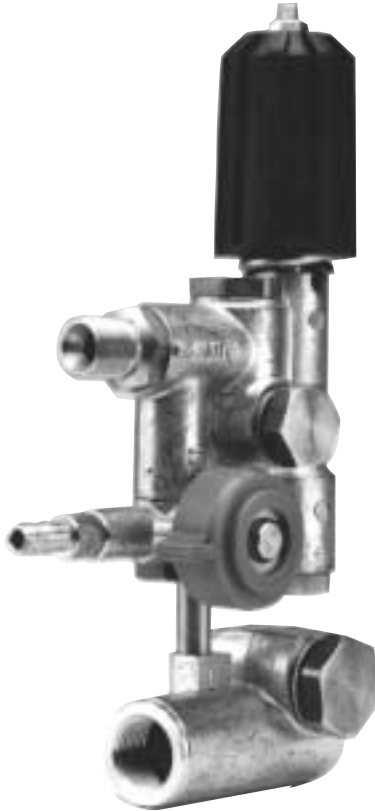


*Trapped Pressure Control Set Unloader*

**Models W2.1, W2.1L, W2.2L**  
**TRAPPED PRESSURE CONTROL SET UNLOADER**  
 with Chemical Injector



**FEATURES**

- Reduces Cost – Eliminates the need for fittings and bypass hose.
- Compact Design – Features forged brass body and hardware.
- Versatile – Mounts in seconds to either side of pump manifold.
- Adjustable Unloader Valve – Trapped pressure type with internal bypass system
- Built-In Chemical Injector – Includes variable metering adjustment.

**SPECIFICATIONS**

|                     |                     |             |
|---------------------|---------------------|-------------|
| Flow Range:         | W2.1, W2.1L         | 2.9-4.5 GPM |
|                     | W2.2L               | 4.5-6.0 GPM |
| Maximum Pressure    | 3000 PSI            |             |
| Maximum Temperature | 200° F              |             |
| Port Sizes: Inlet   | 1/2-14 BSPP - F     |             |
| Outlet              | 3/8-19 BSPP - M     |             |
| Chemical Inlet      | 5/16 in. I.D. Hose  |             |
| Weight              | 4 lb.               |             |
| Dimensions          | 8.5 x 2.0 x 5.0 in. |             |

*General Pump recommends using a safety relief device in conjunction with this unloader valve when installed on a positive displacement pump. General Pump is not liable and assumes no responsibility for this valve when used in a customer's high pressure system.*

**Model W2.1, W2.1L**

**2.9-4.5 GPM**

Model W2.1 used on pump models TS1371, TT1411, TT1611, TT9351, TT9441, T9971, All EZ Pumps

Model W2.1L used on pump models T811, TS1011, TS1311, TS1331, TS1511, TS1711, TS2011, T9131, T9211

**Model W2.2L**

**4.5-6.0 GPM**

Model W2.2L used on pump models T821, T921, T1021, T1321, T1621, T9121, T9161, TS821, TS921, TS1321, TS1521, TS1621, TS2021

## Trapped Pressure Control Set Unloader

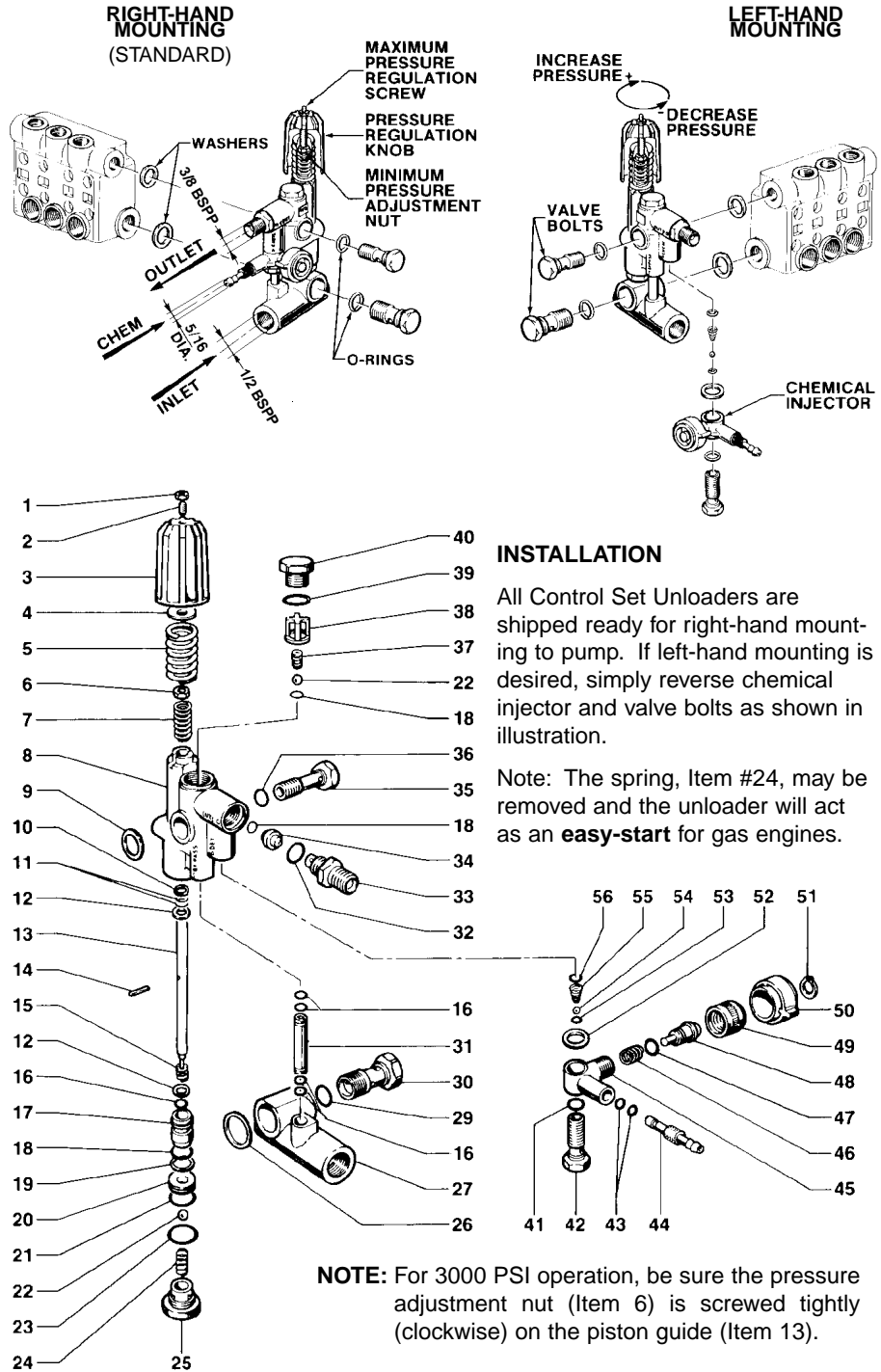
### PARTS LIST

#### W2 Pressure Control Set

| No. | Part No.   | Description                | Repair Kit | Qty. |
|-----|------------|----------------------------|------------|------|
| 1.  | 92.2020.00 | Nut, M6                    |            | 1    |
| 2.  | 99.1848.00 | Screw, M6 x 16             |            | 1    |
| 3.  | 36.3145.02 | Knob                       |            | 1    |
| 4.  | 36.3141.64 | Guide, Spring              |            | 1    |
| 5.  | 94.7516.00 | Spring                     | 93         | 1    |
| 6.  | 92.2200.00 | Nut, M8                    |            | 1    |
| 7.  | 94.7400.00 | Spring                     |            | 1    |
| 8.  | 36.3134.01 | Body                       |            | 1    |
| 9.  | 93.1858.00 | Washer, M17.5              |            | 1    |
| 10. | 90.5034.00 | Ring, Back-up              | 93         | 1    |
| 11. | 90.3577.00 | O-Ring, .302 x .070        | 93         | 2    |
| 12. | 96.7009.00 | Washer, M8                 |            | 2    |
| 13. | 36.3143.73 | Guide, Piston              |            | 1    |
| 14. | 97.6660.00 | Pin                        |            | 1    |
| 15. | 94.7384.00 | Spring                     | 93         | 1    |
| 16. | 90.3574.00 | O-Ring, .239 x .070        | 93         | 5    |
| 17. | 36.3142.66 | Piston, Control            |            | 1    |
| 18. | 90.3822.00 | O-Ring, .391 x .103        | 93, 94     | 3    |
| 19. | 90.5065.00 | Ring, Back-up, M10.6 x 15  | 93         | 1    |
| 20. | 36.3137.66 | Seat, Valve                | 93         | 1    |
| 21. | 90.3593.00 | O-Ring, .614 x .070        | 93         | 1    |
| 22. | 97.4838.00 | Ball, 13/32"               | 93         | 2    |
| 23. | 90.3843.00 | O-Ring, .703 x .103        | 93         | 1    |
| 24. | 94.7374.00 | Spring                     | 93         | 1    |
| 25. | 36.3136.70 | Screw, M22 x 1.5           |            | 1    |
| 26. | 93.1972.00 | Washer, M21.5              |            | 1    |
| 27. | 36.3135.22 | Body, Banjo                |            | 1    |
| 29. | 90.3841.00 | O-Ring, .674 x .103        | 93         | 1    |
| 30. | 36.3139.70 | Fitting, Banjo             |            | 1    |
| 31. | 36.3138.93 | Bypass Tube; W2.1          |            | 1    |
|     | 36.3162.93 | W2.1L, W2.2L               |            |      |
| 32. | 90.3832.00 | O-Ring, .549 x .103        | 94         | 1    |
| 33. | 10.0078.70 | Nipple                     |            | 1    |
| 34. | 10.0076.66 | Nozzle: Ø.087" W2.1, W2.1L |            | 1    |
|     | 10.0077.66 | Ø.098" W2.2L               |            |      |
| 35. | 36.3140.70 | Screw, 3/8"                |            | 1    |
| 36. | 90.3827.00 | O-Ring, .469 x .103        | 93         | 1    |
| 37. | 94.7355.00 | Spring                     | 93         | 1    |
| 38. | 36.3104.51 | Guide, Valve               | 93         | 1    |
| 39. | 90.3839.00 | O-Ring, .625 x .103        | 93         | 1    |
| 40. | 98.2152.00 | Cap, M20                   |            | 1    |
| 41. | 90.3585.00 | O-Ring, .426 x .070        | 94         | 1    |
| 42. | 36.2563.70 | Seat, Valve                |            | 1    |
| 43. | 90.3570.00 | O-Ring, .176 x .070        | 94         | 2    |
| 44. | 36.2566.70 | Fitting, Hose Barb         |            | 1    |
| 45. | 36.3146.41 | Body, Injector             |            | 1    |
| 46. | 94.7383.00 | Spring                     | 94         | 1    |
| 47. | 90.3580.00 | O-Ring, .344 x .070        | 94         | 1    |
| 48. | 36.3147.70 | Shutter                    |            | 1    |
| 49. | 36.3148.70 | Insert, Knob               |            | 1    |
| 50. | 36.3149.51 | Knob, Regulation           |            | 1    |
| 51. | 90.0545.00 | Circlip                    |            | 1    |
| 52. | 96.7280.00 | Washer, M14                |            | 1    |
| 53. | 90.3572.00 | O-Ring, .208 x .070        | 94         | 1    |
| 54. | 97.4782.00 | Ball, 7/32"                | 94         | 1    |
| 55. | 94.8217.00 | Spring, Taper              | 94         | 1    |
| 56. | 90.3582.00 | O-Ring, .364 x .070        | 94         | 1    |

Repair Kit 93  
Includes No.'s: 5, 10, 11, 15, 16, 18, 19, 20, 21, 22, 23, 24, 28, 29, 36, 37, 38, 39

Repair Kit 94  
Includes No.'s: 18, 32, 41, 43, 46, 47, 53, 54, 55, 56



### INSTALLATION

All Control Set Unloaders are shipped ready for right-hand mounting to pump. If left-hand mounting is desired, simply reverse chemical injector and valve bolts as shown in illustration.

Note: The spring, Item #24, may be removed and the unloader will act as an **easy-start** for gas engines.

**NOTE:** For 3000 PSI operation, be sure the pressure adjustment nut (Item 6) is screwed tightly (clockwise) on the piston guide (Item 13).

### WARRANTY

General Pump accessories are warranted by the manufacturer to be free from defects in material and workmanship. Period of warranty shall be 90 days from date product is received by original buyer. Liability of manufacturer under the foregoing warranty is limited to **repair or replacement** at the option of manufacturer of that product which according to the manufacturer's investigation was deemed defective at time of shipment. Damage resulting from neglect, abuse, tampering or misapplication voids this warranty. This warranty is in lieu of all other warranties, expressed or implied, including any warranty of merchantability and/or any and all other obligations or liabilities on the part of the manufacturer.