**FEATURES**

- Ideal for use in systems which incorporate a gasoline engine.
- Eliminates back pressure in system when pulling a manual start engine.
- Brass and stainless steel construction.
- Adjustable pressure control knob

Note: For proper operation of the ZKHM Unloader, it must be mounted as shown in the upright position.

SPECIFICATIONS

Part Number		ZKHM (without adjusting knob) ZKHM1
Maximum Volume		10.8 GPM
Maximum Discharge Pressure		0 to 3000 PSI
Maximum Temperature		165° F
Port Size	Inlet	3/8"-19 BSP-F
	Outlet	1/4"-19 BSP-F
	Outlet	3/8"-19 BSP-M
	Bypass (2)	3/8"-19 BSP-F
Dimensions		2.75" x 3.75" x 6.5"
Weight		2.5 lb.

General Pump recommends using a safety relief device in conjunction with this unloader valve when installed on a positive displacement pump. General Pump is not liable and assumes no responsibility when used in a customer's high pressure system.



General Pump
is a member of
the Interpump Group

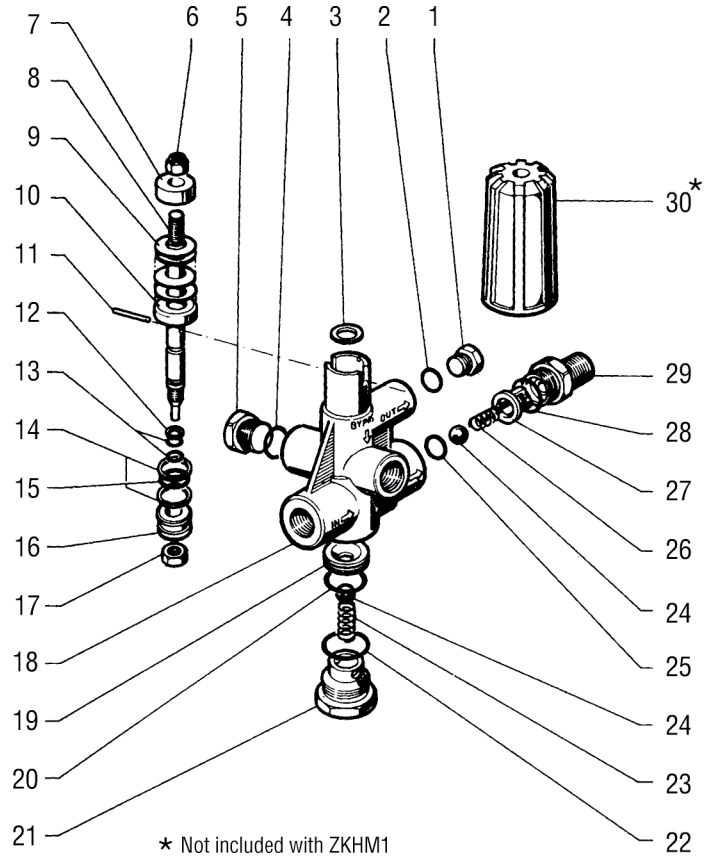


300106 Rev. F
08-18



PARTS LIST

No.	Part No	Description	QTY.
1	98204100	Cap	1
2*	90358500	O-Ring	1
3	96710200	Washer	1
4*	90383300	O-Ring	1
5	98210000	Cap	1
6	92220800	Nut	1
7	36311364	Spring Guide	1
8	36310766	Piston Guide	1
9*	94849500	Washer	20
10	36310976	Spring Plate	1
11	97614300	Pin	1
12*	90502500	Anti-extrusion Ring	1
13*	90357500	O-Ring	2
14*	90508000	Anit-extrusion Ring	2
15*	90383100	O-Ring	1
16	36311266	Piston	1
17	94444000	Nut	1
18	36320101	Body	1
19*	36310266	Valve Seat	1
20*	90359400	O-Ring	1
21	36310370	Cap	1
22*	90384700	O-Ring	1
23*	94737400	Spring (OPTIONAL)	1
24*	97483800	Ball	2
25*	90382200	O-Ring	1
26*	94735500	Spring	1
27*	36310541	Valve Guide	1
28*	90384300	O-Ring	1
29	36310570	Nipple	1
30	36311002	Knob	1
*	K72	Repair Kit	



Note: For proper operation of the HM Unloader, it must be mounted in the vertical position. The optional spring (item #23) must be used if the unloader is mounted in any position other than vertical.

