

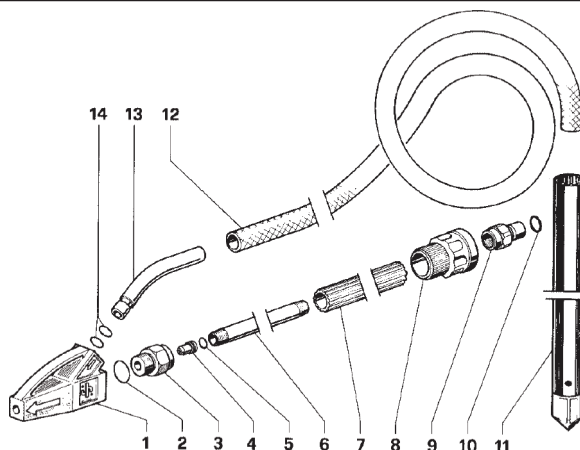


**FEATURES**

- Tungsten carbide nozzle
- Reinforced PVC sand hose
- Quick disconnect lance fitting

**SPECIFICATIONS**

Part Number	Z0SANDKIT1
Maximum Pressure	1450 PSI
Minimum Volume	8 GPM
Maximum Volume	2.7 GPM
Dimensions:	176°F
Sandblast Head & Lance	13.5 x 1.4 x 2.5"
Sand Poker	16.3 x Ø 1.0"
Hose	9 ft. x Ø 1.0"



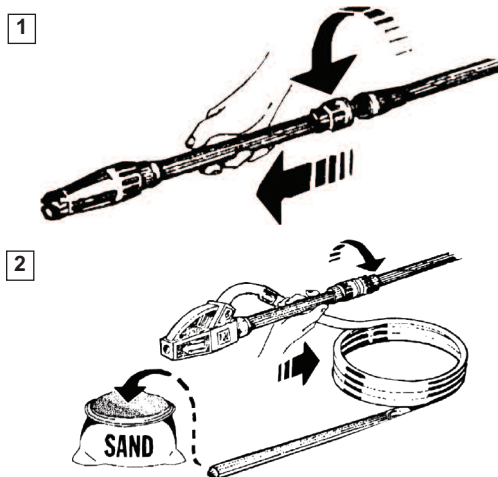
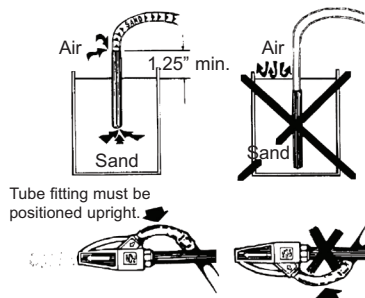
**PARTS LIST**

No.	Part No.	Description	Qty.	No.	Part No.	Description	Qty.
1	10033101	Sandblast Head	1	8	10029551	Connector	1
2	90359300	O-ring	1	9	10029770	Male Coupling	1
3	10012970	Nipple	1	10	90382000	O-ring	1
4	10013366	Nozzle	1	11	ZMSNDPOKER	Sand Probe	1
5	90357600	O-ring	1	12	10032098	Hose	1
6	18203389	Tube	1	13	10031189	Tube Fitting	1
7	18010698	Tube Protector	1	14	90358200	O-ring	1

**INSTRUCTIONS**

- 1) Remove nozzle end from lance.
- 2) Put sandblasting kit on end of lance. Stick sand probe in sand leaving at least 1.25 inches above sand level to allow air flow to carry the sand. The sandblast head tube fitting (#13) must be upright when spraying for proper mixing and flow of sand.

**WARNING: Use proper eye and skin protection. Do not direct spray at yourself or any other person. Keep hands clear of spray nozzle.**



General Pump is a member of the Interpump Group

Ref 300120 Rev B  
11-09

