

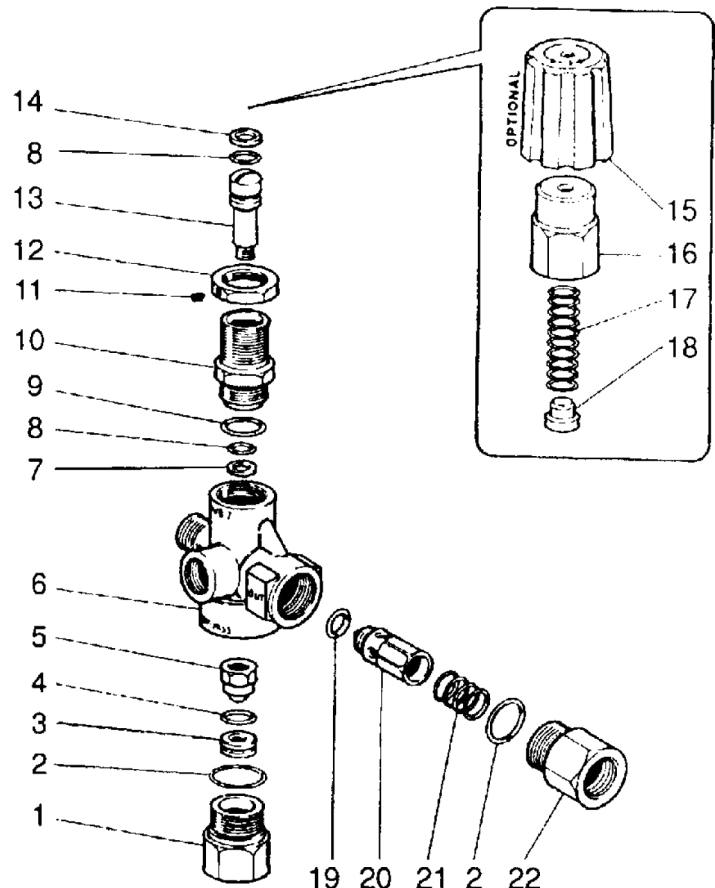
**SPECIFICATIONS**

Part Number	YVB7K
Maximum Flow	7.8 GPM
Maximum Discharge Pressure	3140 PSI
Maximum Temperature	195 °F
Port Sizes:	
Inlet	3/8" NPT-M
Outlet	3/8" NPT-M
Bypass	3/8" NPT-F
Dimensions	5.29" x 3" x 2.3"
Shipping Weight	1.32 lbs.
Materials	Brass, Stainless Steel, Plastic

General Pump recommends using a safety relief device inconjunction with this unloader valve when installed on a positive displacement pump. General Pump is not liable and assumes no responsibility for this valve when used in a customer's high pressure system

PARTS LIST

Item	Part No.	Description	Qty.
1	Y60070731	Fitting, Bypass, 3/8" NPT-F	1
2	Y10307002	O-Ring, .738 ID x .070 CS	2
3	Y60025451	Seat, 8.5 x 14	1
4	Y10305901	O-Ring, .437 ID x .070 CS	1
5	Y70070921	Housing, M6	1
6	Y60070235	Body, Valve	1
7	Y10402400	Back-up Ring, .456 x .275	1
8	Y10316900	O-Ring, .237 ID x .103 CS	2
9	Y10306801	O-Ring, .675 ID x .070 CS	1
10	Y60070831	Fitting, Piston Retainer	1
11	Y16210000	Screw, Set, M4 x 4	1
12	Y60101831	Nut, M18 x 1	1
13	Y60070451	Piston Rod	1
14	Y10402300	Back-up Ring, .433 x .252	1
15	Y60031584	Knob, Adjustment	1
16	Y60030431	Cap, Spring	1
17	Y60031361	Spring, White	1
18	Y60031061	Support, Spring	1
19	Y10321300	O-Ring, .236 ID x .118 CS	1
20	Y60005231	Check Valve	1
21	Y60005351	Spring, .027 x .453	1
22	Y60005831	Outlet Fitting, 3/8" NPT-F	1



General Pump is
a member of the
Interpump Group.

