

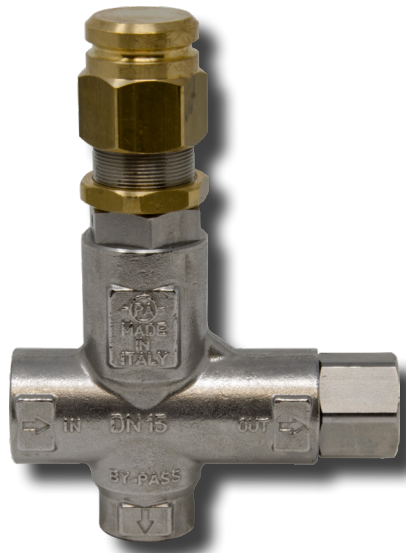
FLOW SENSITIVE

FLOW SENSITIVE

**GENERAL PUMP** *A member of the Interpump Group*

**YU5821**

**Stainless Steel Trapped Pressure Unloader Valve**

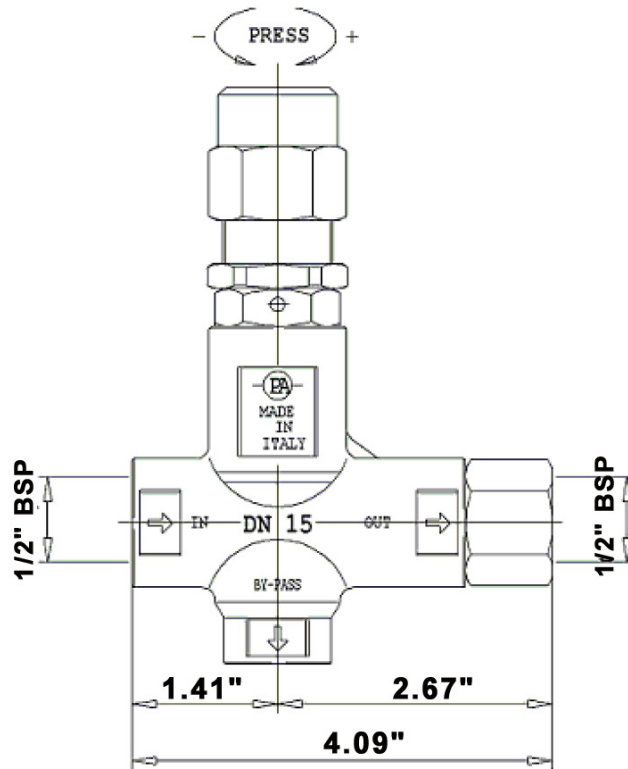
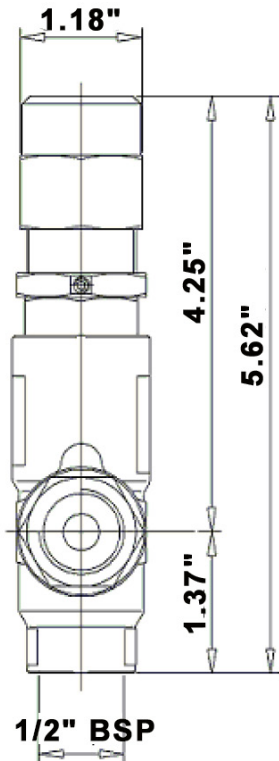


**SPECIFICATIONS**

Part Number	YU5821
Max Volume	21 GPM
Max Discharge Pressure	5800 PSI
Max Temp	194° F
Inlet Port Sizes	1/2" BSP-F
Dimensions	6.2" x 4.1" x 1.2"
Weight	2.3 lbs
Materials	Stainless Steel, Brass, Buna-N

*General Pump recommends using a safety relief device in conjunction with this unloader valve when installed on a positive displacement pump. General Pump is not liable and assumes no responsibility when used in a customer's high pressure system.*

**DIMENSIONS**



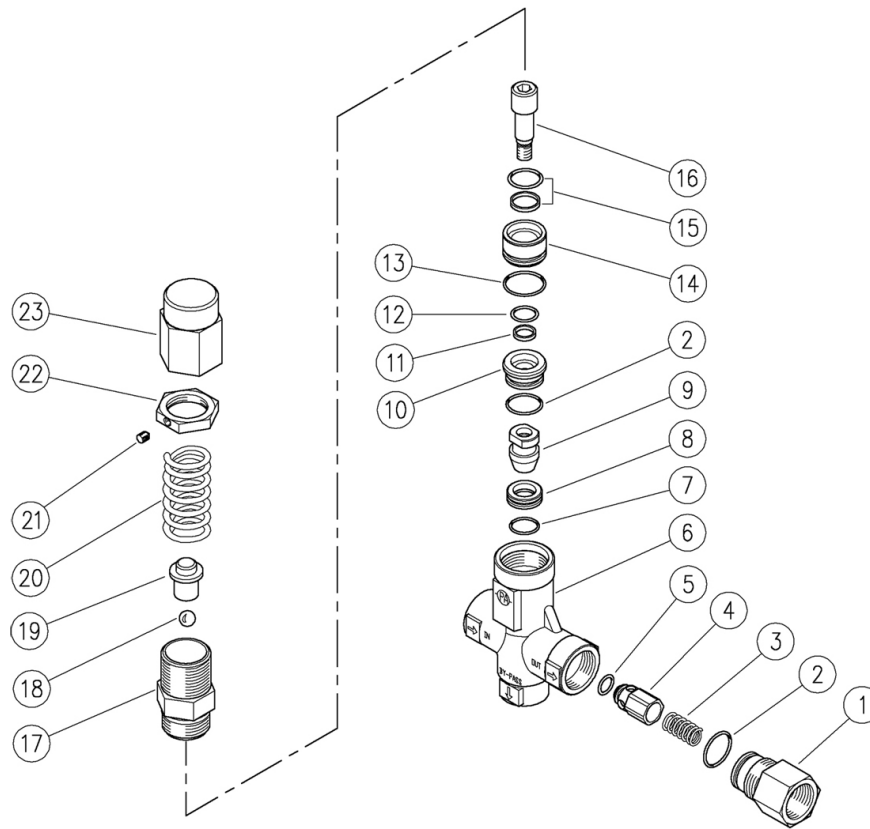
General Pump is a member of the Interpump Group

Ref 301027 Rev. A  
08-19



**Stainless Steel Trapped Pressure Unloader Valve**

**PARTS LIST**



No.	Part No.	Description	Qty.
1	Y60140451	Coupling, 1/2" BSP	1
2*	Y10306801	O-ring, 1.78x17.7	2
3	Y60140360	Spring, .8x10.7x23	1
4	Y60140251	Shutter pin, SST	1
5*	Y10323001	O-ring, 3.53x7.52	1
6	Y60140155	Body, SST	1
7*	Y10306601	O-ring, 1.78x15.6	1
8*	Y60180951	Seat, 11.6x19x6, SST	1
9*	Y60180851	Shutter pin, M8, SST	1
10	Y60141051	Spacer ring, 10x23.4x10.5, SST	1
11*	Y10402200	Back-up ring, 10x12x2	1
12*	Y10305910	O-ring, 1.78x11.11	

No.	Part No.	Description	Qty.
13*	Y10307201	O-ring, 1.78x20.35	1
14	Y60140951	Spacer ring, 10.3x23.5x17.5, SST	1
15*	Y10202900	Stem seal, 14x19x2.2 +o-ring	1
16	Y60141151	Piston, M8, SST	1
17*	Y60140651	Piston holder, SST	1
18	Y14744310	Ball, 11/32, SST	1
19	Y60140531	Spring pin, Brass	1
20	Y60540261	Spring, 5.4x22x64.5	1
21	Y16210000	Set screw, M4x4	1
22	Y60172831	Ring nut, M27x1, Brass	1
23	Y60540531	Valve regulating ring nut, M27x1, Brass	1
*	Y60145224	Repair Kit	

**APPLICATION**

This product is to be used with clean, fresh water. For different or corrosive liquids, contact GP Companies Inc. technical support department. With not clean liquids, appropriate filtration should be installed. Select the valve based on the nominal operating rating: system rated pressure, max flow and max temperature. Under no circumstances should the pressure of the system exceed the maximum rated pressure of any component. When installed on hot water cleaners, this valve is to be installed before the boiler.

**Stainless Steel Trapped Pressure Unloader Valve****INSTALLATION**

On a system that produces hot water, consider installing safety devices which limit the accidental increase of the fluid temperature. Always install a safety valve to protect the operator and system. Choose a correct nozzle size, able to discharge regularly, on bypass, at least 5% of the total flow of the system, in order to achieve a constant pressure, and avoid troublesome pressure spikes. When the nozzle wears, the pressure drops. After installing a new nozzle, re-adjust the system to the original pressure setting.

**MAINTENANCE**

**STANDARD:** every 400 working hours, check and lubricate the seals with water resistant grease.

**SPECIAL:** every 800 working hours, check the wear of the seals and internal parts and, if necessary, replace with original GP parts taking care, during installation, to lubricate with water resistant grease.

**The manufacturer is not to be considered responsible for damage as a result from incorrect fitting and maintenance.**

**TROUBLESHOOTING**

<b>PROBLEMS</b>	<b>PROBABLE CAUSES</b>	<b>SOLUTIONS</b>
Frequent valve recycles	Damaged check valve O-ring Leaking connections Restricted bypass or too small diameter of the bypass hose	Replace Check or renew Clean or adapt passage diameter
Valve does not reach pressure	Piston O-rings worn out Debris between seat and shutter Seat worn out Nozzle worn out Incorrect choice of nozzle	Replace Clean the seat Replace Replace Fit with smaller nozzle
High pressure peaks at gun closure	There is not a minimum of 5% of total flow discharged in bypass Excessive flow in bypass Adjustment with spring totally compressed	Reset Correctly  Change type of valve or adjust passages Loosen adjustment screw and eventually fit with smaller nozzle
Valve does not discharge at low pressure at gun closure	Jammed check valve Debris on check valve	Clean or replace Clean