

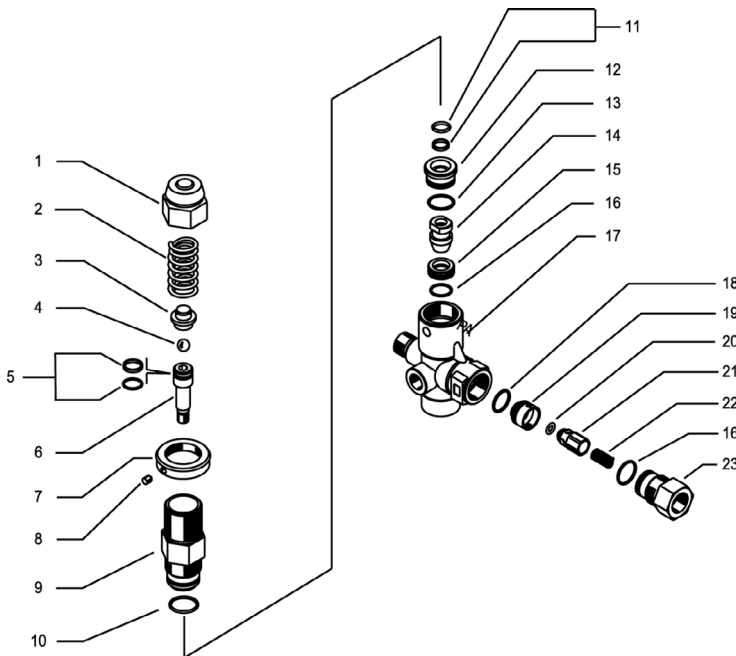
**SPECIFICATIONS**

<b>Part Number</b>	<b>YU5075KS</b>	
Operating Pressure	5,100 PSI	
Max Pressure	5,650 PSI	
Max Flow	10.5 GPM	
Temperature	195° F	
Port Size:	Inlet	3/8" BSP-M
	Discharge	3/8" BSP-F
	Bypass	1/2" BSP-F
Dimensions	3.6" x 1.4" x 5.3"	
Weight	2.0 lbs.	
Materials	Brass, Stainless Steel, Buna-N	

**FEATURES**

- Premium pressure compensated unloader for low spike pressures.
- Adjustable maximum pressure settings
- Stainless Steel internal components for maximum durability

**PARTS LIST**



No.	Part No.	Description	Qty.
1	Y60172731	Cap, Brass	1
2	Y60181261	Spring, Ø4.4 x 15.8 x 47	1
3	Y60181331	Spring Guide	1
4	Y14744310	Ball, 11/32", SST	1
5	Y60097824	Piston Seal, Upper Assy.	1
6	Y60180651	Piston, SST	1
7	Y60172831	Nut, M27 x 1	1
8	Y16210000	Screw, M4 x 4	1
9	Y60180531	Piston Housing	1
10	Y10307201	O-ring, 1.78 x 20.35	1
11	Y60097924	Piston Seal, Lower Assy.	1
12	Y60181031	Spacer	1
13	Y10306801	O-ring, 1.78 x 17.17	1
14	Y60180851	Shutter, SST, M8	1
15	Y60180951	Seat, SST	1
16	Y10306601	O-ring, 1.78 x 15.6	2
17	Y60180135	Valve Body	1
18	Y10306400	O-ring, 1.78 x 14	1
19	Y60180751	Check Valve Seat, SST	1
20	Y10321308	O-ring, 3 x 6	1
21	Y60005251	Hex Check Valve, SST	1
22	Y60005351	Spring	1
23	Y60181131	Outlet Fitting, 3/8" BSP-F	1
*	Y60181824	Repair Kit	

