

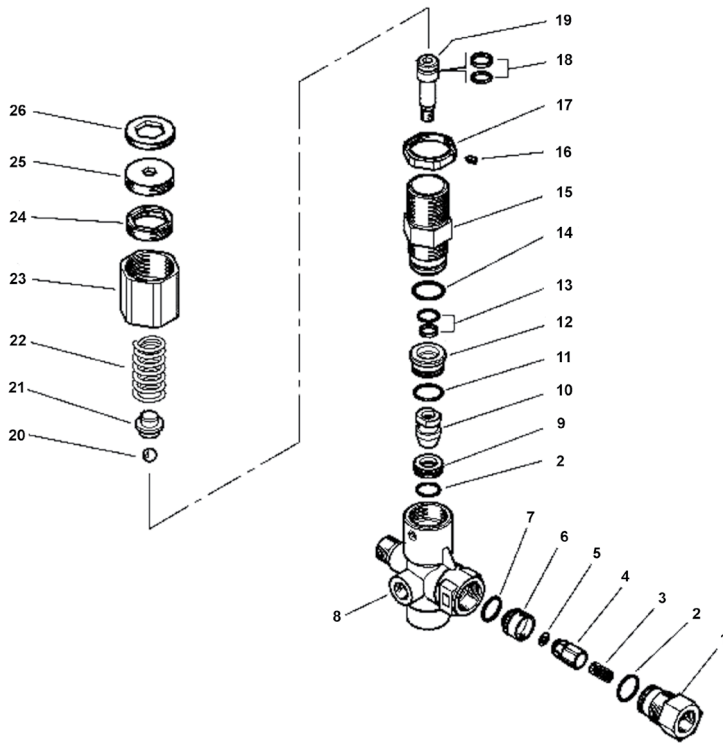
SPECIFICATIONS

Part Number	YU5075KMM	
Operating Pressure	5,100 PSI	
Max Pressure	5,650 PSI	
Max Flow	10.5 GPM	
Temperature	195° F	
Port Size:	Inlet	3/8" BSP-M
	Discharge	3/8" BSP-F
	Bypass	1/2" BSP-F
	Guage	1/4" BSP-F
Dimensions	3.6" x 1.4" x5.3"	
Weight	2.0 lbs.	
Materials	Brass, Stainless Steel, Buna-N	

FEATURES

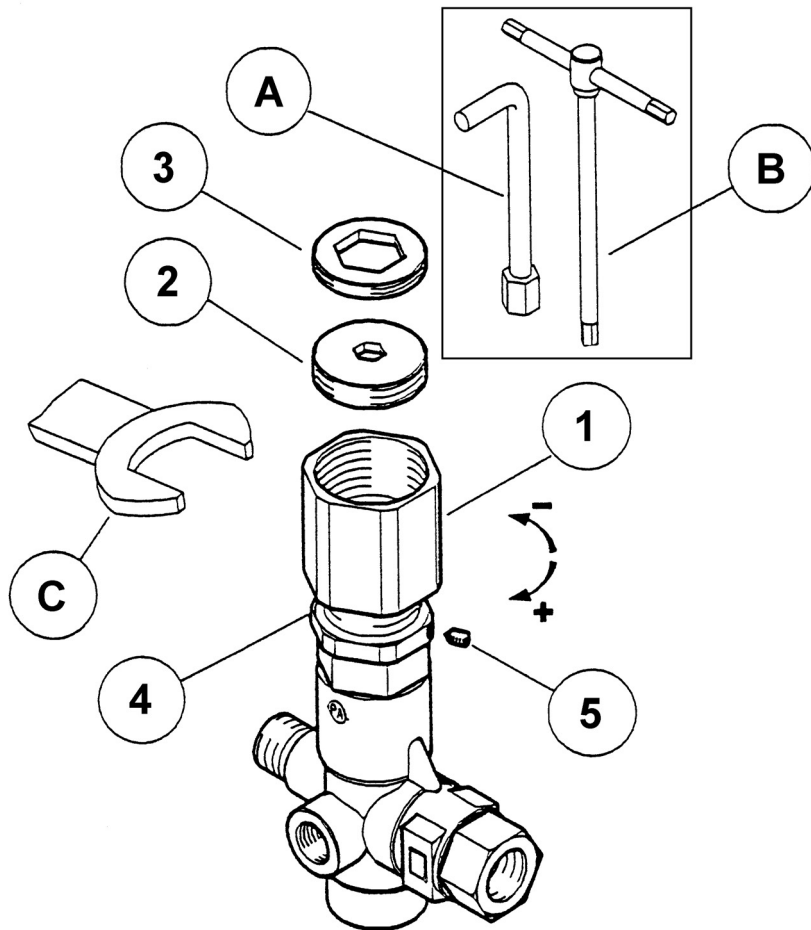
- Premium pressure compensated unloader for low spike pressures.
- Adjustable maximum pressure settings
- Stainless Steel internal components for maximum durability

PARTS LIST



No.	Part No.	Description	Qty.
1	Y60181131	Coupler, 3/8 BSP-F	1
2*	Y10306601	O-ring, 1.78 x 15.6 mm	2
3	Y60005351	Spring	1
4	Y60005251	Check Valve, SS	1
5*	Y10321308	O-ring, 3 x 6 mm	1
6	Y60180751	Seat	1
7*	Y10306401	O-ring, 1.78 x 14 mm	1
8	Y60180135	Brass Body	1
9*	Y60180951	Seat	1
10*	Y60180851	Shutter, M8	1
11*	Y10306801	O-ring, 1.78 x 17.17 mm	1
12	Y60181031	Spacer	1
13*	Y60097924	Piston Valve Seal Kit	1
14*	Y10307201	O-ring, 1.78 x 20.35 mm	1
15	Y60180531	Piston Housing	1
16	Y16210000	Dowel, M4 x 4 mm	1
17	Y60181431	Lock Ring, M27	1
18*	Y60097824	Piston Seal Kit	1
19	Y60180651	Piston, M8	1
20*	Y14744310	Ball, 11/32", SS	1
21	Y60181331	Spring Guide	1
22	Y60181261	Spring, 4.5 x 47 mm	1
23	Y60180431	Cap	1
24	Y60180331	Lock Nut	1
25	Y60181531	Lower Set Nut	1
26	Y60181631	Upper Set Nut	1
*	Y60181824	Repair Kit	

ADJUSTING PROCEDURE



1. Turn knob (ref. 1) counterclockwise to upper limit (spring relaxed).
2. Hold knob 1 with wrench (ref. C, 36 mm) and adjust internal nut (ref. 2) clockwise with a wrench (ref. B, 8 mm) to set the MINIMUM PRESSURE required. Move jam nut (ref. 2) with a wrench (ref. A, 18 mm) and tighten nut (ref. 2) counterclockwise to lock the MINIMUM PRESSURE position.
3. Turn knob (ref. 1) clockwise until the required MAXIMUM PRESSURE is set by moving nut (ref. 4) close to knob (1) and lock it with set screw (ref. 5). Warning: The MAXIMUM PRESSURE must not exceed 5100 psi while making sure that at least 5% of the flow rate is discharged to bypass.

Apply a paint drop on nut (ref. 5) to show loosening or tampering

DIMENSIONS

