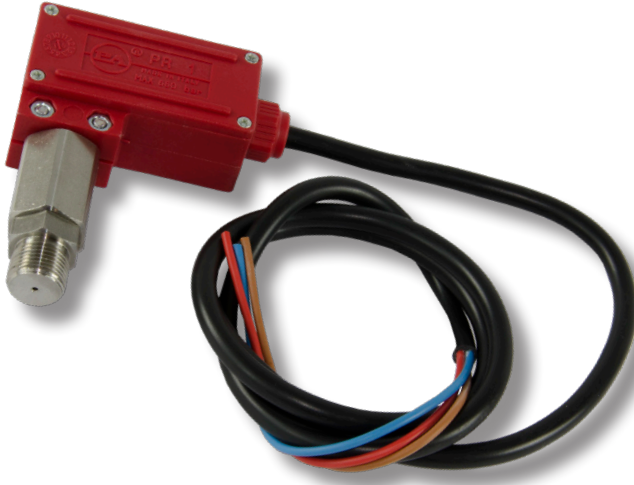


YPRSWITCHHPL

Flow Switch



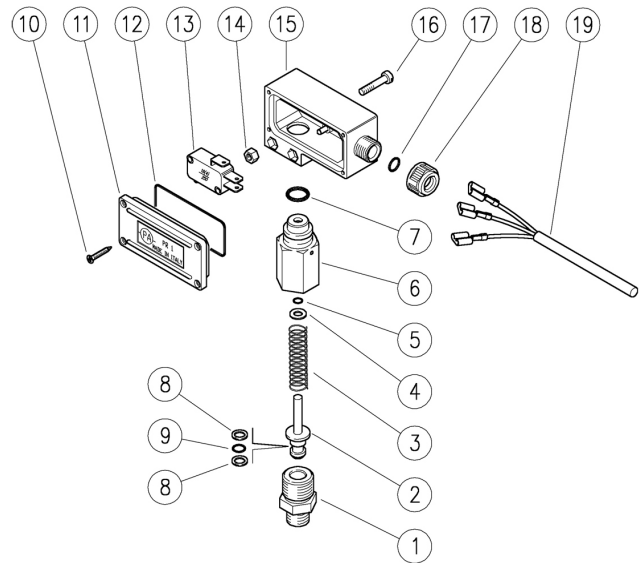
SPECIFICATIONS

Part Number YPRSWITCHHPL
 Rated Pressure 9570 PSI
 Maximum Voltage..... 250 Volts
 Maximum Amps..... 16 Amp*
**non inductive loads*
 Maximum Temperature 194° F
 Threads 3/8" BSP-M
 Dimensions..... 3.57" x 3.78" x 1.26", w/ 49" Cord
 Weight 0.62 lbs.
 Material..... Stainless Steel

**May not be used for starting motors, will not handle start-up current.*

PARTS LIST

Item	Part #	Description	Qty.
1	Y29001151	Nipple, M18x1.5-3/8M Bsp Sst.	1
2	Y29000251	Piston, PRI Sst.	1
3	Y29001651	Spring, 2x9x22 mm Sst.	1
	Y29001551	Spring, 1.8x22 mm brass (1)	1
4	Y14356400	Washer, 5.3x9.5x1 mm brass	1
5*	701009	O-ring, 1.78x5.28 mm	1
6	Y29000151	Housing-PR1, Sst	1
7	70112	O-ring, 2.62x12.37 mm	1
8*	Y10400601	Back-up ring, opn. 6.2x9x1.2 mm	2
9*	Y10305100	O-ring, 1.78x6.07 mm Vi 70	1
10	Y16302000	S/tapp. screw, 2.5x12 mm chrom	4
11	Y29000484	Lid, PR1 PA red	1
12	Y10310800	O-ring, 2x48 mm	1
13	Y12500100	Microswitch, 16A 250V	1
14	Y11451305	Hex. nut M4	2
15	Y29000384	Casing, PR1 PA red	1
16	Y16184300	Screw, DIN7985 M4x20 mm z.pl.	2
17	Y10310992	O-ring, 2.4x7.3 mm	1
18	Y29008284	Locknut for cable gland, PA black	1
	Y29010984	Locknut for cable gland, PA red (1)	1
19	Y12500000	Cable, 3x1 L. 1200 mm	1
*	Y29002624	Repair Kit-PR16 1x3 pcs	



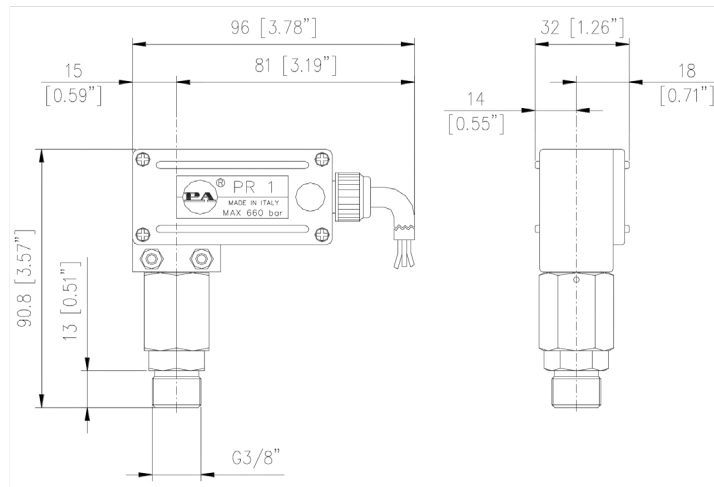
General Pump is a member of the Interpump Group



Ref 310099 Rev. C
11-21



DIMENSIONAL DRAWING

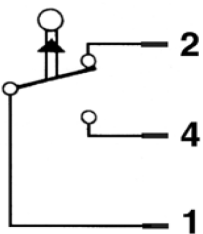


INSTALLATION

Choose the appropriate switch for the rated pressure system and for the on/off operations. Check that the value of the required current is under the maximum rated value. In any case, the pressure of the pump should not exceed the maximum pressure rate imprinted on the pressure switch. When installed on pumps that produce hot water, the pressure switch has to be fitted in front of the heat source.

ELECTRICAL

Electrical installation must be carried out by a qualified person.
Always assure that the pressure switch is properly grounded.



Wiring Diagram

1) Red - 2) Blue - 4) Brown

Electrical Connection

N.O. Red + Brown - Normally open
N.C. Red + Blue - Normally Closed

PROBLEMS & SOLUTIONS

PROBLEMS	PROBABLE CAUSES	SOLUTIONS
Pressure switch does not function	Electric connection faulty or loose.....	Check and/or replace
	Rupture of microlever	Replace microswitch
	Rupture in piston spring	Replace
	Rupture of microcontacts.....	Replace microswitch
	Jammed piston	Check and/or replace
Fluid in the casing	Damaged piston seals.....	Check and/or replace
	Damaged nut seal	Check and/or replace