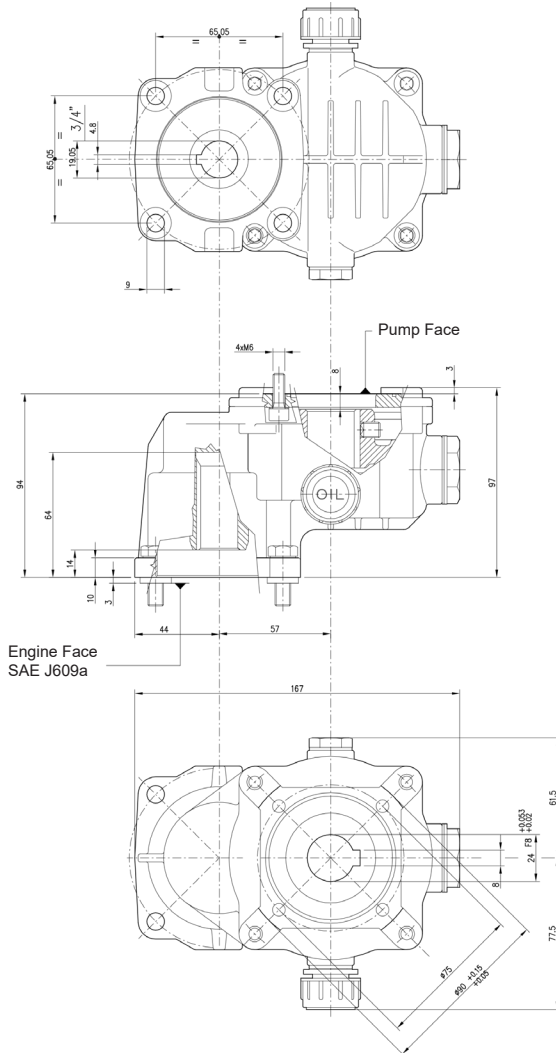


SPECIFICATIONS

Part Number	YGR0750
Maximum Speed	3400 RPM
Engine Shaft Diameter	0.75"
Maximum Horsepower	6.5 EBHP
Gear Ratio	2.3:1
Weight	4.4 lbs.
Flange - SAE	J609a
Pump Shaft	24 mm
Oil Capacity	4.5 oz.
Oil	SAE 90

DIMENSIONS



FEATURES

- Compact design with easy-mount, universal flange for quick and direct coupling to a wide range of engines.
- Oil bath lubrication combined with premium quality, hardened steel helical gears for quiet operation and extended life
- Oversized bearing system is self-aligning. Reduces load on motor bearings and pump bearings.
- Reversible mounting for right or left hand drive gas engines. includes reversible dipstick and oil level sight glass.

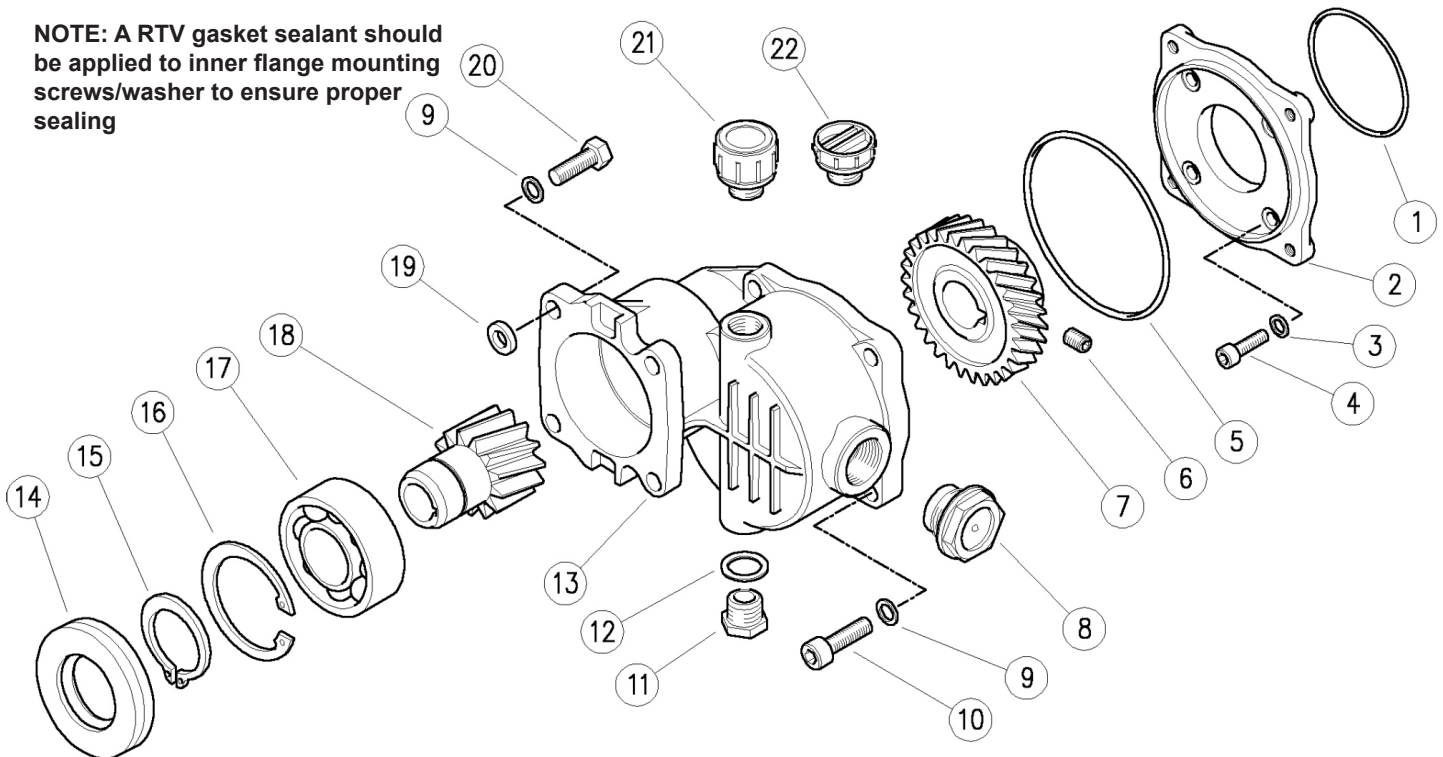
YGR0750

GENERAL PUMP *A member of the Interpump Group*

Gear Reducer

PARTS LIST

NOTE: A RTV gasket sealant should be applied to inner flange mounting screws/washer to ensure proper sealing



NO.	PART #	DESCRIPTION	QTY.	NO.	PART #	DESCRIPTION	QTY.
1.	Y10308163	O-ring, 1.78x63.22 mm	1	12.	Y14404200	Washer, 16,7x22x1,5 mm	1
2.	Y50060244	Gearbox flange, alum.	1	13.	Y50060144	Crankcase	1
3.	Y14409800	Sealing washer, d.6 mm	4	14.	Y10203662	Spacer, 30 mm	1
4.	Y16189518	Screw, M6 x 18 mm	4	15.	Y10101500	Snap ring, E 30	1
5.	Y10321088	O-ring, 262x88.57 mm	1	16.	Y10106200	Snap ring, I 62 mm	1
6.	Y16222300	Set screw, M8x10 mm	1	17.	Y11443062	Bearing, 30x62x16 mm	1
7.	Y50060365	Ring gear, Z.30 d.24mm	1	18.	Y50060461	Pinion, Z, 13	1
8.	Y15373400	Oil plug 3/4"	1	19.	Y50060541	Washer, 8,3x16x3 mm	4
9.	Y14365200	Washer, safety, 8.4 mm	8	20.	Y16200900	Screw, DIN933 5/16"UNFx1"	4
10.	Y16195826	Screw, M8x25 mm	4	21.	Y15372600	Oil plug 3/8" Bsp+seal	1
11.	Y60002831	Plug, 3/8 BSP	1	22.	Y15372500	Shipping cap	1

Ref 300177 Rev. B
05-22

GENERAL PUMP 1174 Northland Drive • Mendota Heights, MN 55120
Phone: 651.686.2199 • Fax: 800.535.1745 • e-mail: sales@gpcompanies.com • www.generalpump.com

