



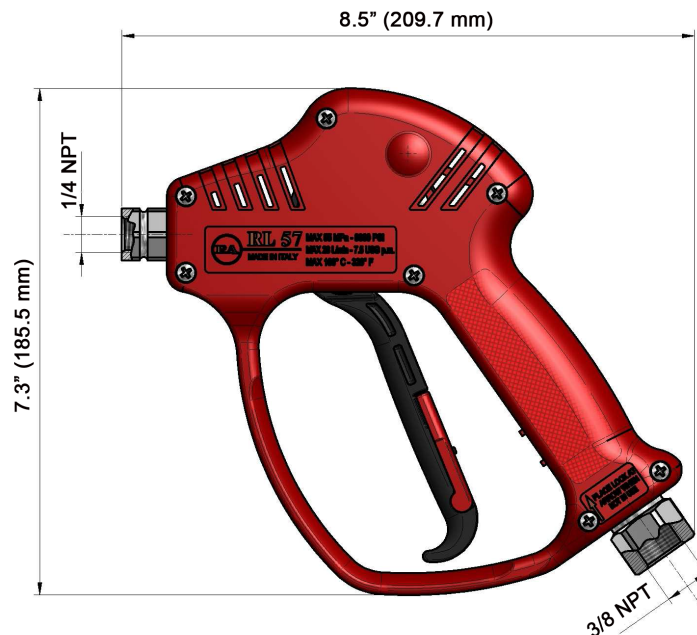
### FEATURES

- Shockproof plastic housing
- Ergonomic design
- 303 Stainless Steel
- Minimizes fatigue for the operator

### SPECIFICATIONS

<b>Part Number</b>	<b>YG7207</b>
Maximum Volume	7.5 GPM
Rated Discharge Pressure	7,250 PSI
Maximum Discharge Pressure	7,900 PSI
Maximum Fluid Temperature	320° F
Inlet Port Thread	3/8" NPT-F
Discharge Port Thread	1/4" NPT-F
Weight	1.6 lbs
Dimensions	8.5" x 7.3" x 1.2"
Materials	Stainless Steel, Brass, Plastic, Viton

### DIMENSIONS



Ref 310055 Rev. C  
07-21



General Pump  
is a member of  
the Interpump Group



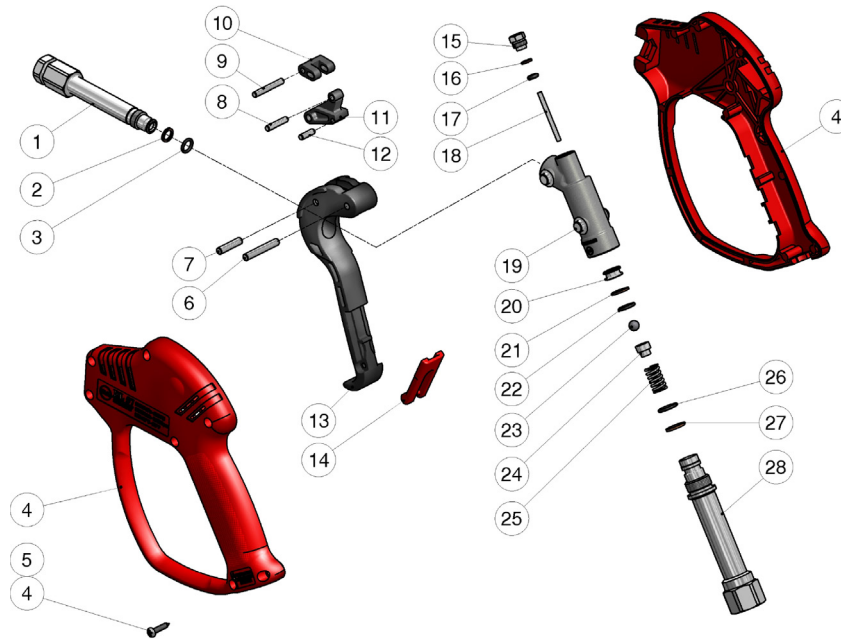
# YG7207

## Rear Entry Spray Gun

**GENERAL PUMP**

A member of the Interpump Group

### PARTS LIST



No.	Part No.	Description	Qty.
1*	Y30471251	Front Tube, SST	1
2*	Y10402600	Back-up Ring, 7.7x10.5x1.2	1
3	Y10305510	O-ring, 1.78x7.66, Viton	1
4	Y30471124	Casing, Kit, + SST Screws	1
5	Y16307551	Self-tapping Screw, 3.8x18, SST	7
6	Y30411451	Parallel Pin, 5x33, SST	1
7	Y30412151	Parallel Pin, 5x22, SST	1
8	Y30411251	Parallel Pin, 4x20, SST	1
9	Y30411351	Parallel Pin, 4x29, SST	1
10	Y30410484	Connecting Rod	1
11	Y30412484	Connecting Rod	1
12	Y30412251	Parallel Pin, 4x13, SST	1
13	Y30412784	Trigger, Black	1
14	Y30151084	Safety Latch, Red	1

No.	Part No.	Description	Qty.
15	Y30470751	Front, Plug M10x1, SST	1
16*	Y10401800	Back-up Ring, 3.2x7.5x1.2	1
17*	Y10316500	O-ring, 2.62x2.84, Viton	1
18*	Y30410951	Piston, 3x37.6, SST	1
19	Y30470555	Sousing, SST	1
20*	Y30470851	Seat, 4.8, SST	1
21*	Y10402700	Back-up Ring, 10.2x13x1.2	1
22*	Y10305710	O-ring, 1.78x9.25, Viton	1
23*	Y14743078	Ball, 9/32	1
24	Y30470451	Ball Holding Piston, SST	1
25	Y30410851	Spring, 1.6x8.8x24, SST	1
26*	Y10305810	O-ring, 1.78x10.82, Viton	1
27*	Y10409000	Back-up Ring, 11.2x14x1.5	1
28	Y30470951	Inlet Housing, 3/8 NPT-F, SST	1
*	Y30471324	Repair Kit (YG7207)	

### INSTRUCTIONS

This product is to be used with clean, fresh water. For use involving different or corrosive liquids, contact your GP's customer service department. Appropriate filtration should be installed when using unclean liquids. Choose the gun that most closely matches the rated pressure, max flow and max temperature of the pressure wash system. In any case, the pressure of the machine should not exceed the permissible pressure rate imprinted on the gun.

### INSTALLATION

This gun was designed to operate with hot water (in compliance with the technical specs), making sure not to exceed the max temperature. Always fit a safety valve to protect the system when the latter is under pressure. Choose a suitable nozzle and adjust the valve mounted in the front of the gun, thus obtaining a constant supply and avoiding unwanted pressure spikes. If the nozzle wears out, the pressure falls. When you install a new nozzle, adjust the system back to the original pressure.

### OPERATION

The gun opens and closes a high pressure conduct by means of a piston acting on a seat; the return is controlled by a spring which releases the trigger. Attention: during pump activation ALWAYS set the gun with its safety latch connected in order to prevent accidental openings.