



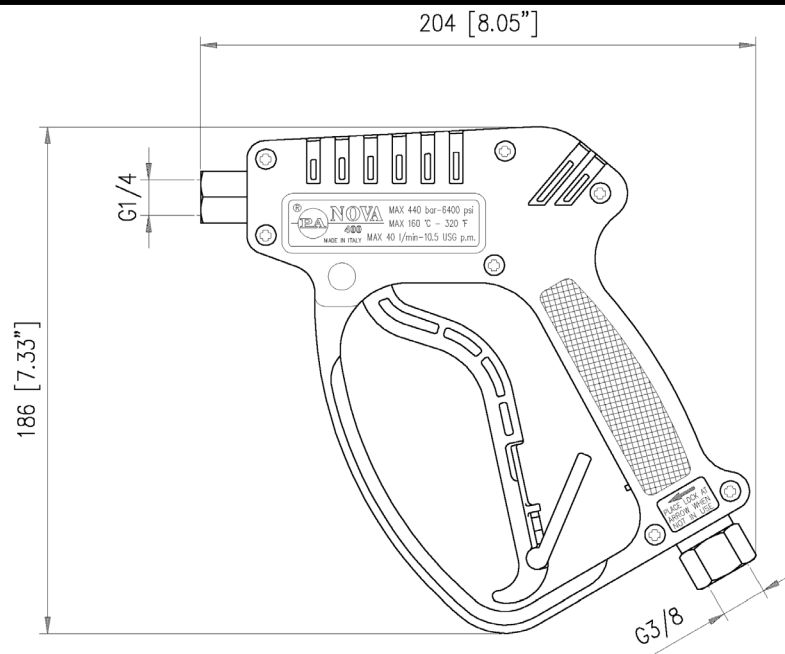
### FEATURES

- Shockproof plastic housing
- Totally built in Stainless Steel AISI303
- Seat and shutter in Stainless Steel
- Minimizes fatigue for the operator

### SPECIFICATIONS

<b>Part Number</b>	<b>YG5200</b>
Max Volume	10.5 GPM
Rated Discharge Pressure	5,800 PSI
Max Discharge Pressure	6,400 PSI
Max Fluid Temperature	320° F
Inlet Port Thread	3/8" NPT-F
Discharge Port Thread	1/4" NPT-F
Weight	2.0 lbs
Dimensions	8" x 7.3" 1.3"
Materials	Stainless Steel, Brass, Plastic, Buna-N, Teflon

### DIMENSIONS



General Pump is a member of the Interpump Group

Ref 300435 Rev. G  
04-20



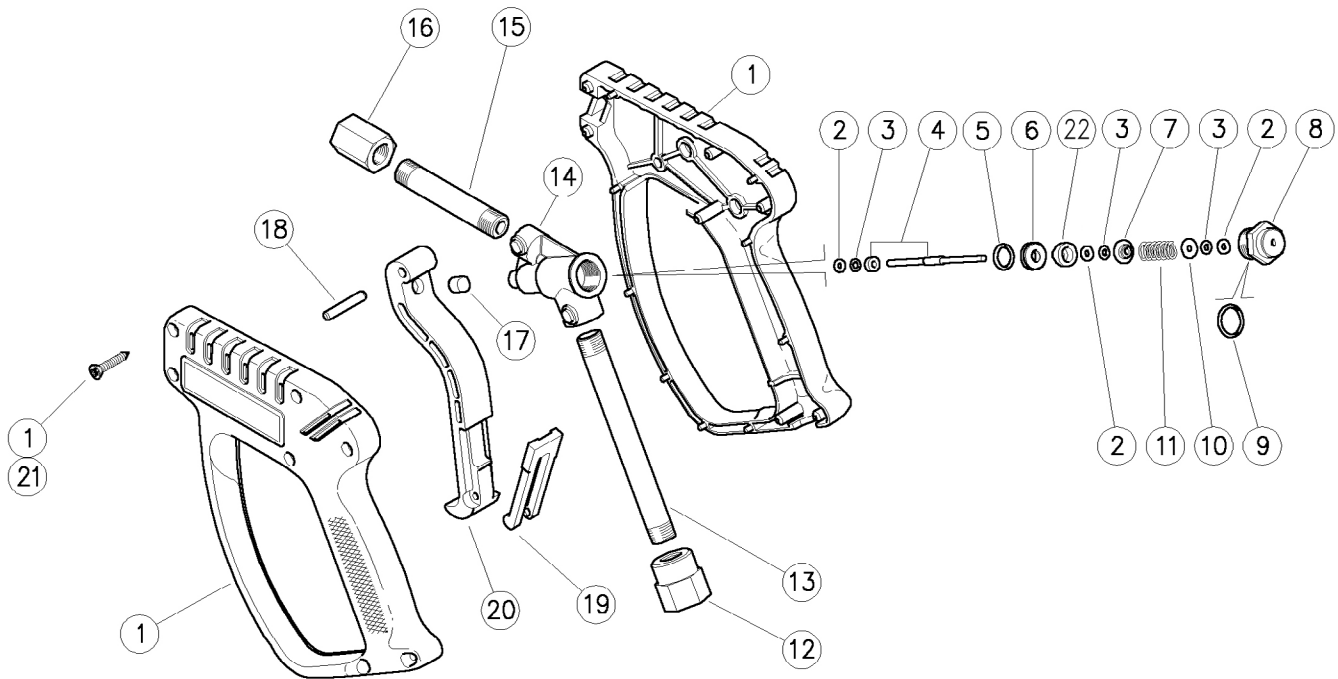
# YG5200

## Rear Entry Spray Gun

**GENERAL PUMP**

A member of the Interpump Group

### PARTS LIST



No.	Part No.	Description	Qty.
1	Y30552124	Housing Kit	1
2	Y10401800	Back-up Ring, 3.2x7.5x1.2 mm	3
3	Y10316500	O-ring, 2.62x2.84 mm, Viton	3
4	Y30565921	Piston + Bushing	1
5	Y10305901	O-ring, 1.78x11.11 mm	1
6	Y30551651	Seat, 6.0x13.9 mm	1
7	Y30550251	Spring Washer, SST	1
8	Y30565151	Plug, M16x1, SST	1
9	Y10306401	O-ring, 1.78x14 mm	1
10	Y30550751	Washer, 3.3x10x0.5 mm, SST	1
11	Y30550851	Spring, 1.6x10x22 mm, SST	1

No.	Part No.	Description	Qty.
12	Y30315651	Coupler, 1/4"F-3/8" NPT	1
13	Y30315456	Tube, 1/4"	1
14	Y30315255	Housing	1
15	Y30315356	Tube, 1/4"	1
16	Y30203751	Coupling	1
17	Y30067584	Stop Pin, 8x7.1 mm	1
18	Y30251731	Parallel Pin, 5x27.5 mm	1
19	Y30151084	Safety Latch, Red	1
20	Y30250684	Trigger	1
21	Y16307551	ST Screws, 3.5x18 mm, SST	1
22	Y30550161	Piston	7
*	YKITG5200	Repair Kit, YG5200	1

### INSTRUCTIONS

This product is to be used with clean, fresh water. For use involving different or corrosive liquids, contact your GP's customer service department. Appropriate filtration should be installed when using unclean liquids. Choose the gun that most closely matches the rated pressure, max flow and max temperature of the pressure wash system. In any case, the pressure of the machine should not exceed the permissible pressure rate imprinted on the gun.

### INSTALLATION

This gun was designed to operate with hot water (in compliance with the technical specs), making sure not to exceed the max temperature. Always fit a safety valve to protect the system when the latter is under pressure. Choose a suitable nozzle and adjust the valve mounted in the front of the gun, thus obtaining a constant supply and avoiding unwanted pressure spikes. If the nozzle wears out, the pressure falls. When you install a new nozzle, adjust the system back to the original pressure.

### OPERATION

The gun opens and closes a high pressure conduct by means of a piston acting on a seat; the return is controlled by a spring which releases the trigger. Attention: during pump activation ALWAYS set the gun with its safety latch connected in order to prevent accidental openings.