

YG4500S/ST

Straight, Rear Entry Spray Gun



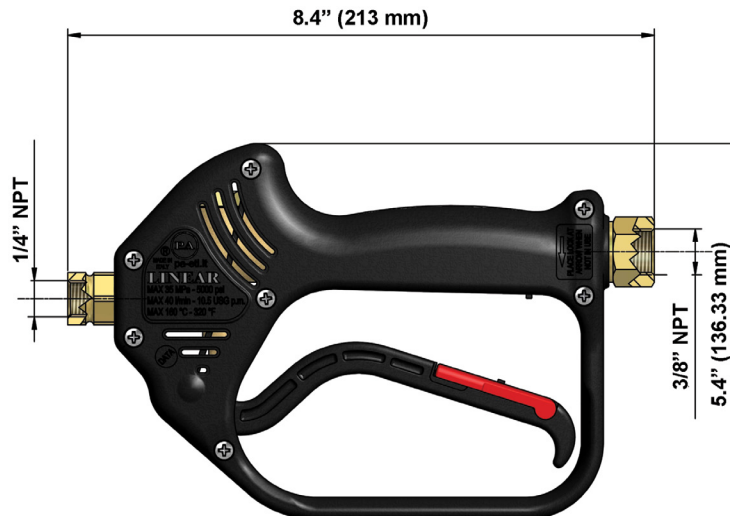
FEATURES

- Shockproof plastic housing
- Ergonomic design
- Stainless Steel seat and ball
- Minimizes fatigue for the operator
- Internal construction of brass and Stainless Steel

SPECIFICATIONS

Part Number	YG4500S / YG4500ST
Maximum Volume	10.5 GPM
Rated Pressure	4500 PSI
Maximum Discharge Pressure	5000 PSI
Maximum Fluid Temperature	320° F
Inlet Port Thread	3/8" NPT-F
Discharge Port Thread	1/4" NPT-F
Weight	1.3 lbs
Dimensions	8.4" x 5.4" x 1.2"
Materials	Stainless Steel, Brass, Plastic, Buna-N, Teflon

DIMENSIONS

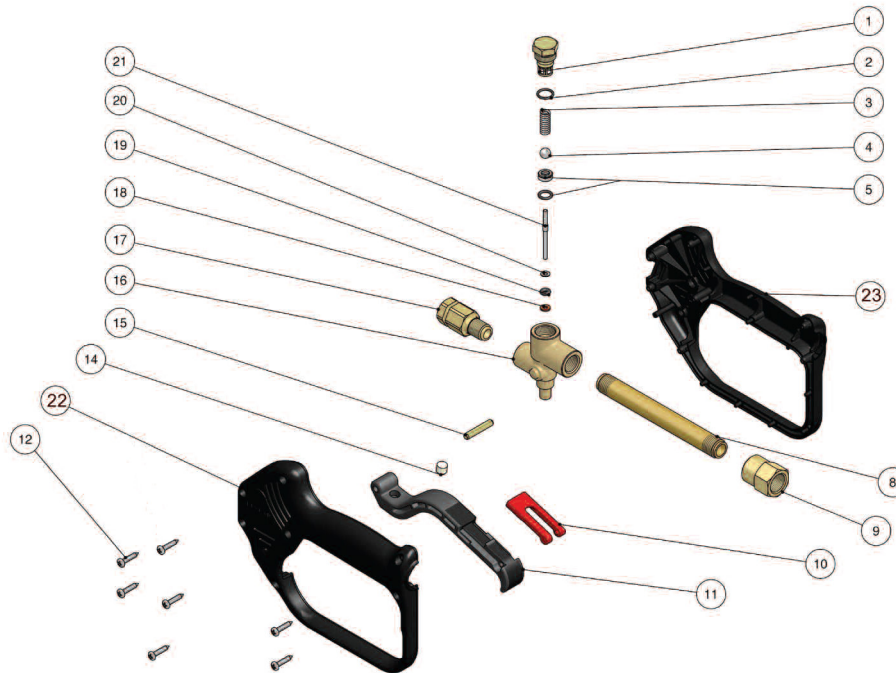


YG4500S/ST

Straight, Rear Entry Spray Gun

GENERAL PUMP A member of the Interpump Group

PARTS LIST



No.	Part No.	Description	Qty.
1.	Y30259531	Spring Plug, M16x1, Brass	1
2.*	Y10302002	O-ring, 1.5x10, Ni 85	1
3.	Y30259651	Spring, 1.5x6.1x24, SST	1
4.*	Y14744800	Ball, 5/16", SST	1
5.*	Y30170820	Seat, 6mm,SST + O-ring, 1.78mm	1
8.	Y30101136	Tube, M15x127, Brass	1
9.	Y30101231	Coupling, 3/8" NPT-F, Brass (YG4500S)	1
	Y30101251	Coupling, 3/8" NPT-F, SST (YG4500ST)	1
10.	Y30151084	Safety Latch, Red	1
11.	Y30250684	Trigger, Black	7
* YKITG5000 Repair Kit, YG4500S			

No.	Part No.	Description	Qty.
12.	Y16307700	Self-tapping Screw, 3.5x18	7
14.	Y30067584	Stop Pin, 8x7.1	1
15.	Y30251731	Parallel Pin, 5x27,5, Brass	1
16.	Y30062535	Housing	1
17.	Y30060731	Tube, 1/4F, NPT	1
18.*	Y10401800	Back-up Ring, 3.2x7.5x1.2	1
19.*	Y10316500	O-ring, 2.62x2.84, Viton	1
20.	Y14351100	Washer, 3.2x7x0.5, SST	1
21.*	Y30251651	Piston, 3mm, SST	1
22.	Y30063584	Gun Body, Left	1
23.	Y30062284	Gun Body, Right	1

INSTRUCTIONS

This product is to be used with clean, fresh water. For use involving different or corrosive liquids, contact your GP's customer service department. Appropriate filtration should be installed when using unclean liquids. Choose the gun that most closely matches the rated pressure, max flow and max temperature of the pressure wash system. In any case, the pressure of the machine should not exceed the permissible pressure rate imprinted on the gun.

INSTALLATION

This gun was designed to operate with hot water (in compliance with the technical specs), making sure not to exceed the max temperature. Always fit a safety valve to protect the system when the latter is under pressure. Choose a suitable nozzle and adjust the valve mounted in the front of the gun, thus obtaining a constant supply and avoiding unwanted pressure spikes. If the nozzle wears out, the pressure falls. When you install a new nozzle, adjust the system back to the original pressure.

OPERATION

The gun opens and closes a high pressure conduct by means of a piston acting on a seat; the return is controlled by a spring which releases the trigger. Attention: during pump activation ALWAYS set the gun with its safety latch connected in order to prevent accidental openings.