

# YG4060SS

*Straight, Rear Entry Spray Gun*



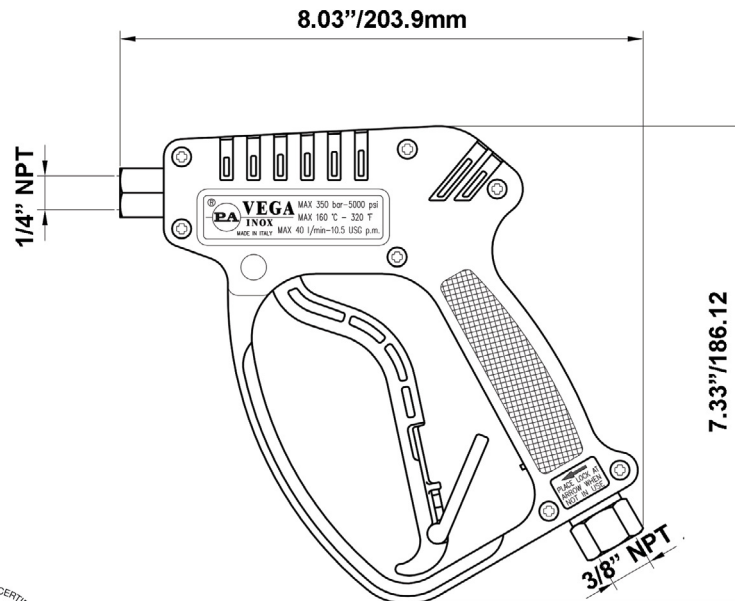
## FEATURES

- Shockproof plastic housing
- Internal construction of brass and Stainless Steel
- Stainless Steel seat and ball
- Ergonomic design
- Minimizes fatigue for the operator

## SPECIFICATIONS

<b>Part Number</b>	<b>YG4060SS</b>
Maximum Volume	10.5 GPM
Maximum Discharge Pressure	5000 PSI
Maximum Fluid Temp	320° F
Inlet Port Thread	3/8" NPT-F
Discharge Port Thread	1/4" NPT-F
Weight	1.7 lbs
Dimensions	8" x 7.3" x 1.3"
Materials	Stainless Steel, Brass, Plastic, Buna-N, Teflon

## DIMENSIONS

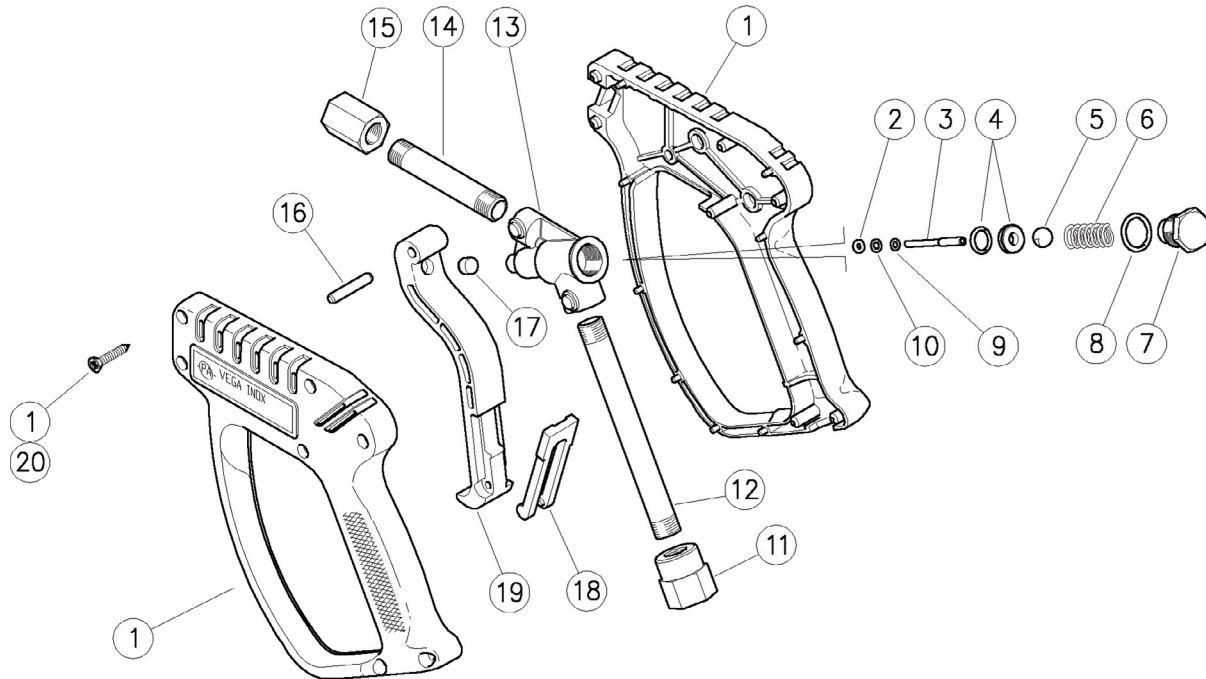


# YG4060SS

## Straight, Rear Entry Spray Gun

**GENERAL PUMP** A member of the Interpump Group

### PARTS LIST



No.	Part No.	Description	Qty.
1	Y30315724	Casing Kit	1
2	Y10401800	Back-up Ring, 32. x 7.5 x 1.2	1
3	Y30251651	Piston, 3 mm, SS	1
4	Y30201420	Seat, 6 mm SST & O-ring, 1.78 mm	1
5	Y14744310	Ball, 11/32" SST	1
6	Y30305451	Spring, 1.6 x 9.7 x 22 mm, SST	1
7	Y30305351	Plug, M16 x 1, SST	1
8	Y10306401	O-ring, 1.78 x 14 mm	1
9	Y14351100	Washer, 3.2 x 7 x .5 mm, SST	1
10	Y10316500	O-ring, 2.62 x 2.84 mm	1
11	Y30315651	Coupling, 3/8" NPT-F	1

No.	Part No.	Description	Qty.
12	Y30315456	Tube, 127 mm, SS	1
13	Y30315255	Housing	1
14	Y30315356	Tube, 70 mm	1
15	Y30203751	Coupling, 1/4" NPT-F	1
16	Y30251731	Parallel Pin, 5 x 27.5 mm, Brass	1
17	Y30067584	Stop Pin, 8 x 7.1 mm	1
18	Y30151084	Safety Latch, Red	1
19	Y30250684	Trigger	1
20	Y16307551	Self-tapping Screw	7
*	YKITG4001	Repair Kit	

### INSTRUCTIONS

This product is to be used with clean, fresh water. For use involving different or corrosive liquids, contact your GP's customer service department. Appropriate filtration should be installed when using unclean liquids. Choose the gun that most closely matches the rated pressure, max flow and max temperature of the pressure wash system. In any case, the pressure of the machine should not exceed the permissible pressure rate imprinted on the gun.

### INSTALLATION

This gun was designed to operate with hot water (in compliance with the technical specs), making sure not to exceed the max temperature. Always fit a safety valve to protect the system when the latter is under pressure. Choose a suitable nozzle and adjust the valve mounted in the front of the gun, thus obtaining a constant supply and avoiding unwanted pressure spikes. If the nozzle wears out, the pressure falls. When you install a new nozzle, adjust the system back to the original pressure.

### OPERATION

The gun opens and closes a high pressure conduct by means of a piston acting on a seat; the return is controlled by a spring which releases the trigger. Attention: during pump activation ALWAYS set the gun with its safety latch connected in order to prevent accidental openings.