



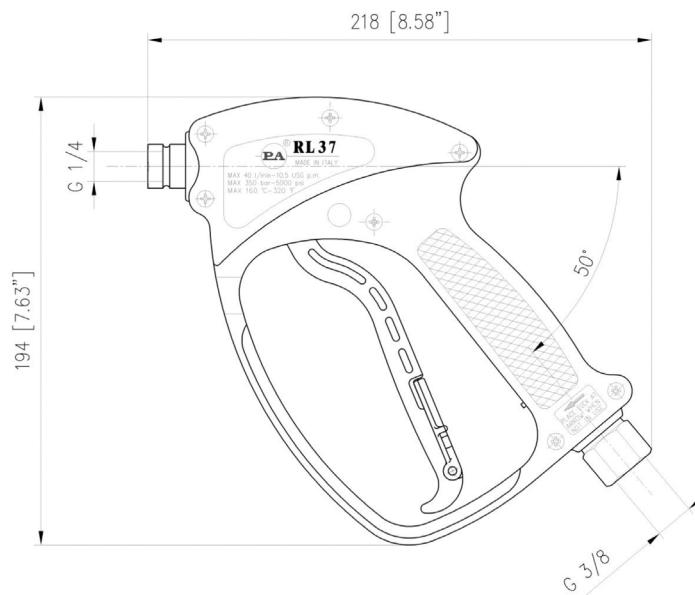
### FEATURES

- Shockproof plastic housing
- Ergonomic Design
- Stainless Steel seat and ball
- Minimizes fatigue for the operator

### SPECIFICATIONS

<b>Part Number</b>	<b>YG4010</b>
Maximum Volume	10.5 GPM
Rated Discharge Pressure	4,500 PSI
Maximum Discharge Pressure	5,000 PSI
Maximum Fluid Temperature	320° F
Inlet Port Thread	3/8" NPT-F
Discharge Port Thread	1/4" NPT-F
Weight	1.2 lbs
Dimensions	8.6" x 7.6"
Materials	Stainless Steel, Brass, Plastic, Buna-N, Teflon

### DIMENSIONS

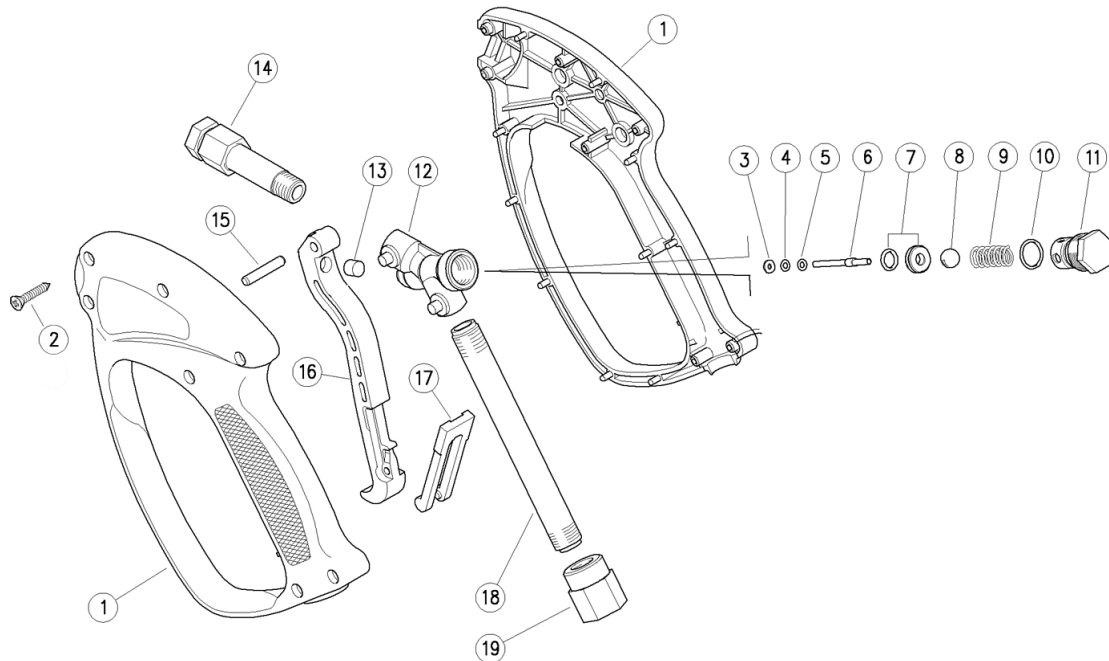


# YG4010

## Rear Entry Spray Gun

**GENERAL PUMP** A member of the Interpump Group

### PARTS LIST



No.	Part No.	Description	Qty.
1.	Y30120724	Casing Kit	1
2.	Y16307700	Self Tapping Screw, 3.5x18 mm	7
3.*	Y10401800	Back-up Ring, 3.2x7.5x1.2 mm	1
4.*	Y10316500	O-ring, 2.62x2.84	1
5.*	Y14351100	Washer, 3.2x7x.5 SST	1
6.*	Y30070451	Piston, 3-4 mm SST	1
7.*	Y30170820	Seat, 6 mm SST & O-ring 1.78 mm	1
8.*	Y14744800	Ball, 5/16" SST	1
9.	Y30259651	Spring, 1.5x1.23 mm SST	1
10.*	Y10302002	O-ring, 1.5x10 mm	1
11.	Y30259531	Spring Plug, M16x1	1
*	Y30120924	Repair Kit, YG4010	

No.	Part No.	Description	Qty.
12.	Y30120535	Housing	1
13.	Y30067584	Stop Pin, 8x7.1 mm	1
14.	Y30200835	Front tube, 1/4" F NPT 72 mm	1
15.	Y30251731	Parallel pin, 5x27.5 mm	1
16.	Y30120484	Trigger	1
17.	Y30151084	Safety latch	1
18.	Y30120366	Tube, 1/4"	1
19.	Y30120831	Coupler, 1/4F BSP-3/8F NPT	1

### INSTRUCTIONS

This product is to be used with clean, fresh water. For use involving different or corrosive liquids, contact your GP's customer service department. Appropriate filtration should be installed when using unclean liquids. Choose the gun that most closely matches the rated pressure, max flow and max temperature of the pressure wash system. In any case, the pressure of the machine should not exceed the permissible pressure rate imprinted on the gun.

### INSTALLATION

This gun was designed to operate with hot water (in compliance with the technical specs), making sure not to exceed the max temperature. Always fit a safety valve to protect the system when the latter is under pressure. Choose a suitable nozzle and adjust the valve mounted in the front of the gun, thus obtaining a constant supply and avoiding unwanted pressure spikes. If the nozzle wears out, the pressure falls. When you install a new nozzle, adjust the system back to the original pressure.

### OPERATION

The gun opens and closes a high pressure conduct by means of a piston acting on a seat; the return is controlled by a spring which releases the trigger. Attention: during pump activation ALWAYS set the gun with its safety latch connected in order to prevent accidental openings.