

GENERAL PUMP *A member of the Interpump Group***YG1635SS****High Volume Low Pressure Washdown Gun****FEATURES**

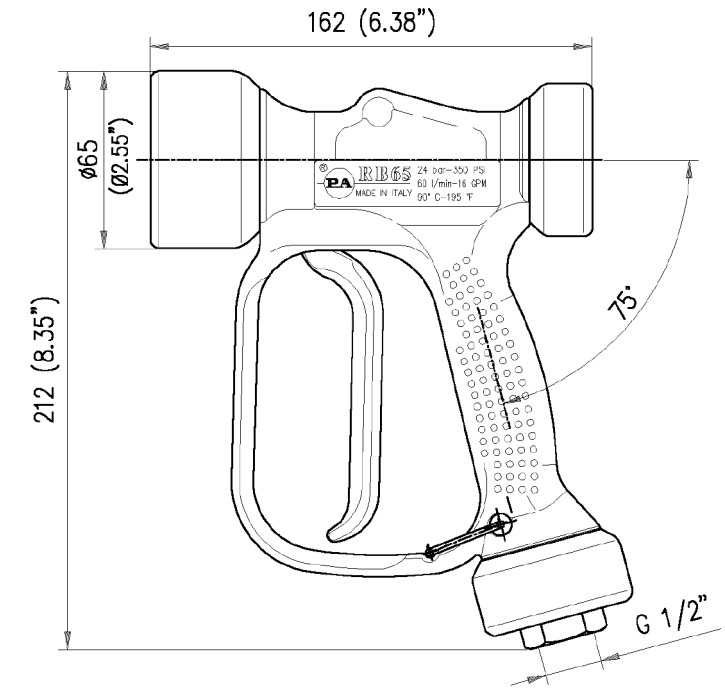
- Stainless Steel internal construction
- Variable nozzle, trigger controlled
- Adjustable fixed spray pattern from 0° - 60°
- Rubber bumpers protect work from damage
- Durable impact resistant molded handle
- Built-in inlet swivel

**SPECIFICATIONS**

Model	YG1635SS
Max Pressure	350 PSI
Max Flow	16 GPM
Max Temperature	195° F
Inlet Port	1/2" BSP-F
Nozzle	Variable 0° - 60°, Built-in
Inlet Swivel	Yes
Weight	2.26 lbs.
Dimensions	8.35" x 6.38"
Materials	Stainless Steel, Viton, Plastic

APPLICATIONS**Washdown Applications in:**

- Food Processing Facilities
- Beverage and Brewing Plants
- Agriculture and Dairy
- Kitchen and Factories
- Fire Suppression

DIMENSIONS

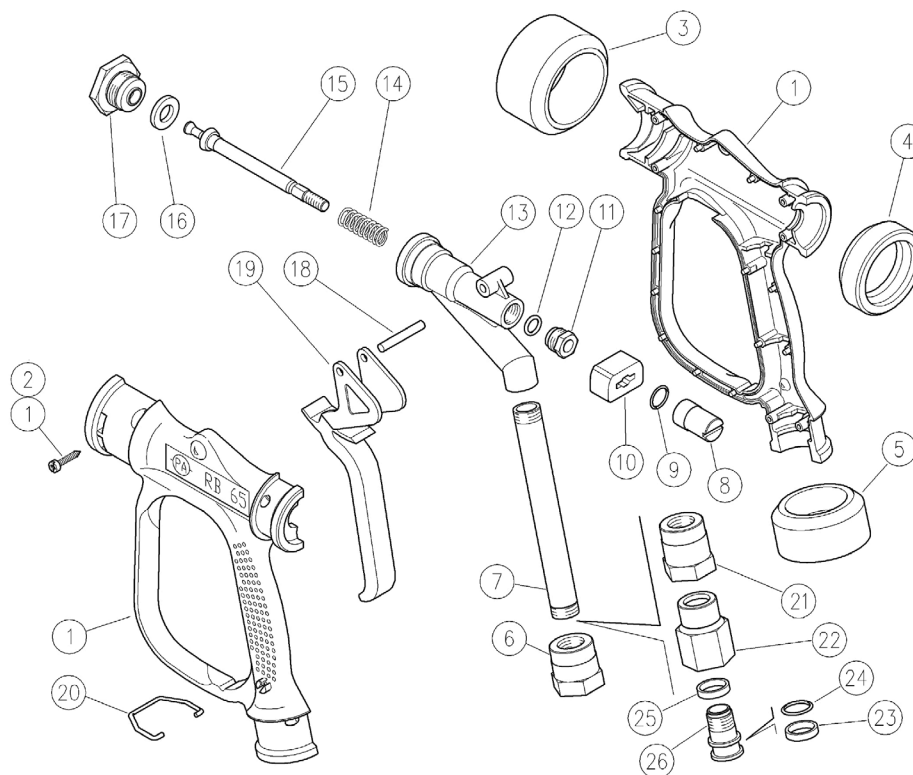
General Pump
is a member of
the Interpump Group



Ref 301031 Rev. C
08-23



PARTS LIST



No.	Part No.	Description	Qty.
1	Y30642024	Housing Kit	1
2	Y16307551	Tapping Screw	6
3	Y30641285	Front Guard Ring	1
4	Y30641385	Back Guard Ring	1
5	Y30641485	Lower Guard Ring	1
6	Y30640760	Coupler, M16x1.5, 1/2 BSP-F, SS	1
7	Y30640960	Tube, M16x1.5, 136 mm, SS	1
8	Y30641831	Regulating Pin	1
9†	Y10309110	O-ring, 2x14 mm, Viton	1
10	Y30630284	Sliding Block	1
11	Y30641760	Plug, M14x1, SS	1
12*†	Y10317010	O-ring, 2.62x7.6 mm, Vi 70	1
13	Y30640560	Housing, SS	1
14†	Y30641060	Spring, 1.8x12, 8x40 mm, SS	1

No.	Part No.	Description	Qty.
15†	Y30640660	Piston, SS	1
16*†	Y30640885	Front Seal, 11x20, 5x3 mm, Viton	1
17	Y30640360	Front Seat, SS	1
18	Y30642831	Pin, 5x38 mm, Brass	1
19	Y30630184	Trigger, Gray	1
20	Y30641551	Trigger Retainer	1
21	Y30642660	Coupler, M15x1F M16x1.5F, SS	1
22	Y30642760	Coupler, 1/2 BSP-F, SS	1
23	Y26107585	Bushing, 15.5x19x4 mm	1
24	Y10309210	O-ring, 2x15 mm, Vi 70	1
25	Y26107485	Bushing, 15.5x19x4	1
26	Y26107260	Pin, M15x1-19 mm SS	1
*	Y30642224	Seals Kit	
†	Y30630624	Repair Kit	

YG1635SS

High Volume Low Pressure Washdown Gun

GENERAL PUMP

A member of the Interpump Group

INSTRUCTIONS

This product is to be used with clean, fresh water. For use involving different or corrosive liquids, contact your GP customer service department. Appropriate filtration should be installed when using unclean liquids. Choose the gun that most closely matches the rated pressure, max flow and max temperature of the pressure wash system. In any case, the pressure of the machine should not exceed the permissible pressure rate imprinted on the gun.

INSTALLATION

This gun was designed to operate with hot water (in compliance with the technical specs), making sure not to exceed the max temperature. Always fit a safety valve to protect the system when the latter is under pressure. Choose a suitable nozzle and adjust the valve mounted in the front of the gun, thus obtaining a constant supply and avoiding unwanted pressure spikes. If the nozzle wears out, the pressure falls. When you install a new nozzle, adjust the system back to the original pressure.

OPERATION

The gun opens and closes a high pressure conduct by means of a piston acting on a seat; the return is controlled by a spring which releases the trigger. Attention: during pump activation ALWAYS set the gun with its safety latch connected in order to prevent accidental openings.

TROUBLESHOOTING

PROBLEM	PROBABLE CAUSES	SOLUTION
Leakage from the nozzle	Presence of impurities Gun seat worn out	Clean Replace seat Fit adequate filters and/or check
Leaking Seals	Seals worn out	Replace seals
Difficult trigger opening	High pressure inside circuit	Control the bypass valve and adjust if necessary

MAINTENANCE

Maintenance must be carried out by **Specialized Technicians** only.

STANDARD: every 400 working hours (10,000 cycles), check and lubricate the seals with water resistant grease.

SPECIAL: every 800 working hours (20,000 cycles), check the wear of the seals and internal parts and, if necessary, replace with original parts only, taking care to lubricate with water resistant grease.

CAUTION: re-assemble the gun restoring the original conditions.

GP/manufacture are not to be considered responsible for damage as a result of incorrect fitting and maintenance.

WARNING: High Pressure Systems require a primary pressure regulating device (i.e. regulator, unloader) and a secondary pressure relief device (i.e. pop-off valve, relief valve). Failure to install such relief devices properly could result in personal injury or damage to pump or property. GP does not assume any liability or responsibility for the operation of the user's high pressure system.