

**GENERAL PUMP** *A member of the Interpump Group*

**FEATURES**

- Light Cracking Pressure
- Stainless Body with Stainless Wetted Parts
- O-ring on Poppet for a Leak Proof Seal
- Solid Body Construction, Won't Come Apart During Installation

# Check Valves

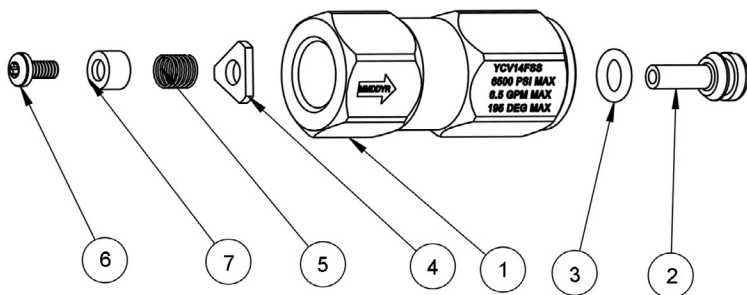
## Stainless Steel Check Valves



**SPECIFICATIONS**

Part Number	YCV14FSS	YCV38FSS	YCV12FSS	YCV34FSS
Body Material	Stainless Steel			
Max Volume	6.5 GPM	10.5 GPM	21.0 GPM	48.0 GPM
Max Discharge Pressure	6,500 PSI			
Max Fluid Temperature	195° F			
Port Sizes	1/4" NPT	3/8" NPT	1/2" NPT	3/4" NPT
Cracking Pressure	5.8 PSI	5.8 PSI	4.4 PSI	3.0 PSI
Shipping Weight	.5 lbs			
Length	1.85"	2.13"	2.60"	3.50"

**PARTS LIST**



No.	Part No.	Description	Qty.
1	520239	Body, Checkvalve, YCV14FSS	1
	520240	Body, Checkvalve, YCV38FSS	1
	520241	Body, Checkvalve, YCV12FSS	1
	520242	Body, Checkvalve, YCV34FSS	1
2	520235	Piston, Checkvalve, YCV14FSS	1
	520236	Piston, Checkvalve, YCV38FSS	1
	520237	Piston, Checkvalve, YCV12FSS	1
	520238	Piston, Checkvalve, YCV34FSS	1
3	701009V90	O-ring, Viton, YCV14FSS	1
	701011V90	O-ring, Viton, YCV38FSS	1
	701111V90	O-ring, Viton, YCV12FSS	1
	701113V90	O-ring, Viton, YCV34FSS	1
4	540081	Retainer, YSC14FSS	1
	540082	Retainer, YSC38FSS	1
	540083	Retainer, YSC12FSS	1
	540084	Retainer, YSC34FSS	1
5	720062	Spring, YCV14FSS	1
	720063	Spring, YCV38FSS	1
	720064	Spring, YCV12FSS	1
	720064	Spring, YCV34FSS	1
6	201008	Screw, 4-40 UNC, T8, YCV14FSS	1
	201009	Screw, 8-32 UNC, T15, YCV38FSS	1
	201010	Screw, 1/4-20 UNC, YCV12FSS	1
	201011	Screw, 1/4-20 UNC, YCV34FSS	1
7	520347	Spring Stop, YCV14FSS	1
	520348	Spring Stop, YCV38FSS	1
	520349	Spring Stop, YCV12FSS	1
	520349	Spring Stop, YCV34FSS	1



General Pump  
is a member of  
the Interpump Group

