

GENERAL PUMP *A member of the Interpump Group*

Check Valves

Brass Check Valves

FEATURES

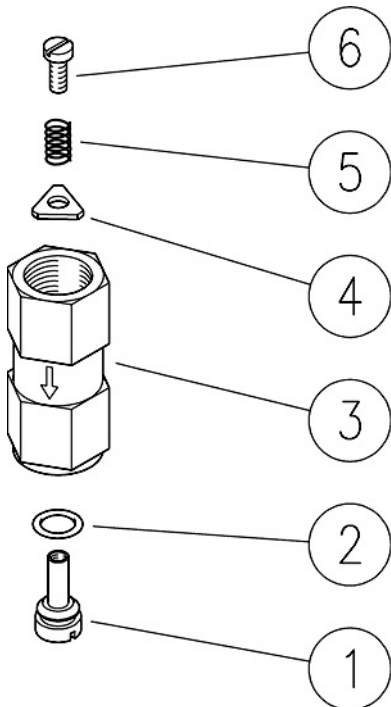
- Light Cracking Pressure
- Brass Body with Stainless Wetted Parts
- O-ring on Poppet for a Leak Proof Seal
- Solid Body Construction, Won't Come Apart During Installation



SPECIFICATIONS

Part Number	YCV14FB	YCV38FB	YCV12FB	YCV34FB
Body Material	Brass			
Max Volume	6.5 GPM	10.5 GPM	21.0 GPM	48.0 GPM
Max Discharge Pressure	2,200 PSI			
Max Fluid Temperature	195° F			
Port Sizes (BSP-FxF)	1/4"	3/8"	1/2"	3/4"
Cracking Pressure	5.8 PSI	5.8 PSI	4.4 PSI	3.0 PSI
Shipping Weight	.5 lbs			
Length	1.85"	2.13"	2.60"	3.50"

PARTS LIST



No	Part No.	Description	Qty.
1	Y60203451	Shutter Pin, YCV14FB	1
	Y60202351	Shutter Pin, YCV38FB	1
	Y60206251	Shutter Pin, YCV12FB	1
	Y60207651	Shutter Pin, YCV34FB	1
2	Y10304914	O-ring, YCV14FB	1
	Y10305514	O-ring, YCV38FB	1
	Y10317514	O-ring, YCV12FB	1
	Y10317914	O-ring, YCV34FB	1
3	Y60203131	Body, Brass 1/4", YCV14FB	1
	Y60202431	Body, Brass 3/8", YCV38FB	1
	Y60206131	Body, Brass 1/2", YCV12FB	1
	Y60207831	Body, Brass 3/4", YCV34FB	1
4	Y60203351	Washer, SS 1/4", YCV14FB	1
	Y60202151	Washer, SS 3/8", YCV38FB	1
	Y60206351	Washer, SS 1/2", YCV12FB	1
	Y60207753	Washer, SS 3/4", YCV34FB	1
5	Y60203251	Spring, SS 1/4", YCV14FB	1
	Y60202251	Spring, SS 3/8", YCV38FB	1
	Y60206451	Spring, SS 1/2", YCV12FB	1
	Y30206451	Spring, SS 3/4", YCV34FB	1
6	Y16182500	Screw, SS M3x6, YCV14FB	1
	Y16183100	Screw, SS M4x8, YCV38FB	1
	Y16183200	Screw, SS M6x8, YCV12FB	1
	Y16183200	Screw, SS M6x8, YCV34FB	1

