

GENERAL PUMP SPRAY TIPS & NOZZLES



GENERAL PUMP

High Pressure Spray Tips & Nozzles

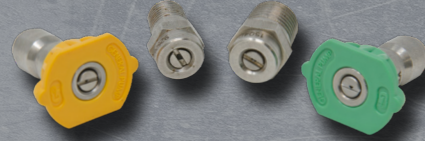


Performance

General Pump Spray Tips are built using an innovative design and manufacturing approach that ensures accuracy and provides consistent durability and performance for all types of high pressure cleaning systems.

Application Flexibility

General Pump High Pressure Spray Tips are available in Standard 1/4" NPT Male (M), 1/8" NPT Male (S), 1/4" NPT Female (F), and 1/4" aligned Quick Connect (Q). All are permanently marked with spray angle and nozzle size.

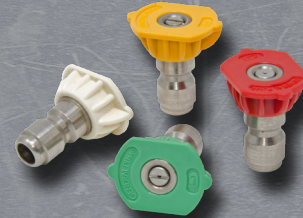


Unique Construction

General Pump High Pressure Spray Tips feature a two piece design. Inserts are through hardened and pressed into a 303 stainless steel rust-resistant body for improved durability. The contour control nozzle chamber eliminates the need for flow straighteners.

Positive Identification

The 1/4" Quick Connect (Q) Nozzles feature a spray alignment cap and been color-coded for easy identification of the spray angle. (Red = 0°, Yellow = 15°, Green = 25°, White = 40°)

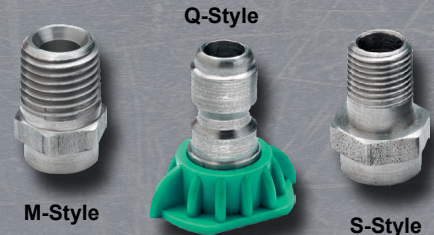


Chemical Nozzles

In addition to the standard nozzle line, General Pump also offers a complete range of chemical nozzles. These nozzles have been designed and manufactured with the same exacting standards as the high pressure tips.

Standard Nozzles Styles

Part Number	Description
F - Style	Spray Nozzle, 1/4" Female
M - Style	Spray Nozzle, 1/4" NPT-M
S - Style	Spray Nozzle, 1/8" NPT-M
Q - Style	Spray Nozzle, 1/4" Quick Disconnect



	Nozzle Size	Orifice Dia.	Pressure (PSI)												
			250	500	1000	1200	1500	2000	2500	3000	3500	4000	5000		
N O Z Z L E	2	.034	0.50	0.71	1.00	1.10	1.22	1.41	1.58	1.73	1.87	2.00	2.24		
	2.5	.039	0.63	0.88	1.25	1.37	1.53	1.77	1.98	2.17	2.34	2.50	2.80		
	3	.043	0.75	1.06	1.50	1.64	1.84	2.12	2.37	2.60	2.81	3.00	3.35		
	3.25	.045	0.81	1.15	1.63	1.78	1.99	2.30	2.57	2.81	3.04	3.25	3.63		
	3.5	.048	0.88	1.24	1.75	1.92	2.14	2.47	2.77	3.03	3.27	3.50	3.91		
	3.75	.050	0.94	1.33	1.88	2.05	2.30	2.65	2.96	3.25	3.51	3.75	4.17		
	4	.052	1.00	1.41	2.00	2.19	2.45	2.83	3.16	3.46	3.74	4.00	4.47		
	4.5	.055	1.13	1.59	2.25	2.46	2.76	3.18	3.56	3.90	4.21	4.50	5.03		
	5	.057	1.25	1.77	2.50	2.74	3.06	3.54	3.95	4.33	4.68	5.00	5.59		
	5.5	.060	1.38	1.94	2.75	3.01	3.37	3.89	4.35	4.76	5.14	5.50	6.15		
C H A R T	6	.062	1.50	2.12	3.00	3.29	3.67	4.24	4.74	5.20	5.61	6.00	6.71		
	6.5	.064	1.63	2.30	3.25	3.56	3.98	4.60	5.14	5.63	6.08	6.50	7.27		
	7	.067	1.75	2.47	3.50	3.83	4.29	4.95	5.53	6.06	6.55	7.00	7.83		
	7.5	.070	1.88	2.65	3.75	4.11	4.59	5.30	5.93	6.50	7.02	7.50	8.39		
	8	.072	2.00	2.83	4.00	4.38	4.90	5.66	6.32	6.93	7.48	8.00	8.94		
	8.5	.074	2.13	3.01	4.25	4.66	5.21	6.01	6.72	7.36	7.95	8.50	9.50		
	9	.076	2.25	3.18	4.50	4.93	5.51	6.36	7.12	7.79	8.42	9.00	10.06		
	9.5	.078	2.38	3.36	4.75	5.20	5.82	6.72	7.51	8.23	8.89	9.50	10.62		
	10	.800	2.50	3.54	5.00	5.48	6.12	7.07	7.91	8.66	9.35	10.00	11.18		
	12	.087	3.00	4.24	6.00	6.57	7.35	8.36	9.49	10.39	11.22	12.00	13.42		
15	.096	3.75	5.30	7.50	8.22	9.19	10.61	11.86	12.99	14.03	15.00	16.77			
20	.109	5.00	7.07	10.00	10.95	12.25	14.14	15.81	17.32	18.71	20.00	22.36			

High Pressure Spray Tips & Nozzles

Nozzle 1/4" Quick Disconnect



Nozzle Pack

Description - 0°, 15°, 25°, 40°, and 65° #40 Chemical			
5 Packs (Includes 65° #40 Chemical Nozzle)		4 Packs (Chemical Nozzle Not Included)	
Part Number	Orifice Size	Part Number	Orifice Size
105203	#2.5	105127	#3.0
105082	#3.0	105120	#3.5
105083	#3.5	105121	#4.0
105084	#4.0	105122	#4.5
105085	#4.5	105123	#5.0
105086	#5.0	105124	#5.5
105087	#5.5	105125	#6.0
105088	#6.0	105126	#6.5
105089	#6.5	105101	#9.0
105090	#7.0		
105194	#7.5		

Chemical Nozzles

Part Number	Description
915500MSS	#50 Orifice, 15° Spray Angle, Stainless Steel, 1/4" NPT-M
915500QB	#50 Orifice, 15° Spray Angle, Brass, Q-Style
965400M	#40 Orifice, 65° Spray Angle, 1/4" NPT-M
965400Q	#40 Orifice, 65° Spray Angle, Q-Style, 100% Brass
965400S	#40 Orifice, 65° Spray Angle, 1/8" NPT-M
925400M	#40 Orifice, 25° Spray Angle, 1/4" NPT-M
925400Q	#40 Orifice, 15° Spray Angle, Q-Style, 100% Brass
900400Q	#40 Orifice, 0° Spray Angle, Q-Style, 100% Brass



965400M



965400Q

Variable Spray Angle and High/Low Pressure Setting



YHL20

Part Number	Size/Color	Max. Pressure	Inlet	Max. Temp
YHL20	#2.0/Light Green	4,050 PSI	1/4" BSP-F	195° F
YHL25	#2.5/Pink	4,050 PSI	1/4" BSP-F	195° F
YHL30	#3.0/White	4,050 PSI	1/4" BSP-F	195° F
YHL35	#3.5/Brown	4,050 PSI	1/4" BSP-F	195° F
YHL40	#4.0/Dark Yellow	4,050 PSI	1/4" BSP-F	195° F
YHL45	#4.5/Blue	4,050 PSI	1/4" BSP-F	195° F
YHL50	#5.0/Light Purple	4,050 PSI	1/4" BSP-F	195° F
YHL55	#5.5/Dark Red	4,050 PSI	1/4" BSP-F	195° F
YHL60	#6.0/Dark Green	4,050 PSI	1/4" BSP-F	195° F
YHL70	#7.0/Orange	4,050 PSI	1/4" BSP-F	195° F
YHL80	#8.0/Silver	4,050 PSI	1/4" BSP-F	195° F

High/Low Pressure Nozzles

Part Number	Size/Color	Max. Pressure	Inlet	Max. Temp
DHL4086	0.86 mm/Green	3,200 PSI	1/4" NPT-F	195° F
DHL4099	0.99 mm/Pink	3,200 PSI	1/4" NPT-F	195° F
DHL4120	1.2 mm/Brown	3,200 PSI	1/4" NPT-F	195° F
DHL4130	1.3 mm/Yellow	3,200 PSI	1/4" NPT-F	195° F
DHL4140	1.4 mm/Blue	3,200 PSI	1/4" NPT-F	195° F
DHL4150	1.5 mm/Red	3,200 PSI	1/4" NPT-F	195° F
DHL4160	1.6 mm/Green	3,200 PSI	1/4" NPT-F	195° F
DHL4170	1.7 mm/Orange	3,200 PSI	1/4" NPT-F	195° F
DHL4180	1.8 mm/Silver	3,200 PSI	1/4" NPT-F	195° F



DHL4120

High Pressure Spray Tips & Nozzles

Premium High/Low Pressure Settings and Variable Spray Angles

Part Number	Size/Color	Max. Pressure	Inlet	Max. Temp
YHILO110	#3.0/White	4,500 PSI	1/4" BSP-F	195° F
YHILO120	#3.5/Brown	4,500 PSI	1/4" BSP-F	195° F
YHILO130	#4.0/Yellow	4,500 PSI	1/4" BSP-F	195° F
YHILO140	#4.5/Blue	4,500 PSI	1/4" BSP-F	195° F
YHILO150	#5.5/Red	4,500 PSI	1/4" BSP-F	195° F
YHILO160	#6.0/Dark Green	4,500 PSI	1/4" BSP-F	195° F
YHILO170	#7.0/Orange	4,500 PSI	1/4" BSP-F	195° F
YHL412	#12.0/Yellow	4,500 PSI	1/4" BSP-F	195° F
ZOMULTIREG99*	#5.5 GPM	3,000 PSI	1/4" BSP-F	195° F

*When ordering ZOMULTIREG99, specify nozzle as needed for applicaion



YHILO



ZOMULTIREG99

Drain Cleaning Nozzles

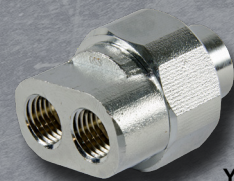


YDRNT

Part Number	Description	GPM	Max. Pressure	Inlet
YDRNT1	Microdrain, Brass, #3.5	2.3 GPM	1,750 PSI	1/4" BSP-M
YDRNT2	Microdrain, Stainless Steel, #4.0	3.8 GPM	3,650 PSI	1/4" BSP-M
YDRNT3	Microdrain, Stainless Steel, #6.0	5.7 GPM	3,650 PSI	3/8" BSP-M
ZUDRNT	Drainet, Adjustable Equivalent Orifice Diameter	16.0 GPM	3,000 PSI	3/8" BSP-M
ZUMDRNT1	Microdrain, #5.5, Equivalent Orifice Diameter	5.1 GPM	3,500 PSI	1/8" BSP-F
ZUMDRNT2	Microdrain, 8.5, Equivalent Orifice Diameter	7.4 GPM	3,000 PSI	1/8" BSP-F
2900003	Sewer Jet Nozzle, #3, 1 Front, 6 Rear	3.35 GPM	5,000 PSI	1/4" NPT-F
2900004	Sewer Jet Nozzle, #3, 3 Front, 3 Rear	3.35 GPM	5,000 PSI	1/4" NPT-F
2900005	Sewer Jet Nozzle, #3, 1 Front, 3 Rear	3.35 GPM	5,000 PSI	1/4" NPT-F

Double Nozzle Holders

Part Number	GPM	Max. Pressure	Inlet	Outlet
DDBL14	10.5 GPM	2,900 PSI	1/4" BSP-F	(2) 1/4" BSP-F
YDBL14	10.5 GPM	2,900 PSI	1/4" BSP-F	(2) 1/4" BSP-F
YDBL18	10.5 GPM	2,900 PSI	1/4" BSP-F	(2) 1/8" BSP-F
ZUDBL	5.5 GPM	3,000 PSI	1/4" BSP-F	(2) 1/4" BSP-F



YDBL



YSTN14F

Steam Nozzle

Part Number	Description	Max. Pressure	Inlet
YSTN14F	1.5 mm, .06 Nozzle	1,450 PSI	1/4" BSP-F

Adjustable Nozzle Holder

Part Number	GPM	Max. Pressure	Inlet	Outlet
YADJNOZ	8.0 GPM	3,650 PSI	1/4" BSP-F	1/4" BSP-F



YADJNOZ

Duct Cleaning Nozzle

Part Number	Description	GPM	Max. Pressure	Inlet	Nozzle
DDC25020	Duct Cleaning Nozzle, Grease Zirk on Swivel	8.0 GPM	4,000 PSI	1/4" NPT-F	(2) 925020S



DDC25020

High Pressure Spray Tips & Nozzles

YR Rotating Nozzles

Part Number	Size	Min. Pressure	Max. Pressure	Inlet	Max. Temp
YR36K is designed to operate at pressures most common in the market					
YR36K30	3.0	1,150 PSI	3,650 PSI	1/4" BSP-F	212° F
YR36K35	3.5	1,150 PSI	3,650 PSI	1/4" BSP-F	212° F
YR36K40	4.0	1,150 PSI	3,650 PSI	1/4" BSP-F	212° F
YR36K45	4.5	1,150 PSI	3,650 PSI	1/4" BSP-F	212° F
YR36K50	5.0	1,150 PSI	3,650 PSI	1/4" BSP-F	212° F
YR36K55	5.5	1,150 PSI	3,650 PSI	1/4" BSP-F	212° F
YR36K60	6.0	1,150 PSI	3,650 PSI	1/4" BSP-F	212° F
YR36K65	6.5	1,150 PSI	3,650 PSI	1/4" BSP-F	212° F
YR36K70	7.0	1,150 PSI	3,650 PSI	1/4" BSP-F	212° F
YR36K80	8.0	1,150 PSI	3,650 PSI	1/4" BSP-F	212° F
YR51K is designed for higher pressures and more demanding applications					
YR51K30	3.0	2,600 PSI	5,100 PSI	1/4" BSP-F	212° F
YR51K35	3.5	2,600 PSI	5,100 PSI	1/4" BSP-F	212° F
YR51K40	4.0	2,600 PSI	5,100 PSI	1/4" BSP-F	212° F
YR51K45	4.5	2,600 PSI	5,100 PSI	1/4" BSP-F	212° F
YR51K50	5.0	2,600 PSI	5,100 PSI	1/4" BSP-F	212° F
YR51K55	5.5	2,600 PSI	5,100 PSI	1/4" BSP-F	212° F
YR51K60	6.0	2,600 PSI	5,100 PSI	1/4" BSP-F	212° F
YR51K65	6.5	2,600 PSI	5,100 PSI	1/4" BSP-F	212° F
YR51K70	7.0	2,600 PSI	5,100 PSI	1/4" BSP-F	212° F
YR51K80	8.0	2,600 PSI	5,100 PSI	1/4" BSP-F	212° F



YR36K30



YR51K30

Y3K Rotating Nozzles



Y3K040

Part Number	Size	Max. Pressure	Inlet	Max. Temp
Y3K020	2.0	3,000 PSI	1/4" BSP-F	194° F
Y3K030	3.0	3,000 PSI	1/4" BSP-F	194° F
Y3K035	3.5	3,000 PSI	1/4" BSP-F	194° F
Y3K040	4.0	3,000 PSI	1/4" BSP-F	194° F
Y3K045	4.5	3,000 PSI	1/4" BSP-F	194° F
Y3K050	5.0	3,000 PSI	1/4" BSP-F	194° F
Y3K055	5.5	3,000 PSI	1/4" BSP-F	194° F
Y3K060	6.0	3,000 PSI	1/4" BSP-F	194° F
Y3K065	6.5	3,000 PSI	1/4" BSP-F	194° F
Y3K070	7.0	3,000 PSI	1/4" BSP-F	194° F

Y5K Rotating Nozzles

Part Number	Size	Max. Pressure	Inlet	Max. Temp
Y5K020	2.0	5,000 PSI	1/4" BSP-F	194° F
Y5K030	3.0	5,000 PSI	1/4" BSP-F	194° F
Y5K035	3.5	5,000 PSI	1/4" BSP-F	194° F
Y5K040	4.0	5,000 PSI	1/4" BSP-F	194° F
Y5K045	4.5	5,000 PSI	1/4" BSP-F	194° F
Y5K050	5.0	5,000 PSI	1/4" BSP-F	194° F
Y5K055	5.5	5,000 PSI	1/4" BSP-F	194° F
Y5K060	6.0	5,000 PSI	1/4" BSP-F	194° F
Y5K065	6.5	5,000 PSI	1/4" BSP-F	194° F
Y5K080	8.0	5,000 PSI	1/4" BSP-F	194° F
Y5K090	9.0	5,000 PSI	1/4" BSP-F	194° F
Y5K100	10.0	5,000 PSI	1/4" BSP-F	194° F
Y5K120	12.0	5,000 PSI	1/4" BSP-F	194° F
Y5K150	15.0	5,000 PSI	1/4" BSP-F	194° F
Y5K200	20.0	5,000 PSI	1/4" BSP-F	194° F



Y5K100

Adjustable Rotating Nozzles



ZROTOMAX1



ZRMAX581

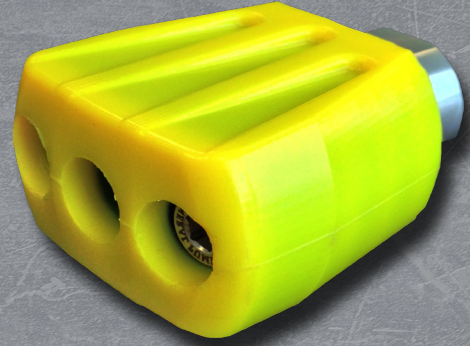
Part Number	Size/Color	GPM	Max. Pressure	Inlet	Max. Temp
ZROTOMAX1	Red	2.1 - 2.6 GPM	3,500 PSI	1/4" BSP-F	176° F
ZROTOMAX2	Light Blue	2.9 - 4.0 GPM	3,500 PSI	1/4" BSP-F	176° F
ZROTOMAX3	Black	4.2 - 5.5 GPM	3,500 PSI	1/4" BSP-F	176° F
ZRMAX581	140/Red	2.3 - 4.7 GPM	5,800 PSI	1/4" BSP-F	176° F
ZRMAX583	160/Black	3.3 - 6.6 GPM	5,800 PSI	1/4" BSP-F	176° F

High Pressure Spray Tips & Nozzles

Hydro Excavating Nozzles

Features:

- Standard 1/2" NPT Connection (Female)
- High Impact - 0 Degree Nozzles (Three)
- Stainless Steel Body
- Hardened Stainless Nozzle Inserts for Long Life
- Easily Change Worn Nozzles
- Dimensions: 1-3/4" Long x 2-1/4" Wide
- Flow to 30 GPM, Pressure to 4,000 PSI
- Urethane Coated for Durability and Operator Protection
- Multiple Color Options Available (with Volume Purchase)



Part Number	Nozzle 1	Nozzle 2	Nozzle 3	Nozzle Equiv.	Flow - GPM							
					1000 PSI	1500 PSI	2000 PSI	2500 PSI	3000 PSI	3500 PSI	4000 PSI	
HXNOZ												
HX212	900020SH	900010SH	900020SH	#5.0	2.50 GPM	3.06 GPM	3.54 GPM	3.95 GPM	4.33 GPM	4.68 GPM	5.00 GPM	
HX222	900020SH	900020SH	900020SH	#6.0	3.00 GPM	3.67 GPM	4.24 GPM	4.74 GPM	5.20 GPM	5.61 GPM	6.00 GPM	
HX232	900020SH	900030SH	900020SH	#7.0	3.50 GPM	4.29 GPM	4.95 GPM	5.53 GPM	6.06 GPM	6.55 GPM	7.00 GPM	
HX323	900030SH	900020SH	900030SH	#8.0	4.00 GPM	4.90 GPM	5.66 GPM	6.32 GPM	6.93 GPM	7.48 GPM	8.00 GPM	
HX333	900030SH	900030SH	900030SH	#9.0	4.50 GPM	5.51 GPM	6.36 GPM	7.12 GPM	7.79 GPM	8.42 GPM	9.00 GPM	
HX343	900030SH	900040SH	900030SH	#10.0	5.00 GPM	6.12 GPM	7.07 GPM	7.91 GPM	8.66 GPM	9.35 GPM	10.00 GPM	
HX434	900040SH	900030SH	900040SH	#11.0	5.50 GPM	6.74 GPM	7.78 GPM	8.70 GPM	9.53 GPM	10.29 GPM	11.00 GPM	
HX444	900040SH	900040SH	900040SH	#12.0	6.00 GPM	7.35 GPM	8.49 GPM	9.49 GPM	10.39 GPM	11.22 GPM	12.00 GPM	
HX454	900040SH	900050SH	900040SH	#13.0	6.50 GPM	7.96 GPM	9.19 GPM	10.28 GPM	11.26 GPM	12.16 GPM	13.00 GPM	
HX545	900050SH	900040SH	900050SH	#14.0	7.00 GPM	8.57 GPM	9.90 GPM	11.07 GPM	12.12 GPM	13.10 GPM	14.00 GPM	
HX555	900050SH	900050SH	900050SH	#15.0	7.50 GPM	9.19 GPM	10.61 GPM	11.86 GPM	12.99 GPM	14.03 GPM	15.00 GPM	
HX565	900050SH	900060SH	900050SH	#16.0	8.00 GPM	9.80 GPM	11.31 GPM	12.65 GPM	13.86 GPM	14.97 GPM	16.00 GPM	
HX656	900060SH	900050SH	900060SH	#17.0	8.50 GPM	10.41 GPM	12.02 GPM	13.44 GPM	14.72 GPM	15.90 GPM	17.00 GPM	
HX666	900060SH	900060SH	900060SH	#18.0	9.00 GPM	11.02 GPM	12.73 GPM	14.23 GPM	15.59 GPM	16.84 GPM	18.00 GPM	
HX676	900060SH	900070SH	900060SH	#19.0	9.50 GPM	11.64 GPM	13.44 GPM	15.02 GPM	16.45 GPM	17.77 GPM	19.00 GPM	
HX767	900070SH	900060SH	900070SH	#20.0	10.00 GPM	12.25 GPM	14.14 GPM	15.81 GPM	17.33 GPM	18.71 GPM	20.00 GPM	
HX777	900070SH	900070SH	900070SH	#21.0	10.50 GPM	12.86 GPM	14.85 GPM	16.60 GPM	18.19 GPM	19.64 GPM	21.00 GPM	
HX787	900070SH	900080SH	900070SH	#22.0	11.00 GPM	13.47 GPM	15.56 GPM	17.39 GPM	19.05 GPM	20.58 GPM	22.00 GPM	
HX878	900080SH	900070SH	900080SH	#23.0	11.50 GPM	14.08 GPM	16.26 GPM	18.18 GPM	19.92 GPM	21.51 GPM	23.00 GPM	
HX888	900080SH	900080SH	900080SH	#24.0	12.00 GPM	14.70 GPM	16.97 GPM	18.97 GPM	20.78 GPM	22.45 GPM	24.00 GPM	
HX898	900080SH	900090SH	900080SH	#25.0	12.50 GPM	15.31 GPM	17.68 GPM	19.76 GPM	21.65 GPM	23.39 GPM	25.00 GPM	
HX989	900090SH	900080SH	900090SH	#26.0	13.00 GPM	15.92 GPM	18.38 GPM	20.55 GPM	22.52 GPM	24.32 GPM	26.00 GPM	
HX999	900090SH	900090SH	900090SH	#27.0	13.50 GPM	16.53 GPM	19.09 GPM	21.35 GPM	23.38 GPM	25.26 GPM	27.00 GPM	
HX9109	900090SH	900100SH	900090SH	#28.0	14.00 GPM	17.15 GPM	19.80 GPM	22.14 GPM	24.25 GPM	26.19 GPM	28.00 GPM	
HX10910	900100SH	900090SH	900100SH	#29.0	14.50 GPM	17.75 GPM	20.51 GPM	22.93 GPM	25.11 GPM	27.13 GPM	29.00 GPM	
HX101010	900100SH	900100SH	900100SH	#30.0	15.00 GPM	18.37 GPM	21.21 GPM	23.72 GPM	25.98 GPM	28.06 GPM	30.00 GPM	



GP Companies, Inc
 1174 Northland Drive, Mendota Heights, MN 55120
 Phone: 651.686.2199 Fax: 800.535.1745
www.generalpump.com email: sales@gpcompanies.com
facebook.com/gpcompanies



General Pump is part of
 the Interpump Group, the
 world leader in plunger pumps.