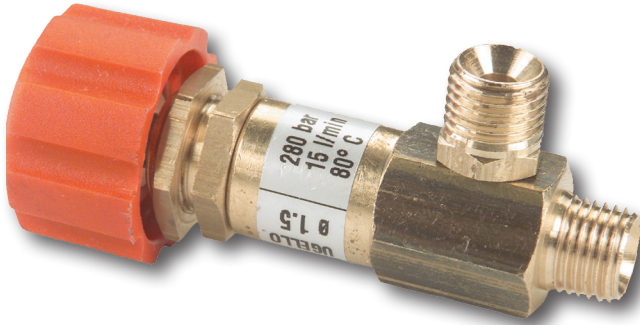
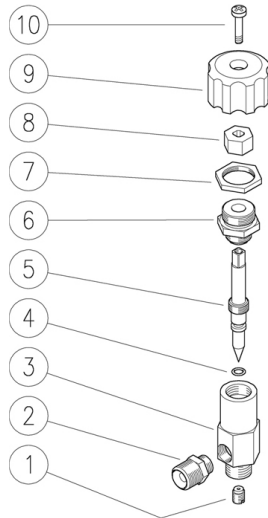


## SPECIFICATIONS



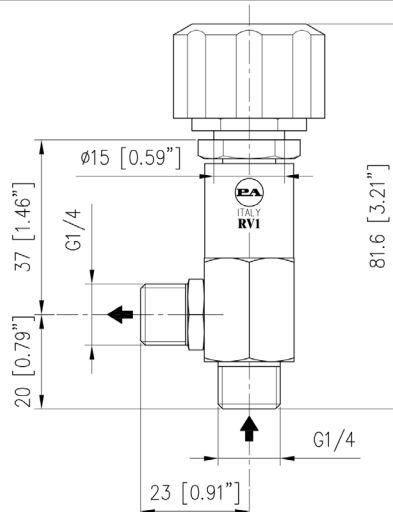
MODEL	Y29092008	Y29092012	Y29092015
NOZZLE SIZE	0.8	1.2	1.5
GPM	2.3 GPM	3.4 GPM	4.0 GPM
RATED	3,650 PSI	3,650 PSI	3,650 PSI
MAX	4,050 PSI	4,050 PSI	4,050 PSI
PANEL FITTING	3/4"	3/4"	3/4"
INLET	1/4" BSP-M	1/4" BSP-M	1/4" BSP-M
OUTLET	1/4" BSP-M	1/4" BSP-M	1/4" BSP-M
MAX TEMP	175° F	175° F	175° F
SHP WHT	0.3 lbs.	0.3 lbs.	0.3 lbs.

## PARTS LIST



No.	Part Number	Description	Qty.
1.	Y29094151	Nozzle, 0.8mm, SS (Y29092008)	1
1.	Y29094251	Nozzle, 1.2mm, SS (Y29092012)	1
1.	Y29094351	Nozzle, 1.5mm, SS (Y29092015)	1
2.	Y29092631	Coupling, 1/4M-1/8mm BSP, Brass	1
3.	Y29092131	Casing, 1/4 BSP-F, Brass	1
4.	701008V	O-ring, 1.78x4.48, Vi70	1
5.	Y29092251	Shutter pin, M10x1, SS	1
6.	Y29092331	Nipple, 3/8 BSP-M-3/8SP-M, Brass	1
7.	Y29093231	Locknut, 3/8 BSP-F, Brass	1
8.	Y29092431	Groove nut, Brass	1
9.	Y29092784	Knob	1
10.	Y16184000	Screw, M4x14mm	1

## DIMENSIONS



General Pump  
is a member of  
the Interpump Group



**GENERAL PUMP** 1174 Northland Drive • Mendota Heights, MN 55120  
Phone: 651.686.2199 • Fax: 800.535.1745 • e-mail: sales@gpcompanies.com • www.generalpump.com

Ref 310184 Rev. A  
06-19

