

GENERAL PUMP A member of the Interpump Group

A80R

Self-Rotating Tank Cleaning Head

FEATURES

- Designed for quick and efficient cleaning of interior surfaces of tanks and barrels.
- Complete orbital coverage of all interior surfaces.
- Rotating speed independent from supply water temperature, pressure or flow.
- Stainless Steel construction with built-in inlet filter for trouble-free operation.
- Suitable for use in the food industry.
- Self-powered by high pressure cleaning fluid

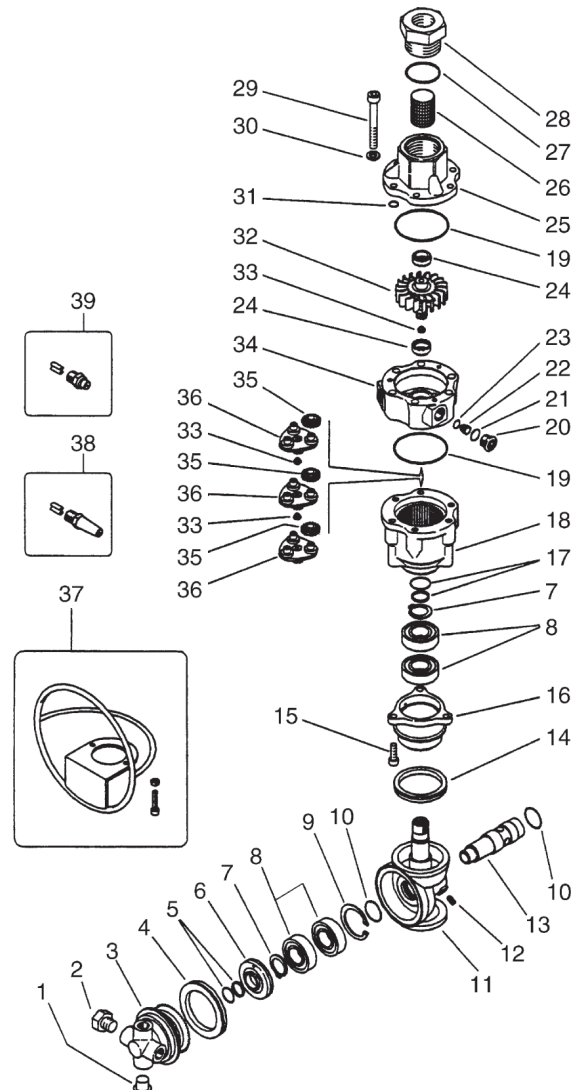


SPECIFICATIONS

Part Number	Y25482000
Flow Rate	5-21 GPM
Rated Pressure	2,000 PSI
Minimum Pressure	435 PSI
Max. Fluid Temperature	194° F
Main Axis Rotating Speed	4-10 RPM
Inlet Filter	38 mesh
Inlet Port	1/2" BSP
Nozzle Ports (2 or 4)	1/4" NPT
Minimum Tank Opening	4"
Weight	11.7 lbs.
Dimensions	10.7"x 4.75"

PARTS LIST

Item	Part Number	Description	Qty.
1	Y15372014	1/4" Plastic Plug	1
2	Y15372114	1/4 NPT Plug, Screw, SS	2
3	Y80013252	Pinion Gear, Z58, SS	1
4*	Y10206005	V-ring, 54x5 mm	1
5*	Y10203016	Seal, Retaining Ring	1
6	Y80021151	Ring, SS	1
7†	Y10102005	SS Elastic Ring, 20mm, Ring Seal	2
8†	Y11442042	SS 20x42x12m Bearing	4
9†	Y10102505	SS Elastic Ring, 42 mm, Snap Ring	1
10*	Y10320010	O-ring, 2.62x23.47 mm, Viton	2
11	Y80013352	Shaft, SS, Ai303, Housing 90° Drive	1
12	Y16211005	SS M5x10 mm Dowel, Screw, Retainer	2
13	Y80020951	SS Pin	1
14*	Y10205005	V-ring, 45x5 mm	1
15	Y17189620	SS M6x20 Screw	3
16	Y80013152	SS Gear, Z39, Pinion	1
17*	Y10203018	Seal, Retaining Ring	1
18	Y80020752	SS Gear, Housing, Gear Box	1
19*	Y10308058	OOring, 1.78x56.87 mm, Viton	2
20	Y80021951	SS Plug, M14, Screw, Retaining, M14x1	3
21*	Y10306010	O-ring, 1.78x12.42 mm	3
22	Y80022151	SS Internal Injector, 2mm, Impeller Nozzle 2 mm	3
	Y80022251	SS Internal Injector, 3mm, Impeller Nozzle 3 mm	3
	Y80022351	SS Internal Injector, 4mm, Impeller Nozzle 4 mm	3
	Y80222451	SS Internal Injector, 5mm, Impeller Nozzle 5 mm	3
	Y80222551	SS Internal Injector, 6mm, Impeller Nozzle 6 mm	3
	Y80022651	SS Internal Injector, 7mm, Impeller Nozzle 7 mm	3
23*	Y10300300	O-ring, 1x8 mm	3
24†	Y80021284	Bushing	2
25	Y80020152	SS Manifold, Collar	1
26	Y28001453	SS Net, 38 Mesh, Filter	1
27*	Y10320836	O-ring, 2.62x36.17 mm, Viton	1
28	Y80021751	SS Coupling, Connector	1
29	Y16195560	SS TCEI M80x60 mm Screw	6
30	Y14357300	SS 8.4 mm Washer	6
31*	Y10310993	O-ring, 2.4x8.3 mm	3
32	Y80020351	Impeller, A1304	1
33†	Y80021384	Bushing, D. 7 mm	3
34	Y80020252	SS Z50 Gear, Housing, Impeller	1
35†	Y80020438	Z10 Gear	9
36	Y80020500	Planet Gear Holder	3
37	Y25482200	A80R Nozzle Protector	1
38	Y80041823	SS 1/4 NPT Nozzle, 1.8 mm + Fan	2-4
	Y80042023	SS 2 mm-1/4 NPT Nozzle + Fan	2-4
	Y80043023	SS Ext. 3 mm 1/4 NPT Nozzle + Fan	2-4
39	Y161380xx	SS Nozzle + Fan, 1/4 M 0.0xx	2-4
*	Y25482824	Seal Kit	
†	Y25485224	Repair Kit	



A80R

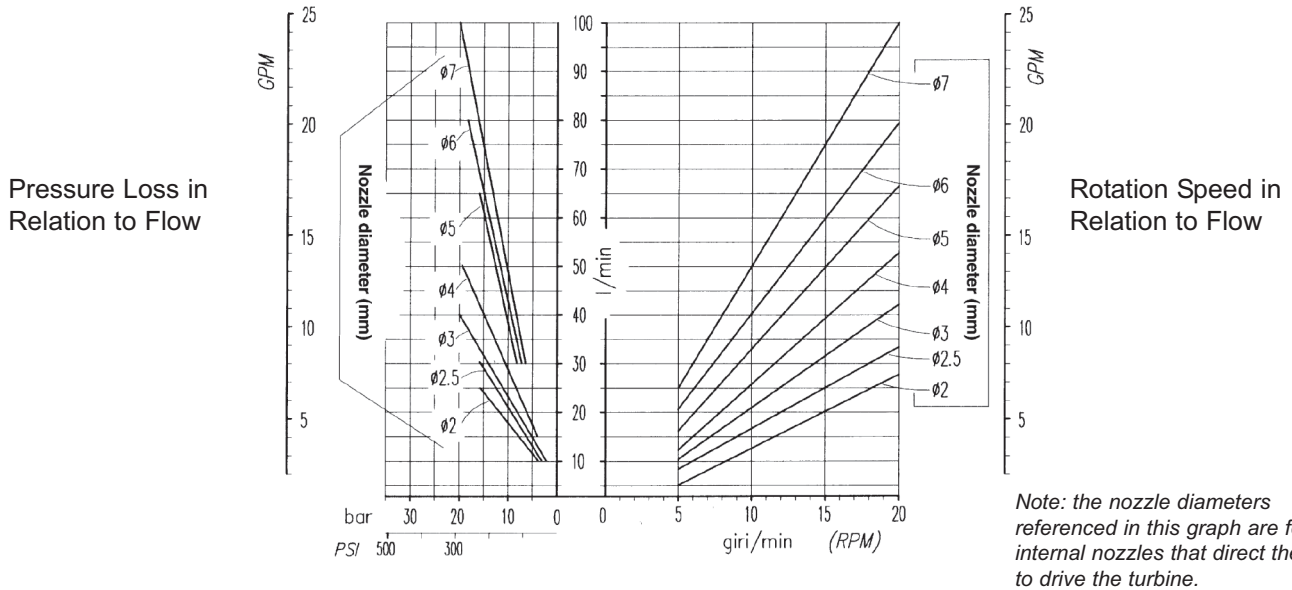
Tank Cleaning Head

OPERATION

The rotation of the head is made by a hydrokinetic unit formed by a turbine, driven by 3 nozzles, and an epicycloidal reduction gear, utilizing the same water that will do the washing.

The rotating frequency can be adjusted, within the value expressed in the technical specification, by varying the diameter of the bore of the 3 internal nozzles of the hydrokinetic unit, and is always proportional to the flow as shown on the diagram below.

Changes in pressure (at a constant delivery rate) or water temperature will not modify the rotation speed.



CYCLE TIME

A complete washing cycle is made after 58 revolutions.

This is the point at which the jets have covered a complete sphere and returned to the starting point.

For optimum washing, 3 complete cycles are advised.

The time required for one complete cycle can be drawn from the following chart:

