

FEATURES

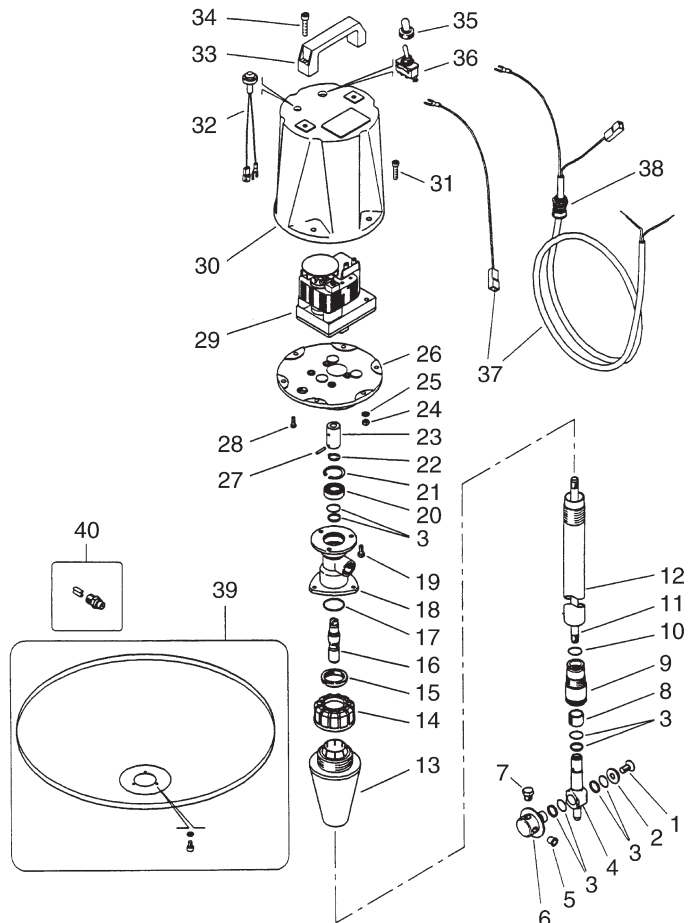
- Designed for quick and efficient cleaning of interior surfaces on tanks and barrels
- Small spray turret fits through most barrel and tank access ports
- Complete orbital coverage of all interior surfaces
- Rotating speed independent from supply water temperature, pressure or flow
- Stainless steel construction with built-in inlet filter for trouble-free operation
- Suitable for utilization in the food industry
- Powerful, low voltage drive motor. Accessory transformer available

SPECIFICATIONS

Part Number	Y25450000
Rated Pressure	2000 PSI
Flow Rate	4–6.6 GPM
Maximum Fluid Temperature	194°F
Main Axis Rotating Speed	10 RPM
Inlet Port	3/8" BSPP
Nozzle Ports (2 or 4)	1/8" NPT
Electric Motor: Voltage	24 VAC
Watts	40 W
Phase	1
Freq	50/60 Hz
Minimum Tank Opening	2.5"
Weight	13.5 lbs.
Dimensions	49.4" x 2.0"

PARTS LIST

Item	Part Number	Description	Kit	Qty.
	Y25.4500.00	M63E Electric Tank Cleaning Head 50 (1/8), 24V/50Hz		
	Y25.4500.04	M63E Electric Tank Cleaning Head 45 (M4), 24V/50Hz		
1	Y16.1954.12	S.S. M8x12 mm Screw		1
2	Y80.0015.51	S.S. Washer, 8.5 mm		1
3	Y10.2030.00	Seal, Retaining Ring	*	4
4	Y80.0005.52	S.S. Housing, M10		1
5	Y15.3710.18	1/8" Plastic Plug		2
	Y15.3704.00	M4 Plastic Plug		
6	Y80.0014.51	Z=57 M8 1/8 Gear		1
	Y80.0016.51	S.S. Gear, z:57-M4		
7	Y15.3711.18	S.S. 1/8 NPT Plug		2
	Y16.1830.00	S.S. M4 Screw		
8	Y80.0009.85	Bushing	†	1
9	Y80.0007.51	Z:34 Gear		1
10	Y10.3184.10	O-ring, 2.62 x 18.72 mm, Viton	*	1
11	Y80.0003.56	S.S. Tube, M10 x 894 L		1
12	Y80.0052.56	S.S. M28-895 mm Tube		1
13	Y80.0021.84	Tapered 70 mm Plug		1
14	Y80.0316.84	Plastic Nut		1
15	Y80.0012.51	S.S. M28 mm Nut, Lock Ring		1
16	Y80.0002.51	S.S. Shaft		1
17	Y10.3205.10	O-ring, 2.62 x 26.64 mm, Viton	*	1
18	Y80.0051.52	S.S. Adapter, Coupling		1
19	Y16.1870.02	S.S. M5 x 12 mm Screw		3
20	Y11.4412.28	S.S. 12 x 28 x 8 mm Bearing	†	1
21	Y10.1011.05	S.S. 28 mm Snap Ring, Ring Seal	†	1
22	Y10.0999.05	S.S. 12 mm Snap Ring, Ring Seal	†	1
23	Y80.0031.51	S.S. Joint		1
24	Y11.4524.51	M5 Nut		6
25	Y14.3560.00	S.S. Washer, 5.3 x 10 mm		6
26	Y80.0032.42	Electric Motor Frame, Flange		1
27	Y15.1030.00	S.S. 3 x 16 mm Pin		2
28	Y16.1834.15	S.S. M4 x 12 mm Screw		4
29	Y13.0825.00	24V Gear Motor, Reducer		1
30	Y80.0026.84	Cover		1
31	Y16.1873.00	S.S. M5 x 20 mm Screw		6
32	Y15.0800.00	24V Indicator Light		1
33	Y12.8311.00	Handle		1
34	Y16.1888.00	S.S. M6 x 16 mm Screw		2
35	Y12.5016.05	Switch Protector, Cover		1
36	Y12.5016.10	On-off Switch		1
37	Y12.5016.00	6 m Cable		1
38	Y13.6000.00	Cable Protector, Nut		1
39	Y80.0044.00	Cover		1
40	Y16.1363.xx	S.S. Nozzle+Fan, 1/8 M 0.0xx		2-4
*	Y25.4525.24	Seal Kit		
†	Y25.4530.24	Repair Kit		



LOSS OF PRESSURE IN RELATION TO FLOW

