



**FEATURES**

3 way flow-through design pressure regulator with automatic unloading

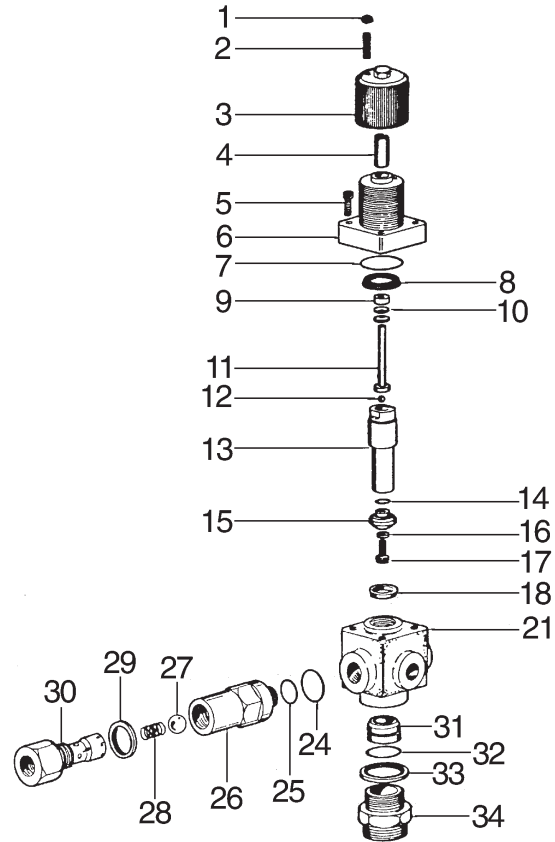
- Regulates operating pressure of the system by releasing excess volume through the by-pass.
- Limits operating pressure to the adjusted value.
- Unloading eliminates high pressure in the pump.
- Protects the system from overpressurization.

**SPECIFICATIONS**

Part Number	VU2
Maximum Volume	48 GPM
Maximum Pressure	2900 PSI
Port Sizes: Inlet	1 – 11 BSPP
Outlet	3/4 – 14 BSPP
By-pass	1-1/2 – 11 BSPP
Weight	12.1 lb.
Material: Upper Valve Body	OT58 Brass
Lower Valve Body	OT58 Brass
Valve Seat	AISI 431 s.s.
Valve	AISI 420 s.s. with Stellite

### PARTS LIST

Pos.	Part Number	Description	Qty.
1	F872000153	Nut, Jam, M6	1
2	F871234360	Screw, Set, Socket Head, M6 x 30	1
3	F003000030	Knob, Adjusting	1
4	F074200040	Sleeve, Spring	1
5	F871121306	Screw, Socket Head, M8 x 35	4
6	F062300100	Cover, Valve	1
7	F881010121	O-Ring, 1.732 x .103	1
8	F881030014	Packing, 32 mm	1
9	F031300090	Spacer, Spring	1
10	F872110202	Spring, Disc, .323 x .709 x .059	32
11	F025000000	Guide, Spring, Steel	1
12	F811900007	Ball, 5/16", Carbon Steel	1
13	F074200030	Piston, SS AISI 420	1
14	F881010008	O-Ring, .739 x .070, Buna-N	1
15	F083200010	Ball, Piston, SS AISI 420	1
16	F872040100	Washer, M8, Copper	1
17	F871121603	Screw, Socket Head, M8 x 20, SST	1
18	F881030011	Packing, 25 mm, Buna-N	1
21	F060300040	Body, Valve	1
24	F881010120	O-Ring, 1.674 x .103, Buna-N	1
25	F881010116	O-Ring, 1.174 x .103, Buna-N	1
26	F060200010	Body, Check Valve	1
27	F811902017	Ball, 7/8", SS AISI 420 HT	1
28	F090290010	Spring, Check Valve	1
29	F881110103	Washer, Flat, 1", Buna-N on Steel Frame	1
30	F021300120	Nipple, Check Valve, SS AISI 431	1
31	F081200170	Seat, Valve, SS AISI 431	1
32	F881010117	O-Ring, 1.229 x .103, Buna-N	1
33	F881110104	Washer, Flat, 1-1/4", Buna-N on Steel Frame	1
34	F084300020	Nipple, Bypass, Brass OT58	1



Positions Included	N. PCS.	VU2
7, 8, 14, 15, 16, 17, 18, 24, 25, 27, 28, 29, 31, 32, 33	1	F1242

### INSTALLATION

The VU2 valve should be mounted on the pressure line in any position (horizontal or vertical) which will allow easy access to the pressure adjusting knob.

The by-pass line should be free from any kind of restriction which may generate back pressures at the valve, it should have an internal diameter of at least 1.6 inches at any point, and it should not be connected to the pump suction line (see below for correct installation).

The nipple pos. 34 and washer pos. 33 should not be removed from their original position or replaced with other than genuine General Pump replacement parts.

