

GENERAL PUMP

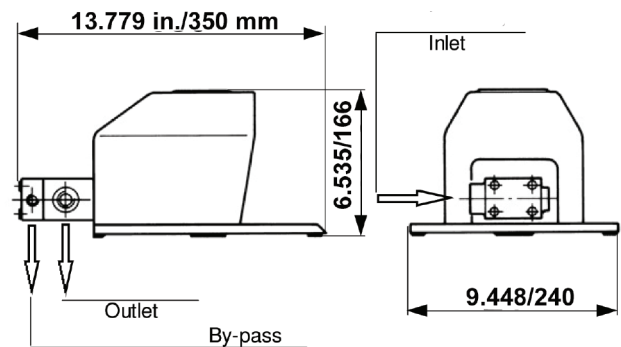
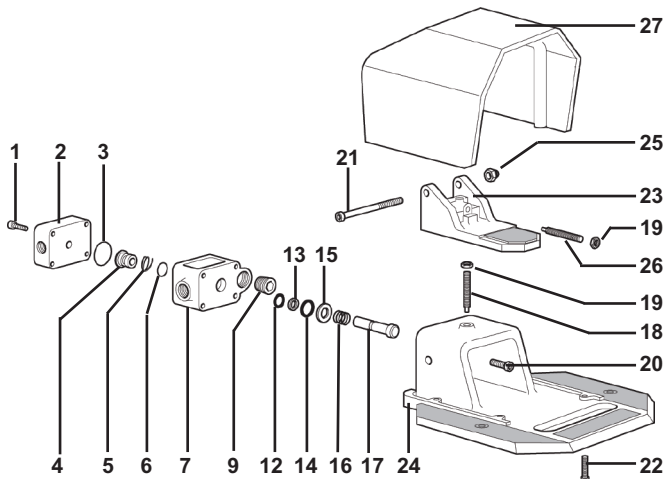
A member of the Interpump Group

VP12**Industrial Foot Valve****SPECIFICATIONS**

Part Number	VP12
Flow	21.0 GPM
Maximum Pressure	21,750 PSI
Ports Sizes:	
Inlet	3/8" BSP-F
Outlet	3/8" BSP-F
Bypass	3/8" BSP-F
Dimensions	13.78" x 6.54" x 9.5"
Weight	22.5 lbs.
Materials	Stainless Steel

FEATURES

- Used to facilitate internal cleaning of pipe and hoses with flexible or long rigid lances.
- The pressure foot system leaves both hands free for easy control of the lance during operation.
- When released, the internal bypass system diverts the flow to the bypass line, thus eliminating high pressure instantaneously without hydraulic shock.

**PARTS LIST**

No.	Part Number	Description	Qty.
1.	F035000020	Upper Body Screw	4
2.	F060200070	Upper Valve Body	1
3.*	F881012206	O-ring, Ø 29.75 x 3.53	1
4.*	F081200280	Valve Seat	1
5.*	F881112000	Anti-extrusion Ring	1
6.*	F881012106	O-ring, Ø 15.08 x 2.62	1
7.	F060200030	Valve Body	1
9.	F821210009	Cap, 1/2" G, Conical	1
12.*	F881012001	O-ring, Ø 6.07 x 1.78	1
13.*	F010500300	Anti-extrusion Ring	1
14.*	F881011002	O-ring, Ø 10 x 1.5	1
15.	F010200030	Washer	1
16.*	F090200110	Spring	1
17.*	F083200100	Control Rod	1
18.	F035000040	Running Board Screw	1
19.	F872001104	Nut, M8	2
20.	F871121604	Screw, TCEI, M8 x 25 INOX	4
21.	F871121119	Screw, TCEI, M8 x 100	1
22.	F871115105	Screw, TCEI, M6 x 20	4
23.	F003100010	Pedal	1
24.	F011100010	Running Board	1
25.	F872011054	Nut, Self-locking	1
26.	F035000030	Screw, Pedal	1
27.	F041400010	Cover	1
*	F1250	Repair Kit	



General Pump
is a member of
the Interpump Group



Ref 300751 Rev. A
03-10



GENERAL PUMP 1174 Northland Drive • Mendota Heights, MN 55120

Phone: (651)686-2199 • Fax: (800)535-1745 • e-mail: sales@gpcompanies.com • www.generalpump.com

GENERAL PUMP