

TX1812HA17

Hydraulic Triplex Plunger Pump

FEATURES

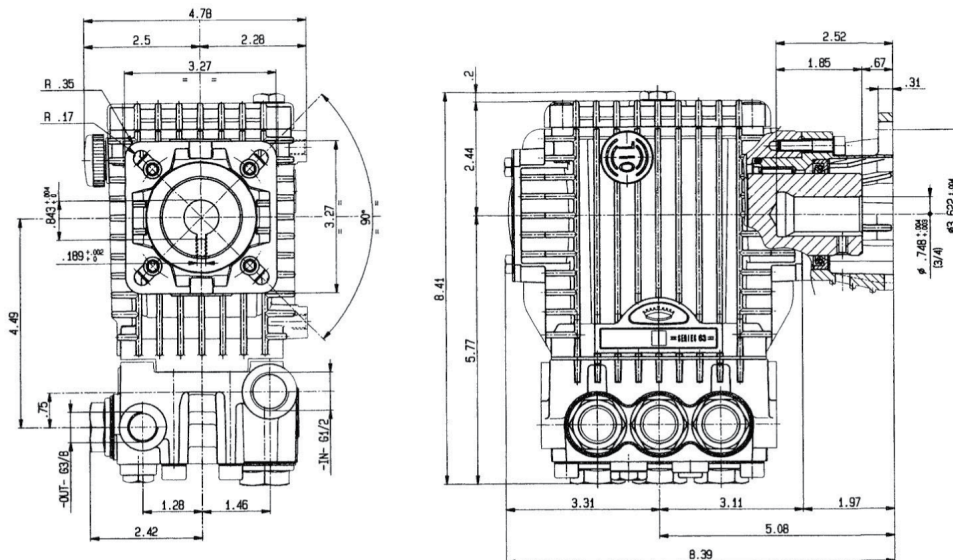
- SAE Type "A" hydraulic flange, 5/8" straight shaft
- Set screw for key way
- Oversized bearings
- Longer life low and high pressure seals
- Forged brass manifold



SPECIFICATIONS

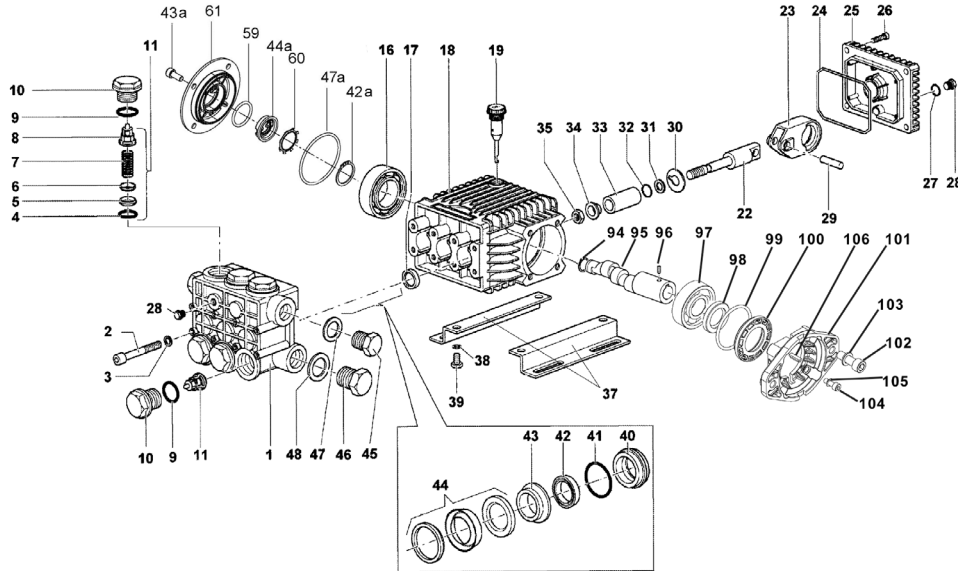
Pump Model	TX1812HA17
Maximum Volume	4.20 GPM
Maximum Discharge Pressure	2465 PSI
Horsepower	6.5 Hydraulic HP
Maximum Pump Speed	1750 RPM
Maximum Inlet Pressure	125 PSI
Minimum Inlet Pressure	3 Ft. Water / 2.6 in. Hg
Plunger Bore	.709 / 18 mm
Plunger Stroke	.472 in. / 12mm
Oil Capacity	14.0 oz.
Maximum Fluid Temperature	165° F
Inlet Port Thread	1/2-14 BSPP-F
Discharge Port Thread	3/8-19 BSPP-F
Shaft Diameter	5/8 in / 16 mm Hollow
Weight	18 lbs.
Dimensions	8.4" x 8.4" x 4.8"

DIMENSIONAL DRAWING



General Pump is a member of the Interpump Group





PARTS LIST

ITEM	PART NO.	DESCRIPTION	QTY.	ITEM	PART NO.	DESCRIPTION	QTY.	ITEM	PART NO.	DESCRIPTION	QTY.
1.	63120341	Manifold, 18 mm	1	28.	98204100	Plug, 1/4" G	2	47.	96738000	Washer, M17.5	1
2.	99319200	Screw, M8 x 65	8	29.	97733500	Connecting Rod Pin	3	47a.	90389800	O-ring Ø 56.82x2.62	1
3.	96701400	Lockwasher, M8.4	8	30.	96707500	Flinger Washer	3	48.	96751400	Washer, M21.5	1
4.	701115	O-ring	6	31.	660024	Anti-extrusion Ring	3	59.	90385900	O-ring Ø 25.07x2.62	1
5.	36200366	Valve Seat	6	32.	701009	O-ring	3	60.	90067100	Stop Ring	1
6.	36711501	Valve Plate	6	33.	44040109	Ceramic Plunger, 18mm	3	61.	58150122	Side Cover	1
7.	94737600	Spring	6	34.	44211570	Bushing	3	94.	90063500	Ring, Ø 25	1
8.	36202551	Valve Cage	6	35.	92221600	Nut, M8	3	95.	63023765	Crankshaft	1
9.	701002	O-ring	6	37.	50200074	Pump Feet	2	96.	99179000	Screw, M6x6	1
10.	98222600	Valve Cap	6	38.	96701600	Washer	4	97.	91837100	Ball Bearing	1
11.	36711501	Valve Assembly	6	39.	99303700	Screw	4	98.	90164400	Radial Ring Ø 30x42x7	1
16.	91832800	Ball Bearing	1	40.	63080170	Seal Retn'r, 18mm	3	99.	90409700	O-ring, Ø 55.56x3.56	1
17.	90159500	Oil Seal	3	41.	90360800	O-ring	3	100.	50211551	Spacer	1
18.	63010022	Crankcase	1	42.	90265000	Seal, LP, 18mm	3	101.	10076322	Hydraulic Flange	1
19.	98210300	Oil Dip Stick	1	42a.	90063500	Stop Ring Ø 25	1	102.	F99368600	Screw, M10x30	2
22.	63050066	Plunger Guide	3	43.	63216170	Int. Ring, 18mm	3	103.	99710300	Washer, Ø 10.5x18x8	2
23.	63030022	Connecting Rod	3	43a.	99183700	Screw M6x14	8	104.	99186800	Screw, M6x18	4
24.	90392000	O-ring, Cover	1	44.	90265500	Packing Assy, 18mm	3	105.	203510	Washer, Ø6.4x10x0.7	4
25.	63160022	Rear Crankcase Cover	1	44a.	53210851	Oil Level Indicator	1	106.	91468500	Key	1
26.	99183700	Screw, M6 x 14	4	45.	98210000	Plug, 3/8" G	1				
27.	701013	O-ring	1	46.	98217600	Plug, 1/2" G	1				

* 53150001 Oil Level Indicator Assembled W/O Screws and O-ring

REPAIR KITS

TORQUE SPECS*

KIT NO.	123	124	159	161	163	165	167
ITEM NO's INCLUDED IN KIT	4, 5, 6, 7, 8 (11)	9, 10	17	42, 44	40	43	40, 41, 42, 43, 44
NUMBER OF ASSEMBLIES IN KIT	6	6	3	3	3	3	1
NUMBER OF CYLINDERS KIT WILL SERVICE	3	3	3	3	3	3	1

Pos.	Ft/lb	Nm
2	14.7	20
10	95.9	130
12	7.3	10
26	7.3	10
28	14.7	20
35	14.7	20
45	29.4	40
46	29.4	40
104	7.3	10

* Decrease torque by 20% if threads are lubricated

WARNING: High Pressure Systems require a primary pressure regulating device (i.e. regulator, unloader) and a secondary pressure relief device (i.e. pop-off valve, relief valve). Failure to install such relief devices properly could result in personal injury or damage to pump or property. GP does not assume any liability or responsibility for the operation of the user's high pressure system.

WARNING: This product can expose you to chemicals including lead, which is known to the state of California to cause cancer and birth defects or other reproductive harm. For more information, go to www.P65Warnings.ca.gov

