

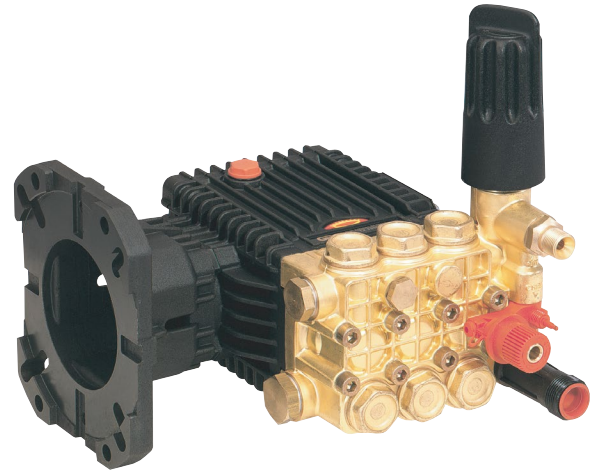
GENERAL PUMP *A member of the Interpump Group*

TX Series 63 UI

Direct Drive Triplex Plunger Pump

FEATURES

- Built-in Pressure Trapping Unloader and Injector
- Next Generation Packings for Exceptional Seal Life
- Solid White Ceramic Plungers
- Direct-Drive for Convenience and Durability
- Oversized Connecting Rod



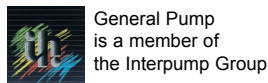
SPECIFICATIONS

Pump Model	TX1506G6UIL	TX1508G8UIL	TX1509G8UIL	TX1510G8UIL
Maximum Volume	2.6 GPM	3.0 GPM	3.5 GPM	4.0 GPM
Maximum Pressure	3000 PSI			
Maximum RPM	3400 RPM			
Maximum Inlet Pressure	125 PSI			
Minimum Inlet Pressure	3 ft (2.6 in Hg)			
Maximum Fluid Temperature	165° F			
Bore (in / mm)	.591 in / 15mm			
Stroke (in / mm)	.256 in / 6.5 mm	.315 in / 8 mm	.355 in / 9 mm	.394 in / 10 mm
Oil Capacity	14.0 oz			
Inlet Port Thread	1/2"-14 BSP-F			
Discharge Port Thread	3/8"-19 BSP-F			
Shaft Diameter	3/4" - Hollow		1" - Hollow	
Motor Flange	J609-a		J609-b	
Weight	18.2 lb			
Dimensions - Nominal	11.3 x 9.5 x 9.1			

PERFORMANCE*

Pump Model	TX1506G6UIL	TX1508G8UIL	TX1509G8UIL	TX1510G8UIL
Recommended Nozzle Size	#3.0	#3.5	#4.0	#4.5
PSI at Recommended Nozzle	3000	3000	3000	3000
PSI at .5 Size Larger	2200	2250	2400	2400
PSI at 1.0 Size Larger	1650	1750	1950	2000
PSI at 1.5 Sizes Larger	1300	1400	1600	1750
PSI at 2.0 Sizes Larger	1050	1150	1350	1500

* Values are theoretical. Actual performance may vary slightly depending on conditions

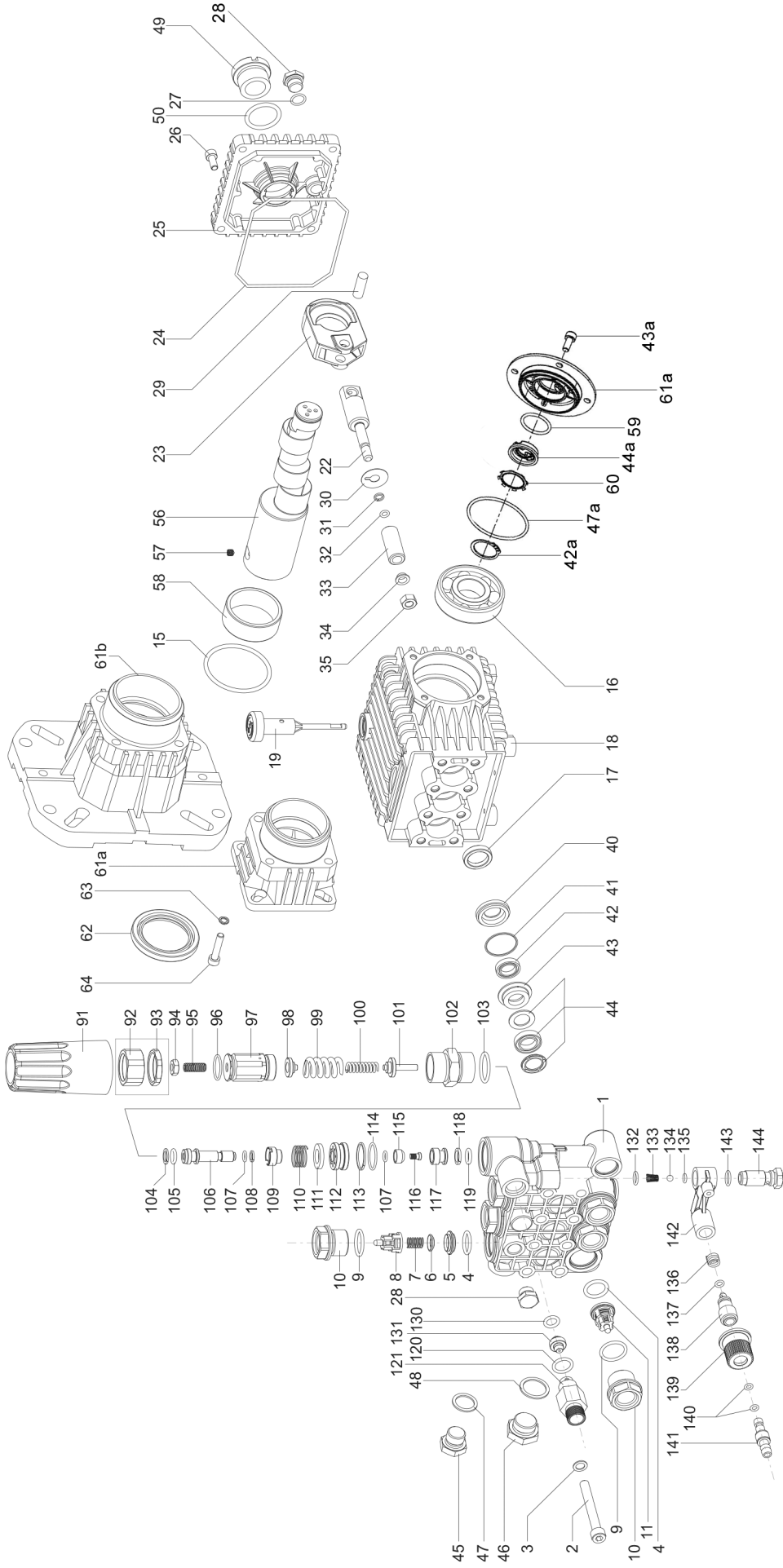


Ref 300515 Rev. D
10-17



TX Series 63 UI

Direct Drive Triplex Plunger Pump



PART LIST

Item	Part no.	Description	Qty	Item	Part no.	Description	Qty	Item	Part no.	Description	Qty
1	63120041	Manifold, 15 mm	1	44	90261200	Packing Assy, 15mm	3	103	90385700	O-ring	1
2	99319200	Screw, M8 x 65	8	44a	53210851	Oil Level Indicator	1	104	90505200	Anti-Ext ring	1
3	96701400	Lockwasher, M8.4	8	45	98210000	Plug, 3/8" G	1	105	90382000	O-ring	1
4	701115	O-ring	6	46	98217600	Plug, 1/2" G	1	106	36323470	Sleeve	1
5	36200366	Valve Seat	6	47	96738000	Washer, M17.5	1	107	90357500	O-ring	2
6	36711501	Valve Plate	6	47a	90389800	O-ring Ø 56.82x2.62	1	108	90502500	Anti-Ext ring	1
7	94737600	Spring	6	48	96751400	Washer, M21.5	1	109	36323070	Spacer	1
8	36202551	Valve Cage	6	49	63210051	Oil Level Indicator	1	110	94748500	Spring	1
9	701002	O-ring	6	50	90405100	O-ring	1	111	36323151	Valve	1
10	98222600	Valve Cap	6	56	63026465	Crankshaft, 6.5mm (3/4")	1	112	36322970	Valve guide	1
11	36711501	Valve Assembly	6		63028065	Crankshaft, 8mm (1")		113	90360000	O-ring	1
16	91832900	Ball Bearing	1		63028265	Crankshaft, 9mm (1")		114	90514400	Anti-Ext ring	1
17	90159500	Oil Seal	3		63028465	Crankshaft, 10mm (1")		115	36319066	Spherical valve	1
18	63010022	Crankcase	1	57	99179000	Screw, M6 x 6	1	116	99150900	Screw	1
19	98210300	Oil Dip Stick	1	58	91856800	Roller bearing	1	117	36316466	Seat	1
22	63050066	Plunger Guide	3	59	90385900	O-ring Ø 25.07x2.62	1	118	701614	O-ring	1
23	63030022	Connecting Rod	3	61a	10061722	Flange 3/4", gas engine	1	119	90506500	Anti-Ext ring	1
24	90392000	O-ring, Cover	1	61b	10051822	Flange 1", gas engine	1	120	90383200	O-ring	1
25	63160022	Rear Crankcase Cover	1	61c	58150122	Stop Ring	1	121	10007870	Nipple, Disc - 3/8"G-M	1
26	99183700	Screw, M6 x 14	4	60	90067100	Stop Ring	1	122	10014770	Nipple, Disc - M22 (opt)	1
27	701013	O-ring	1	62	90169000	Oil Seal	1	130	701614	O-ring	1
28	98204100	Plug, 1/4" G	2	63	203510	Washer	4	131	10015166	Nozzle 2.0mm (2.1-3.0)	1
29	97733500	Connecting Rod Pin	3	64	99191200	Screw, M6 x 30	4	132	10007666	Nozzle 2.2mm (3.1-4.5)	1
30	96707500	Flinger Washer	3	91	36318751	Handle (Red)	1	133	94821700	O-ring	1
31	660024	Anti-extrusion Ring	3	92	36318670	Locking sleeve (opt. w/93)	1	134	97478200	Ball	1
32	701009	O-ring	3	93	92293500	Locking nut (opt. w/92)	1	135	701501	O-ring	1
33	52040009	Ceramic Plunger, 15mm	3	94	92221800	Nut	1	136	94738300	Spring	1
34	44211570	Bushing	3	95	99305400	Set screw	1	137	701612	O-ring	1
35	92221600	Nut, M8	3	96	701019	O-ring	1	138	36256470	Shutler	1
40	63080070	Seal Retn'r, 15mm	3	97	36318570	Regulator knob	1	139	36256551	Knob	1
41	90360800	O-ring	3	98	36316970	Spring seat	1	140	701008	O-ring	2
42	90260800	Seal, LP, 15mm	3	99	94743600	Spring (3000 PSI)	1	141	36260870	Hose barb	1
42a	90063500	Stop Ring Ø 25	1	100	94734500	Spring	1				
43	63216070	Int. Ring, 15mm	3	101	36323370	Stem	1				
43a	99183700	Screw M6x14	8	102	36322870	Guide bushing	1				

* 53150001 Oil Level Indicator Assembled W/O Screws and O-ring

REPAIR KITS

Kit No.	K137	K123	K124	K94	K159	K160	K162	K164	K166
Items in Kit	104-119	4-8 (11)	9, 10	120, 130, 132-137, 140, 143	17	42, 44	40	43	40-44
Pcs. in Kit	1	6	6	1	3	3	3	3	1

*Decrease torque by 20% if threads are lubricated.

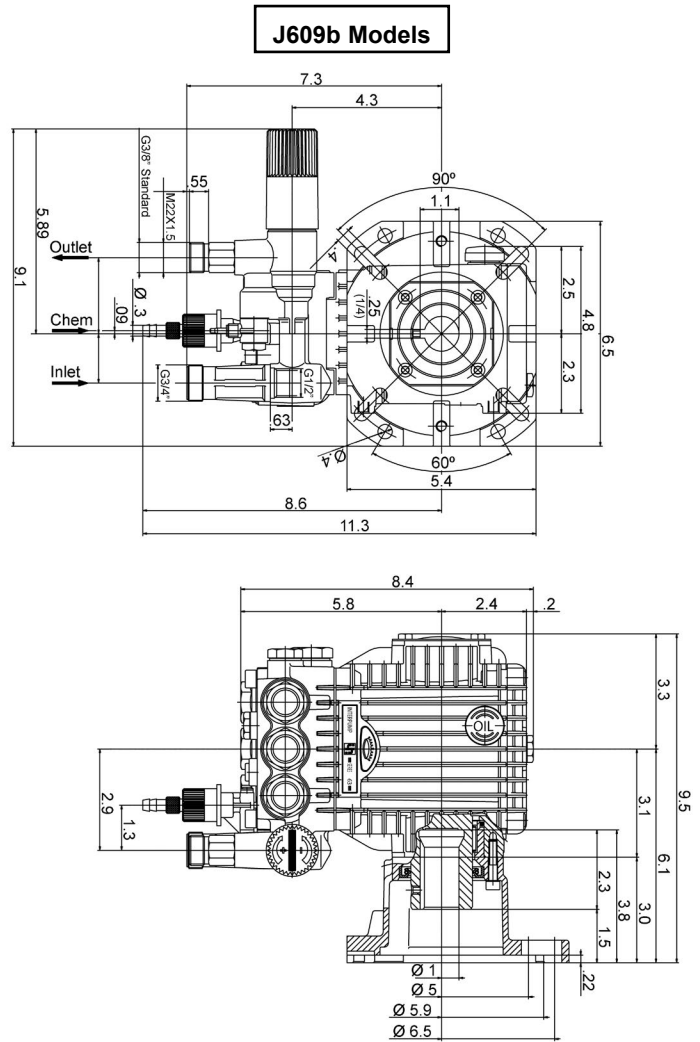
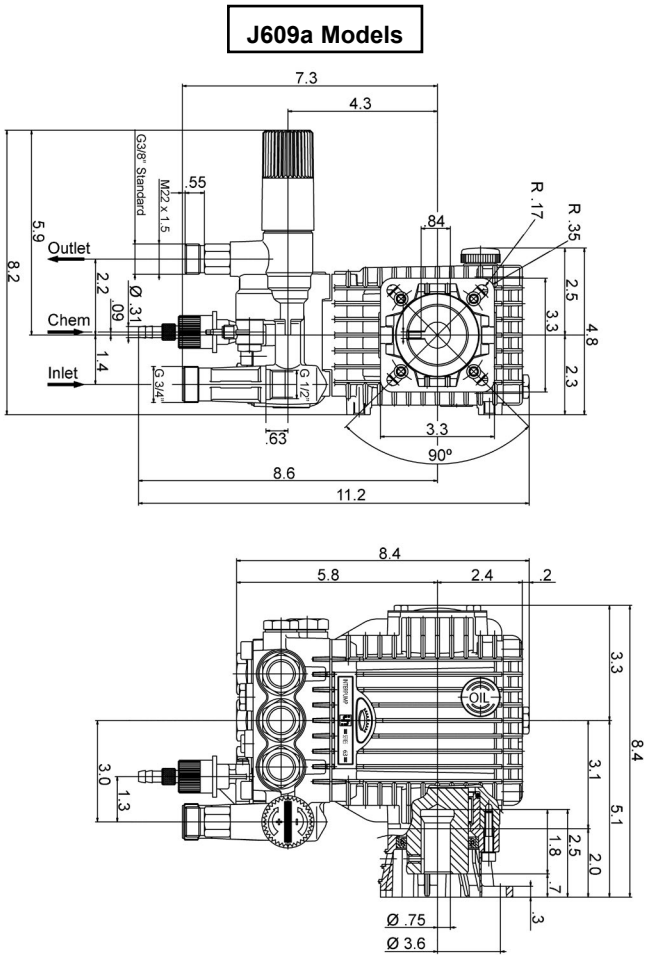
TORQUE SPECS*

Item	Ft/lb	Nm
2	14.7	20
10	95.9	130
12	7.3	10
26	7.3	10
28	14.7	20
35	11.0	15
45	29.4	40
46	29.4	40
64	7.3	10

Ref 300515 Rev. D
10-17



DIMENSIONS* (INCHES)



*Dimensions and/or specifications subject to change without notice

ACCESSORIES

ACCESSORIES SOLD SEPARATELY



Pump Thermal Protector (PTP)

- 145°F Protection for your pump against thermal shock
- 90° 1/4" Hosebarb



Trigger Guns

- 5000 psi
- 320°F Maximum temperature



Hose Reels

- 3500 psi
- 50', 100', 150', and 200' Capacities



Easy Start Valve

- Makes manual starting of gasoline engines easier
- 90° 1/4" Hosebarb



Quick Disconnect Nozzles

- Available in 0°, 15°, 25°, and 40° spray patterns
- 1/4" QC fits coupler **D10001**
- Also available in 1/8" and 1/4" NPT-M