

36 mm bore - Triplex Plunger Pumps

FEATURES

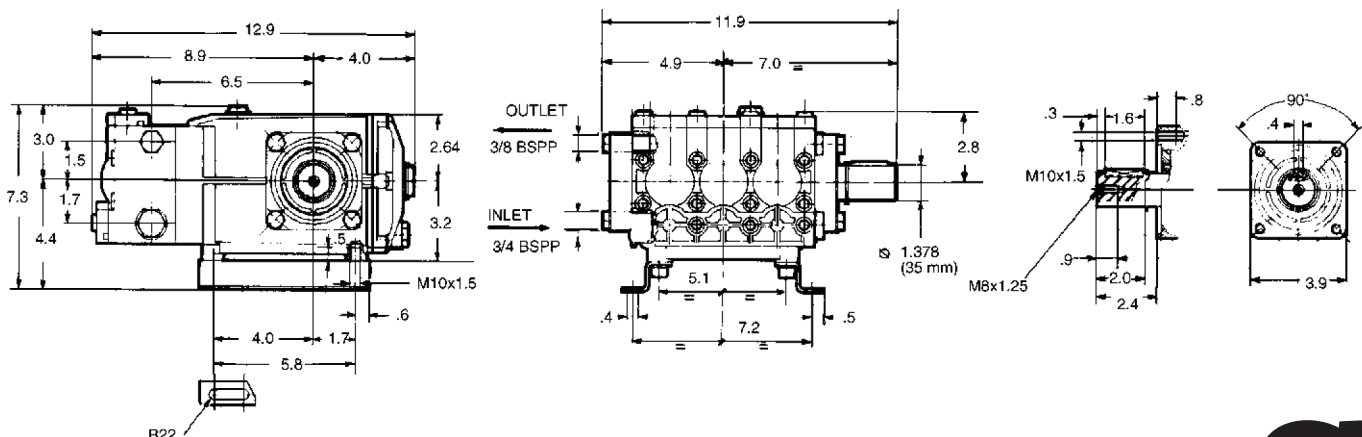
- The industry's choice for high-flow applications
- Large-capacity, die-cast anodized aluminum, oil-bath crankcase
- Over-sized connecting rods for maximum life
- Heavy-duty tapered roller bearing
- Solid ceramic plungers with continuously lubricated packings
- Unitized stainless steel inlet and discharge valves



SPECIFICATIONS

| Pump Model | T41 |
|----------------------------|----------------------|
| Maximum Volume | 12.0 GPM |
| Maximum Discharge Pressure | 900 PSI |
| Maximum Pump Speed | 650 RPM |
| Maximum Inlet Pressure | 125 PSI |
| Maximum Inlet Vacuum | 9 ft. water (7.9 Hg) |
| Plunger Bore (in / mm) | 1.417 in. / 36 mm |
| Plunger Stroke (in / mm) | .945 in. / 24 mm |
| Oil Capacity | 50.7 oz. |
| Maximum Fluid Temperature | 165°F |
| Inlet Port Thread | 3/4-14 BSPP-F |
| Discharge Port Thread | 3/8-19 BSPP-F |
| Shaft Diameter | 1.378 in. / 35 mm |
| Weight | 37 lbs. |
| Dimensions | 12.9" x 11.9" x 7.3" |

DIMENSIONAL DRAWING

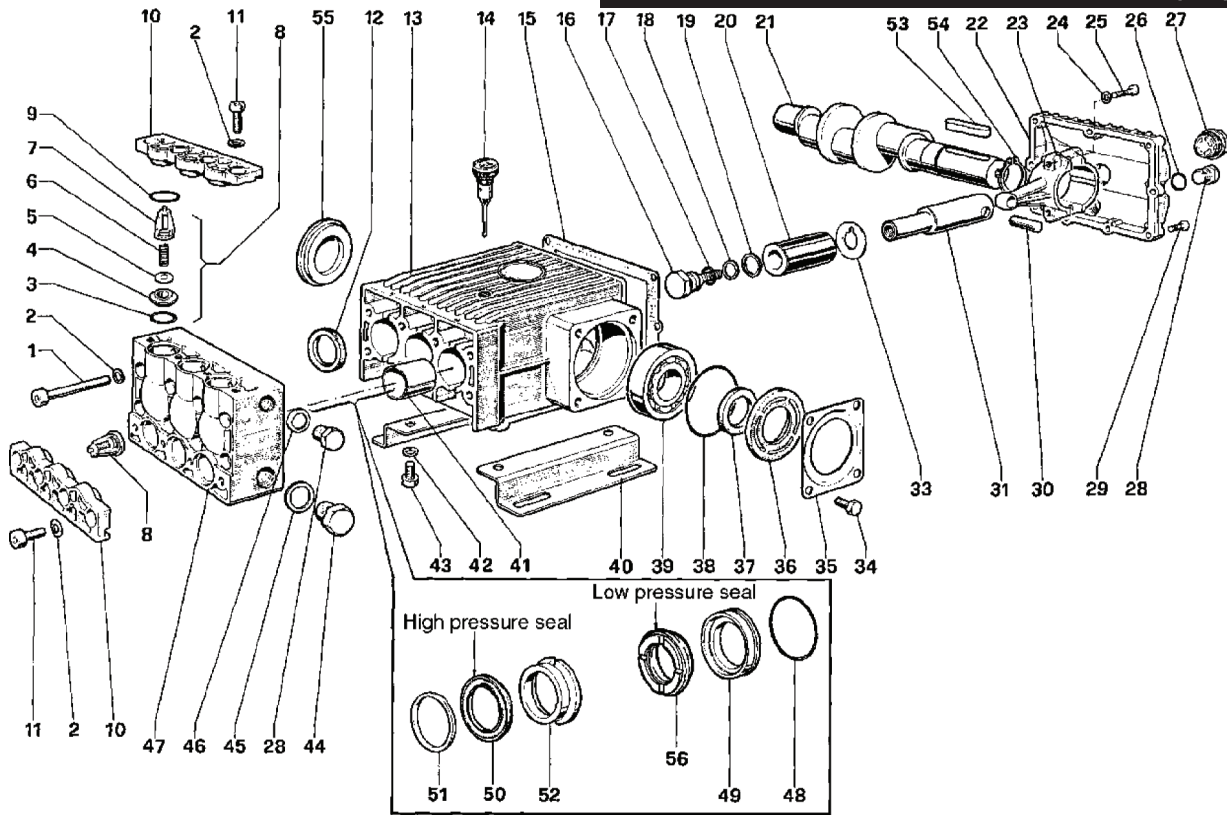


General Pump
is a member of
the Interpump Group



T Series 69 - 36 mm Bore

GENERAL PUMP *A member of the Interpump Group*



PARTS LIST

| ITEM | PART NO. | DESCRIPTION | KIT NO. | QTY. | ITEM | PART NO. | DESCRIPTION | KIT NO. | QTY. | ITEM | PART NO. | DESCRIPTION | KIT NO. | QTY. |
|------|----------|----------------|---------|------|------|----------|---------------------|---------|------|------|----------|-------------------|---------|------|
| 1. | 99378700 | Screw | | 8 | 20. | 69040009 | Plunger (36 mm) | | 3 | 40. | 47200074 | Feet | | 2 |
| 2. | 96710400 | Washer | | 16 | 21. | 69020535 | Crankshaft | | 1 | 41. | 90916200 | Bushing | | 3 |
| 3. | 90385900 | O-ring | 62 | 6 | 22. | 69160022 | Cover | | 1 | 42. | 96710600 | Washer | | 4 |
| 4. | 36201766 | Valve Seat | 62 | 6 | 23. | 69030001 | Connecting Rod | | 3 | 43. | 99364400 | Screw | | 4 |
| 5. | 36201876 | Valve Plate | 62 | 6 | 24. | 96701400 | Washer | | 6 | 44. | 98226500 | Cap | | 1 |
| 6. | 94739400 | Spring | 62 | 6 | 25. | 99309900 | Screw | | 6 | 45. | 96770000 | Washer | | 1 |
| 7. | 36200851 | Valve Guide | 62 | 6 | 26. | 90383300 | O-ring | | 1 | 46. | 96738000 | Washer | | 1 |
| 8. | 36706001 | Valve Assy. | 62 | 6 | 27. | 97596800 | Oil Level Indicator | | 1 | 47. | 69120022 | Manifold | | 1 |
| 9. | 90405500 | O-ring | | 6 | 28. | 98210000 | Cap | | 2 | 48. | 701133 | O-ring | 39, 40 | 3 |
| 10. | 69218022 | Valve Cover | | 2 | 29. | 99186700 | Screw | | 9 | 49. | 69080270 | Packing Retainer | 39, 40 | 3 |
| 11. | 99366900 | Screw | | 8 | 30. | 97739800 | Pin | | 3 | 50. | 90282000 | Packing | 38, 39 | 3 |
| 12. | 90165600 | Oil Seal | 37 | 3 | 31. | 69050022 | Plunger Guide | | 3 | 51. | 69100293 | Head Ring | 39, 41 | 3 |
| 13. | 69010022 | Crankcase | | 1 | 32. | 96756500 | Washer | | 3 | 52. | 69216870 | Intermediate Ring | 39, 42 | 3 |
| 14. | 98210600 | Oil Dip Stick | | 1 | 33. | 99363600 | Screw | | 8 | 53. | 91496900 | Key | | 1 |
| 15. | 69211984 | Cover Gasket | | 1 | 34. | 68150074 | Cover | | 2 | 54. | 90069500 | Retaining Ring | | 1 |
| 16. | 69219566 | Plunger Screw | 74 | 3 | 35. | 69211551 | Spacer | | 1 | 55. | 69211651 | Spacer | | 1 |
| 17. | 90384100 | O-ring | 74 | 3 | 36. | 90167200 | Oil Seal | 32 | 1 | 56. | 90282300 | Seal, L.P., 36 mm | 38, 39 | 3 |
| 18. | 90510700 | Anti-ext. Ring | 74 | 3 | 37. | 90413100 | O-ring | | 2 | | | | | |
| 19. | 96755500 | Washer | 74 | 3 | 38. | 91848000 | Bearing | | 2 | | | | | |
| | | | | | 39. | | | | 2 | | | | | |

REPAIR KITS

| KIT NO. | 32 | 37 | 38 | 39 | 40 | 41 | 42 | 62 | 74 |
|--------------------------------------|----|----|--------|------------------------|--------|----|----|--------------------|----------------|
| ITEM NO's INCLUDED IN KIT | 37 | 12 | 50, 56 | 48, 49, 50, 51, 52, 56 | 48, 49 | 51 | 52 | 3, 4, 5, 6, 7, (8) | 16, 17, 18, 19 |
| NUMBER OF ASSEMBLIES IN KIT | 2 | 3 | 3 | 1 | 3 | 6 | 3 | 6 | 3 |
| NUMBER OF CYLINDERS KIT WILL SERVICE | - | 3 | 3 | 1 | 3 | 3 | 3 | 3 | 3 |

TORQUE SPECS*

| Position | Ft.-Lbs | Nm |
|----------|---------|------|
| 1 | 29.4 | 39.8 |
| 11 | 44.2 | 59.9 |
| 16 | 29.4 | 39.8 |
| 25 | 14.7 | 19.9 |
| 27 | 13.2 | 17.9 |
| 28 | 29.4 | 39.8 |
| 29 | 7.3 | 9.9 |
| 34 | 29.4 | 39.8 |
| 49 | 29.4 | 39.8 |
| 44 | 51.5 | 69.8 |

* Decrease torque by 20% if threads are lubricated

