



FEATURES

3 way flow-through design, pneumatically-operated pressure regulator with automatic unloading

- Regulates operating pressure of the system by releasing excess volume through the by-pass.
- Limits pressure in the system to the adjusted value.
- Unloading eliminates high pressure in the pump.
- Adjusted pressure can be set ON or OFF by means of the double-acting pneumatic cylinder.
- Reduces pump start-up load.
- Protects the system from overpressurization.
- Suitable for automatic systems and remote control.

SPECIFICATIONS

Part Number	PN/VU2
Maximum Volume	48 GPM
Maximum Pressure	2900 PSI
Air Pressure	Minimum 90 PSI Maximum 115 PSI
Port Sizes: Inlet	1 – 11 BSPP
Outlet	3/4 – 14 BSPP
By-pass	1-1/2 – 11 BSPP
Inlet-Outlet Air Ports	1/4 – 19 BSPP
Weight	19.8 lb.
Material: Upper Valve Body	OT58 Brass
Lower Valve Body	OT58 Brass
Valve Seat	AISI 431 s.s.
Valve	AISI 420 s.s. with Stellite

WARRANTY

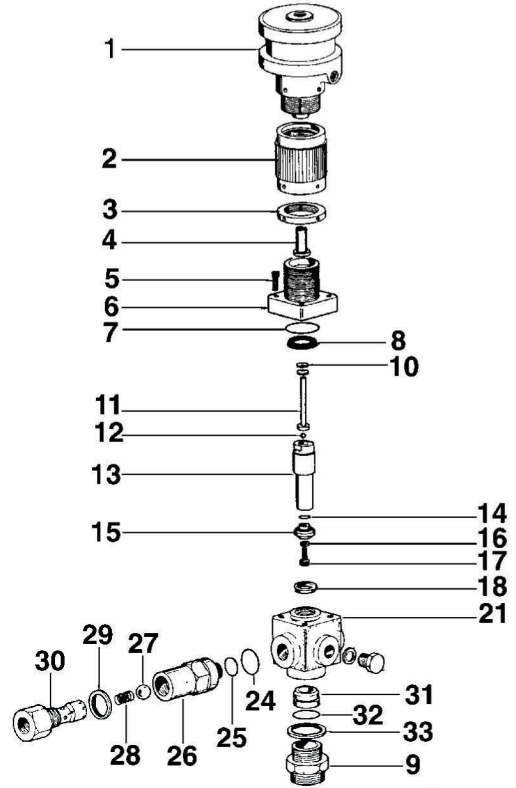
General Pump accessories are warranted by the manufacturer to be free from defects in material and workmanship. Period of warranty shall be 90 days from date product is received by the original buyer. Liability of manufacturer under the foregoing warranty is limited to **repair** or **replacement** at the option of manufacturer of that product which according to the manufacturer's investigation was deemed defective at time of shipment. Damage resulting from neglect, abuse, tampering or misapplication voids this warranty. This warranty is in lieu of all other warranties, expressed or implied, including any warranty of merchantability and/or any and all other obligations or liabilities on the part of the manufacturer.

PN/VU2 REGULATING VALVE

GENERAL PUMP INDUSTRIAL A member of the Interpump Group

PARTS LIST

Pos.	Part Number	Description	Qty.
1	F005300000	Cylinder, Pneumatic	1
2	F070000000	Knob, Adjusting	1
3	F033000010	Nut, Lock	1
4	F074200050	Sleeve, Spring	1
5	F871121306	Screw, Socket Head, M8 x 35	4
6	F062300110	Cover, Valve	1
7	F881010121	O-Ring, 1.732 x .103	1
8	F881030014	Packing, 32 mm	1
9	F084300020	Nipple, By-Pass	1
10	F872110202	Spring, Disc, .323 x .709 x .059	32
11	F025000000	Guide, Spring, Steel	1
12	F811900007	Ball, 5/16", Carbon Steel	1
13	F074200030	Piston, SS AISI 420	1
14	F881010008	O-Ring, .739 x .070, Buna-N	1
15	F083200010	Ball, Piston, SS AISI 420	1
16	F872040100	Washer, M8, Copper	1
17	F871121603	Screw, Socket Head, M8 x 20, SST	1
18	F881030011	Packing, 25 mm, Buna-N	1
21	F060300040	Body, Valve	1
24	F881010120	O-Ring, 1.674 x .103, Buna-N	1
25	F881010116	O-Ring, 1.174 x .103, Buna-N	1
26	F060200010	Body, Check Valve	1
27	F811902017	Ball, 7/8", SS AISI 420 HT	1
28	F090290010	Spring, Check Valve, SS AISI 302	1
29	F881110103	Washer, Flat, 1", Buna-N on Steel Frame	1
30	F021300120	Nipple, Check Valve, Brass OT58	1
31	F081200170	Seat, Valve	1
32	F881010117	O-Ring, 1.299 x .103, Buna-N	1
33	F881110104	Washer, Flat, 1-1/4", Buna-N on Steel Frame	1



Positions Included	N. PCS.	PN/VU2
7, 8, 14, 15, 16, 17, 18, 24, 25, 27, 28, 29, 31, 32, 33	1	F629

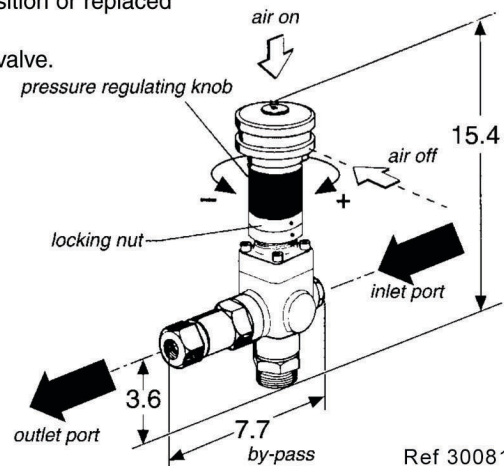
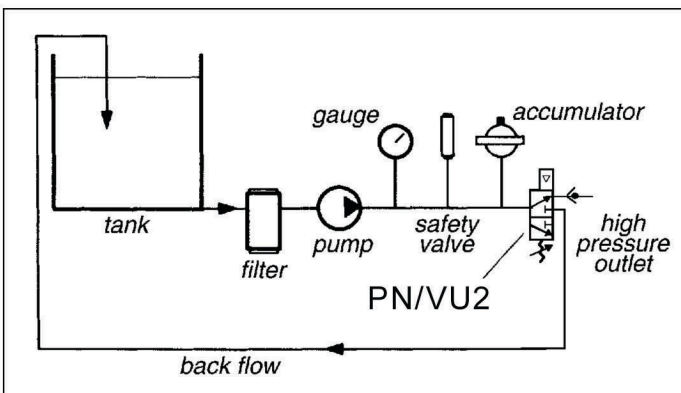
INSTALLATION

The PN/VU2 valve should be mounted on the pressure line in any position, horizontal or vertical, which will allow easy access to the pressure adjusting knob.

The by-pass line should be free from any kind of restriction which may generate back pressures at the valve, it should have an internal diameter of at least 1.6 inches at the narrowest point, and it should not be connected to the pump suction line – see below for correct installation.

The nipple pos. 9 and washer pos.33 should not be removed from their original position or replaced with other than genuine General Pump replacement parts.

The pneumatic cylinder requires air pressure at 90-115 PSI and a 5-way solenoid valve.



Ref 300811 Rev. C
07-05

