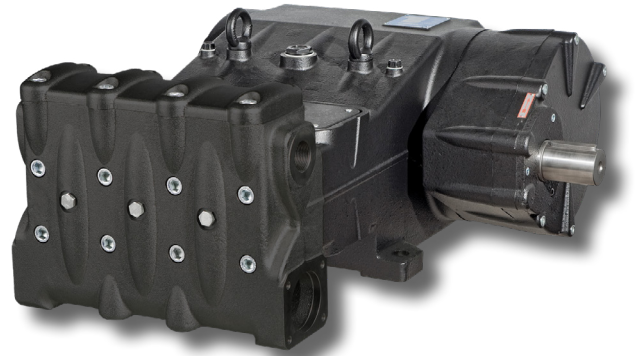


MKS40/45/50 Series

FEATURES

- High pressure, Triplex Plunger Pump, available in 3 flows
- Low-high pressure packing design with integrated cooling system
- High volumetric efficiency suction/delivery valves featuring new spherical design of sealing areas
- Splash lubrication
- Available with external gear box in 1500/1800/2200 RPM, positionable on left or right
- Includes drain/priming valve kit
- Gear Ratios: 1500 RPM=2.23:1, 1800=2.65:1, 2200=3.29:1
- SAE D Hydraulic Drive in 1800 RPM
- SAE C Hydraulic Drive in 2500 RPM



MATERIALS

- Pump body in cast iron
- Manifold made of spheroidal cast iron with HR coating
- Self-adjusting spherical roller bearings on crankshaft
- Forged steel connecting rods with antifriction bearings
- Crankshaft made of nitrited, hardened and tempered alloy steel
- Cast iron plunger guides, nickel treated
- Solid ceramic plungers
- Stainless steel valves

COMMON SPECIFICATIONS

- Maximum Inlet Pressure: 45 PSI
- Maximum Fluid Temperature: *140° F
- Inlet Port Thread: 2" NPT-F
- Discharge Port Thread: 1" NPT-F
- Shaft Diameter (w/gearbox): 2.165"/55 mm
- Stroke: 2.835"/72 mm
- Pump Dimensions: 32.64" x 29.38" x 14.25"
- Crankcase Oil Capacity: 456.5 oz. (13.5 liters)
- (use GP Series 220 Oil)
- Shipping Weight: 833 lbs./378 kg

*Please consult technical guide or GP Sales Representative for Temperature/Inlet Pressure Information.

Product Group: V

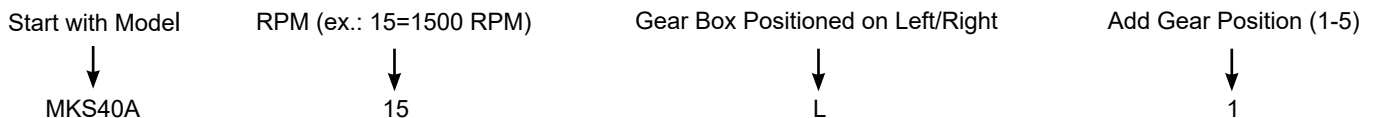
Note: All models come standard with crankshaft on right side (when facing manifold), specify "L" after part number when ordering left hand version.

MODEL	GPM/LPM	PSI/BAR	RPM	BORE	HP
MKS40A	48.2 GPM/182 LPM	5800 PSI/400 BAR	1500/1800/2200 RPM	1.575 in./40 mm	191.0
MKS45A	61.0 GPM/231 LPM	4350 PSI/300 BAR	1500/1800/2200 RPM	1.772 in./45 mm	182.0
MKS50A	75.3 GPM/285 LPM	3600 PSI/250 BAR	1500/1800/2200 RPM	1.969 in./50 mm	187.0

Volumes are theoretical at 100% volumetric efficiency.

How to order/Examples of Part Numbers:

When ordering with gear box:



So the Part Number in the Above Example: **MKS40A15L1**
 (Model is MKS40A, with an RPM of 1500, gear box positioned on left side of pump, in the first position.)

PUMP OPTIONS

- "R" version suitable for recycled water and run dry applications (Max Temp 185° F, not available on MKS40A and MKS45A)
- SAE-J 744-D hollow shaft P.T.O. for direct mount hydraulic drive available on 1800 RPM version only
- SAE-J 744-C hollow shaft P.T.O. for direct mount hydraulic drive available on 2500 RPM version only



General Pump
is a member of
The Interpump Group



Ref 300745 Rev H
01-21



ACCESSORIES

REGULATORS

■ R1

18.5-29.0 GPM
2900-8700 PSI



■ R2

61.0 GPM
3050 PSI



■ RV3

53.0-132.0
GPM
3050-4350 PSI



■ PNR2

61.0 GPM
3050 PSI



■ PN3

79.0-132.0 GPM
2350-4350 PSI



GUNS / LANCES

■ ZP87SSL19/39/19S/39S

15.85 GPM
8700 PSI



■ YG7221/L31-YG7221/51

21.0 GPM
7250 PSI



■ YRL56L

8.0 GPM
5650 PSI



SAFETY DEVICES

■ SV2

50.0 GPM
1450-8700PSI



■ SX2

50.0 GPM
1450-5899 PSI



■ SV3

132.0 GPM
2900-4350 PSI



■ SX3

132.0 GPM
2900-4350 PSI



PULSATION DAMPENERS

■ A7X

16.0 GPM
3050PSI
316 SS



■ A7S

43.0 GPM
2150 PSI



■ A15

105.6 GPM
4750 PSI



■ A15X

105.6 GPM
2150 PSI
316 SS



UNLOADERS

■ RA2

61.0 GPM
3050 PSI



■ RA2L

61.0 GPM
3050 PSI



■ ZKBH3030

29.0 GPM
3050 PSI



■ PN2

61.0 GPM
7250 PSI



MISCELLANEOUS

■ 320001/
320003

3000/5000 PSI
Pressure Gauge



■ 190600

Priming Drain
Valve Kit



■ 639276

125.0 GPM
50/297 Mesh/
Micron Filter

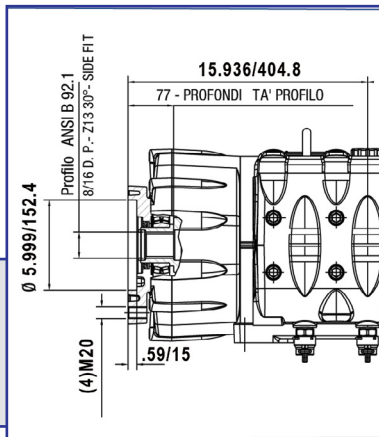
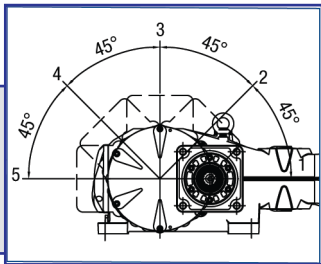
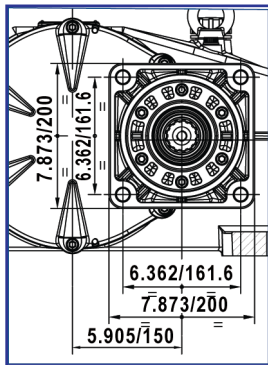


■ 190448


Oil Drain Kit

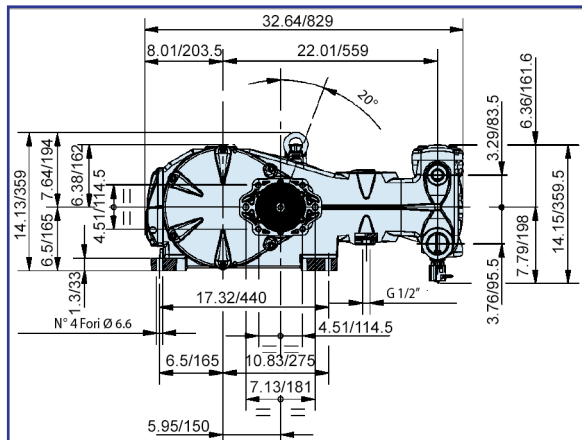
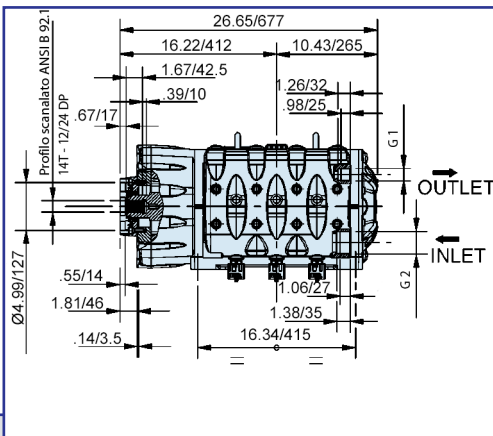


DRIVE OPTIONS

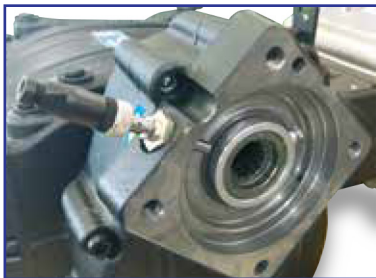


SAE-D 4F 13T 8/16 hydraulic drive

	1:3,73
r.p.m.	2500

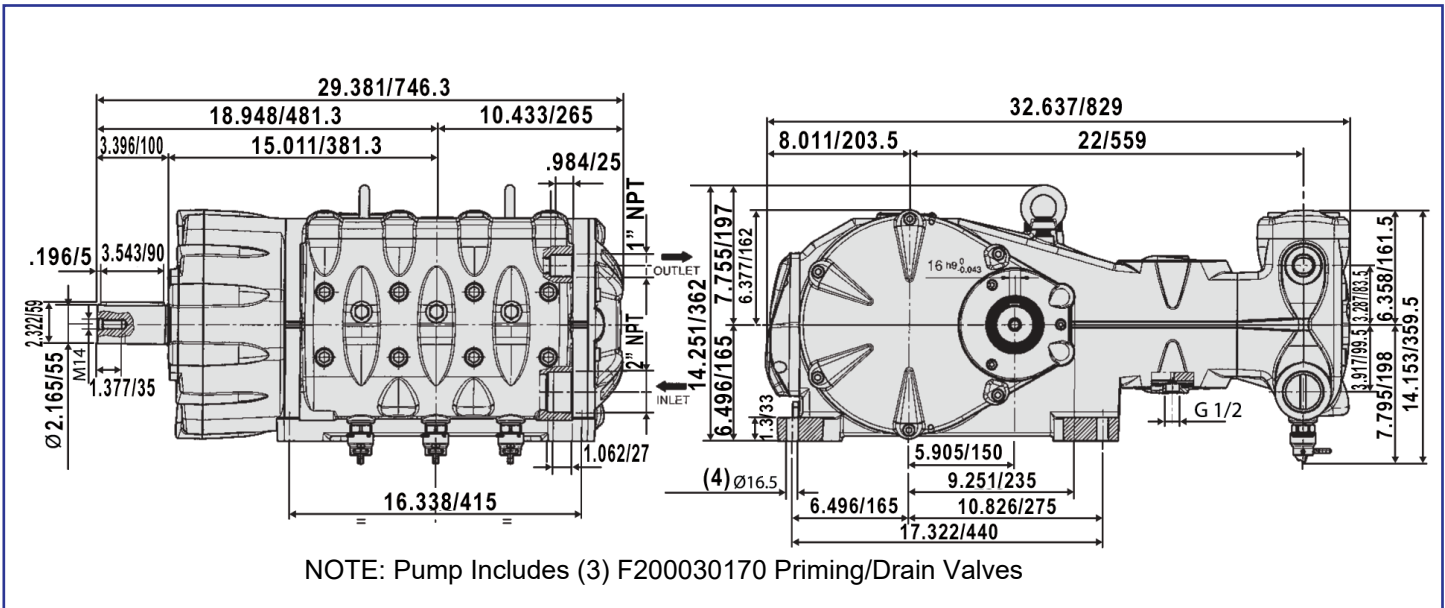


SAE J744-C Spline Shaft
14T 12/24 DP Hydraulic Motor
Mount (2500 RPM only)

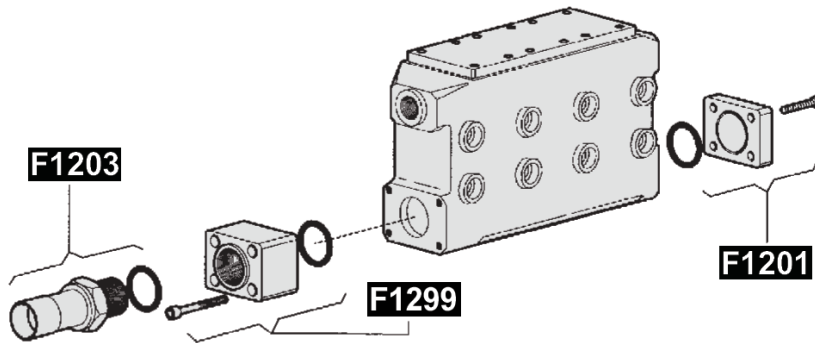


ZRPM1 RPM Counter
Inductive proximity sensor, c/w female connector M12 4 pin, IP67, field attachable, ring nut reduction M18 x 1. Power Supply: 12/24 VDC

OVERALL DIMENSIONS



CONNECTION KITS



F1201	Closed Inlet Flange
F1299	Open Inlet Flange, 3" NPT
F1203	Inlet Hose Fitting, 90 mm

Note: Pump Includes the Following:
 F1201 - Inlet Blank Flange
 F1299 - 3" NPT-F Inlet Flange
 Set of (3) F20030160 Priming/Drain Valves