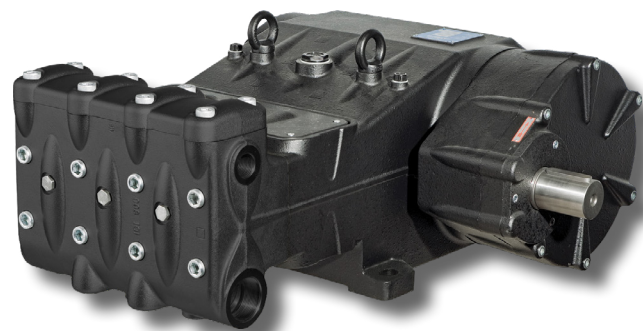


# MK40/45/50 Series

## FEATURES

- High pressure, Triplex Plunger Pump, available in 3 flows
- Low-high pressure packing design with integrated cooling system
- High volumetric efficiency suction/delivery valves featuring new spherical design of sealing areas
- Splash lubrication
- Available with external gear box in 1500/1800 RPM, positionable on left or right
- Includes drain/priming valve kit
- Gear Ratios: 1500 RPM=2.65:1, 1800=3.29:1



## MATERIALS

- Pump body in cast iron
- Manifold made of spheroidal cast iron, with HR coating
- Self-adjusting spherical roller bearings on crankshaft
- Forged steel connecting rods with antifriction bearings
- Crankshaft made of nitrited, hardened and tempered alloy steel
- Cast iron plunger guides, nickel treated
- Solid ceramic plungers
- Stainless steel valves

## COMMON SPECIFICATIONS

- Maximum Inlet Pressure: . . . . . 45 PSI
- Maximum Fluid Temperature: . . . . . \*140° F
- Inlet Port Thread: . . . . . 2" NPT-F
- Discharge Port Thread: . . . . . 1" NPT-F
- Shaft Diameter (w/gearbox): . . . . . 2.165"/55 mm
- Stroke: . . . . . 2.835"/72 mm
- Pump Dimensions: . . . . . 32.64" x 29.38" x 14.25"
- Crankcase Oil Capacity: . . . . . 456.5 oz. (13.5 liters)  
 . . . . . (use GP Series 220 Oil)
- Shipping Weight: . . . . . 833 lbs./378 kg

Product Group: V

\*Please consult technical guide or GP Sales Representative for Temperature/Inlet Pressure Information.

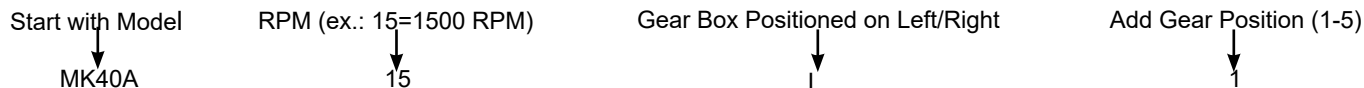
Note: All models come standard with crankshaft on right side (when facing manifold), specify "L" after part number when ordering left hand version.

MODEL	GPM/LPM	PSI/BAR	RPM	BORE	HP
MK40A	40.5 GPM/154 LPM	5800 PSI/400 BAR	1500/1800 RPM	1.575 in./40 mm	160.0
MK45A	51.2 GPM/194 LPM	4350 PSI/300 BAR	1500/1800 RPM	1.772 in./45 mm	151.0
MK50A	63.4 GPM/240 LPM	3600 PSI/250 BAR	1500/1800 RPM	1.969 in./50 mm	156.0

Volumes are theoretical at 100% volumetric efficiency.

How to order/Examples of Part Numbers:

When ordering with gear box:



So the Part Number in the Above Example: **MK40A15L1**  
 (Model is MK40A, with an RPM of 1500, gear box positioned on left side of pump, in the first position.)

## DRIVE OPTIONS

- "R" version suitable for recycled water and run dry applications (available in MK50A only, Max Temp 185° F)
- SAE-J 744-D hollow shaft P.T.O. for direct mount hydraulic drive available (1500 RPM only)



General Pump  
 is a member of  
 The Interpump Group



Ref 300743 Rev E  
 01-21



## ACCESSORIES

### REGULATORS

■ R1

18.5-29.0 GPM  
2900-8700 PSI



■ R2

61.0 GPM  
3050 PSI



■ RV3

53.0-132.0 GPM  
3050-4350 PSI



■ PNR2

61.0 GPM  
3050 PSI



■ PN3

79.0-132.0 GPM  
2350-4350 PSI



### GUNS / LANCES

■ ZP87SSL19/39/19S/39S

15.85 GPM  
8700 PSI



■ YG7221/L31-YG7221/51

21.0 GPM  
7250 PSI



■ YRL56L

8.0 GPM  
5650 PSI



### SAFETY DEVICES

■ SV2

50.0 GPM  
1450-8700PSI



■ SX2

50.0 GPM  
1450-5899 PSI



■ SV3

132.0 GPM  
2900-4350 PSI



■ SX3

132.0 GPM  
2900-4350 PSI



### PULSATION DAMPENERS

■ A7X

16.0 GPM  
3050PSI  
316 SS



■ A7S

43.0 GPM  
2150 PSI



■ A15

105.6 GPM  
4750 PSI



■ A15X

105.6 GPM  
2150 PSI  
316 SS



### UNLOADERS

■ RA2

61.0 GPM  
3050 PSI



■ RA2L

61.0 GPM  
3050 PSI



■ ZKBH3030

29.0 GPM  
3050 PSI



■ PN2

61.0 GPM  
7250 PSI



### MISCELLANEOUS

■ 320001/  
320003

3000/5000 PSI  
Pressure Gauge



■ 190600

Priming Drain  
Valve Kit



■ 639276

125.0 GPM  
50/297 Mesh/Micron  
Filter



■ 190448

Oil Drain Kit

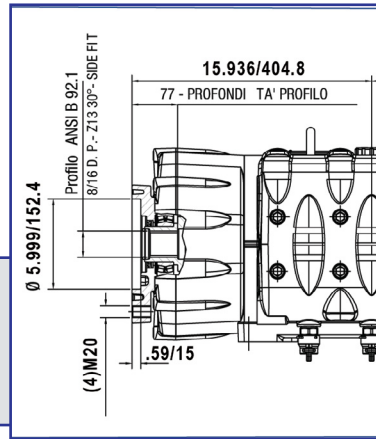
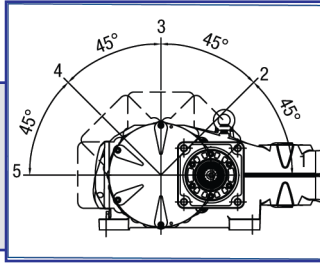
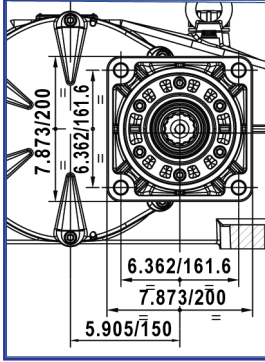


# MK40/45/50 series


## Technical Details

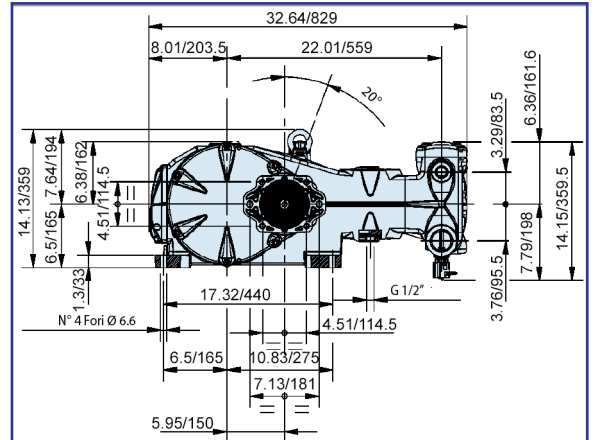
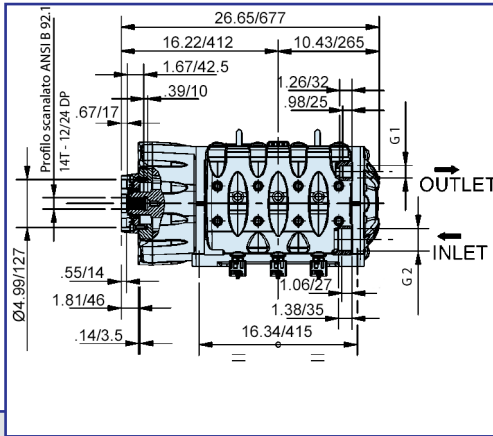


### DRIVE OPTIONS

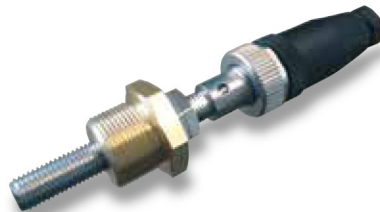


**SAE-D hydraulic drive  
1500 RPM only**

	1:3,73
r.p.m.	2050



**SAE J744-C Spline Shaft  
14T 12/24 DP Hydraulic Motor  
Mount**



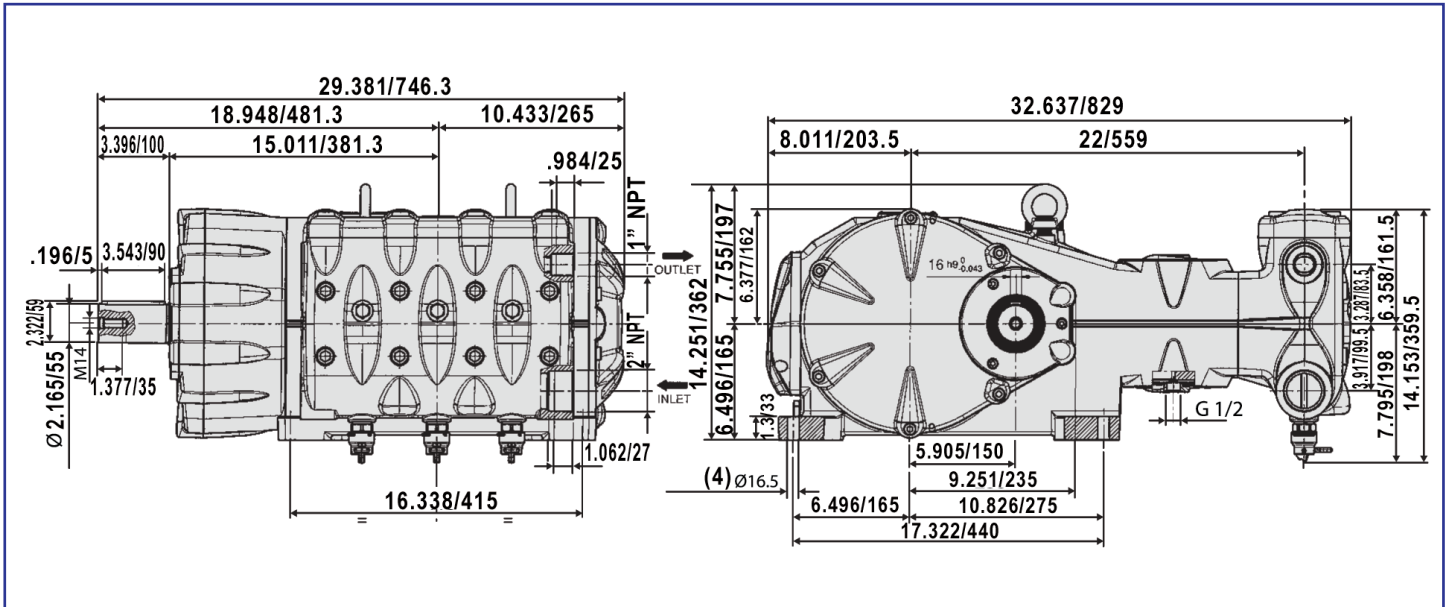
**ZRPM1 RPM Counter**  
Inductive proximity sensor, c/w female connector M12 4 pin, IP67, field attachable, ring nut reduction M18 x 1.  
Power Supply: 12/24 VDC

# MK40/45/50 series

## Technical Details



### OVERALL DIMENSIONS



NOTE: Pump Includes (3) F200030170 Priming/Drain Valves