

# HF22JA (intermittent duty only)

## FEATURES

- Patent-pending, symmetrical power end design featuring top and bottom mounting holes allowing for easy left to right shaft conversion
- Low-high pressure packing design with integrated cooling system
- High volumetric efficiency suction/delivery valves featuring new spherical design of sealing areas
- Splash lubrication
- SAE-C hydraulic drive bell housing and flexible couplers available
- Available with external gear box (direct drive only)
- Features pulsing capability using F10744201 lifting valve (not included)
- Increased oil capacity and anti-splash vent tube for high speed operation



## MATERIALS

- High resistance light alloy die cast crankcase
- 420 Stainless steel manifold, nickel treated
- Taper roller bearings
- Special antifriction, forged, light alloy connecting rods
- Forged alloy steel crankshaft, hardened, tempered and nitrided
- Cast iron piston guide, nickel treated
- Solid ceramic plungers
- Stainless steel valves

## COMMON SPECIFICATIONS

- Maximum Inlet Pressure: ..... 45 PSI
- Maximum Fluid Temperature: ..... \*140° F
- Inlet Port Thread: ..... 1" NPT-F
- Discharge Port Thread: ..... 3/4" NPT-F
- Stroke: ..... 1.969"/50 mm
- Shaft Diameter ..... 1.575"/40 mm
- Crankcase Oil Capacity: ..... 162 oz. (4.8 liters)  
..... (use GP Series 220 Oil)
- Shipping Weight: ..... 132 lbs./60 kg

\*Please consult technical guide or GP Sales Representative for Temperature/Inlet Pressure Information.

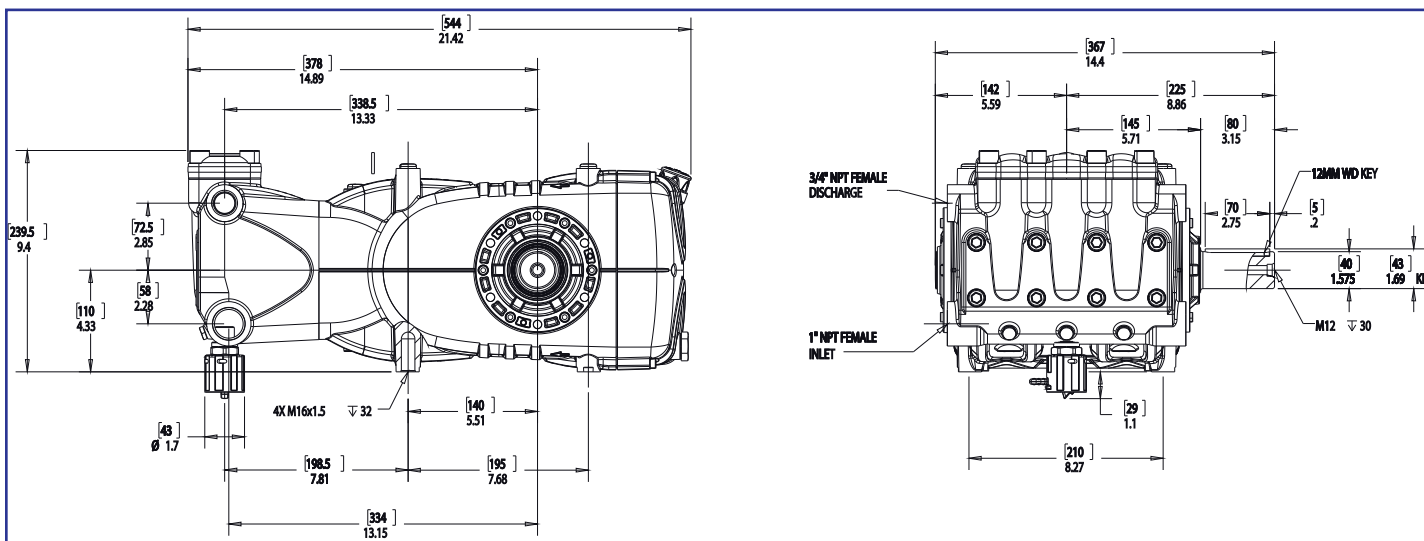
### Product Group: V

Note: All models come standard with crankshaft on right side (when facing manifold), specify "L" after part number when ordering left hand version.

| MODEL  | GPM/LPM           | PSI/BAR          | RPM        | BORE           | HP   |
|--------|-------------------|------------------|------------|----------------|------|
| HF22JA | 19.7 GPM/74.6 lpm | 4000 PSI/276 BAR | 1300 RPM   | .866 in./22 mm | 54.0 |
|        | 19.7 GPM/74.6 lpm | 4000 PSI/276 BAR | 2400 RPM * | .866 in./22 mm | 54.0 |

\*Can be operated with 2400 RPM input using F34207501, 1.83:1 gear reduction

## OVERALL PUMP DIMENSIONS



General Pump  
is a member of  
The Interpump Group



## ACCESSORIES

### REGULATORS

#### ■ R1

18.5-29.0 GPM  
2900-8700 PSI



#### ■ R1X

18.5-29.0 GPM  
2900-8700 PSI  
316 SS



#### ■ ZKSX1

16.0 GPM  
3600 PSI  
316 SS



#### ■ YVS280SS

21.0 GPM  
4500 PSI



#### ■ PN2

61.0 GPM  
7250 PSI  
Pneumatic



#### ■ YRVPP26SS

21.0 GPM  
4500 PSI



### GUNS / LANCES

#### ■ ZP87SSL19/39/19S/39S

15.85 GPM  
8700 PSI



#### ■ YG7221/L31-YG7221/51

21.0 GPM  
7250 PSI



#### ■ YRL56L

8.0 GPM  
5650 PSI



### SAFETY DEVICES

#### ■ SV2

50.0 GPM  
1450-8700PSI



#### ■ S1510

5.2-26.4 GPM  
6960 PSI



#### ■ ZKS3

2.6-26.4 GPM  
0-10150 PSI



#### ■ 100984

6.0-10.0 GPM  
4500 PSI



### PULSATION DAMPENERS

#### ■ A4X

16.0 GPM  
3050PSI



#### ■ A7S

43.0 GPM  
4750 PSI



#### ■ 686028

10.0 GPM  
3000 PSI  
Rechargeable



#### ■ 686011

6.0-10.0 GPM  
4500 PSI  
Non-  
Rechargeable



### UNLOADERS

#### ■ RA2

61.0 GPM  
3050 PSI



#### ■ ZKX600

16.0 GPM  
8700 PSI



#### ■ ZK7216SS

15.85 GPM  
7200 PSI



#### ■ ZK5813

2.11-13.2 GPM  
5800 PSI



### MISCELLANEOUS

#### ■ F10744201

Flip Valve



#### ■ 320001/ 320004

3000/20000 PSI  
Pressure  
Gauge



#### ■ HX Nozzle

Up to 30 GPM  
up to 4000 PSI  
Excavating Nozzle



#### ■ 639273

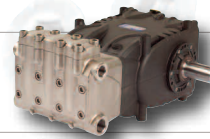
55.0 GPM  
50/297  
Mesh/Micron  
Filter



#### ■ 190448

Oil Drain Kit

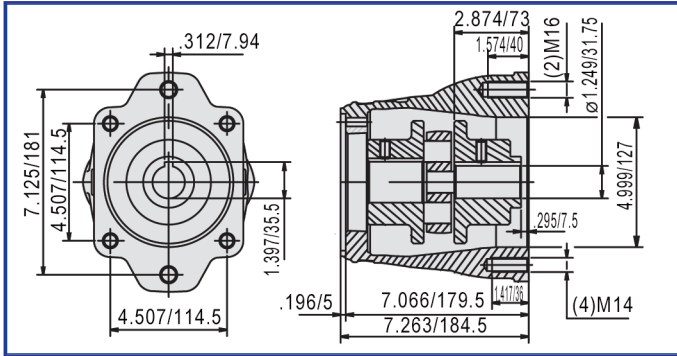




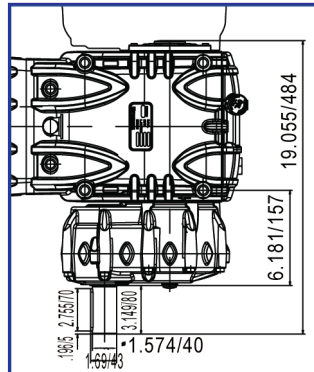
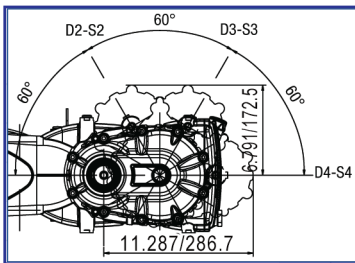
# HF22JA

Technical Details

## DRIVE OPTIONS

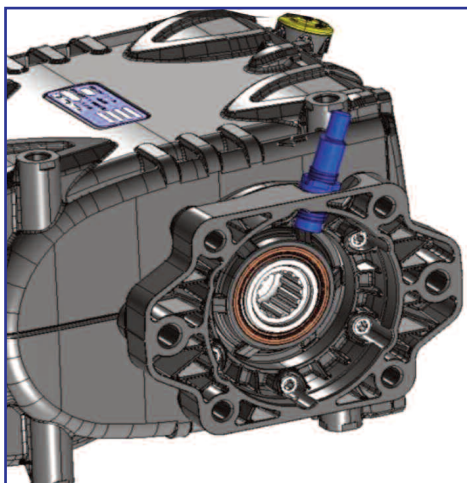
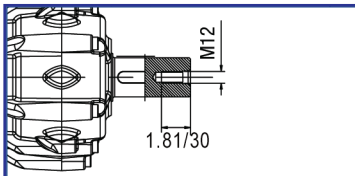


**SAE-J 744 C hydraulic bell housing and flexible coupler.**



**Gearbox**

HF pumps can be supplied with an optional gearbox available in 3 different ratios. The gearbox can be mounted on the left or right side of the pump in 4 different angles, at your choice. Gearbox ratios: R=1.125:1, R=1.50:1, R=1.83:1



**SAE C 2-4F 14T 12/24 DP**

Hollow shaft version with 8 mm tachometer port

Ref 310037 Rev A  
07-16

