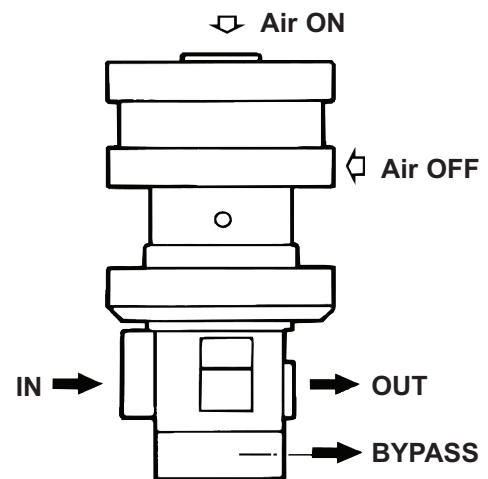
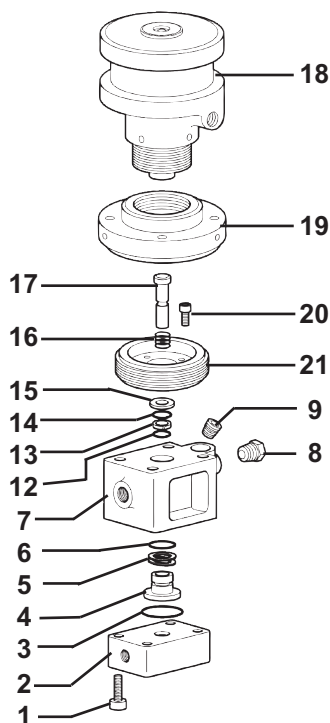


**GENERAL PUMP***A member of the Interpump Group***FPN12****Industrial Pneumatic Valve****SPECIFICATIONS**

<b>Part Number</b>	FPN12
<b>Flow</b>	21.0 GPM
<b>Maximum Pressure</b>	17,400 PSI
<b>Ports Sizes:</b>	
Inlet	3/8" BSP-F
Outlet	3/8" BSP-F
Bypass	3/8" BSP-F
<b>Dimensions</b>	9.7" x 4.43" x 4.43"
<b>Weight</b>	14.5 lbs.
<b>Materials</b>	Stainless Steel

**FEATURES**

- A normally open dumping valve, pneumatically operated, used for automatic cycles and remote controls.
- When air pressure is released, it opens the bypass line, thus eliminating high pressure in the system.
- The double-effect pneumatic cylinder allows smooth operation without hydraulic shock.

**PARTS LIST**

No.	Part Number	Description	Qty.
1.	F035000020	Upper Body Screw	4
2.	F060200070	Upper Valve Body	1
3.*	F881012206	O-ring, Ø 29.75 x 3.53	1
4.*	F081200280	Valve Seat	1
5.*	F881112000	Anti-extrusion Ring	1
6.*	F881012106	O-ring, Ø 15.08 x 2.62	1
7.	F060200030	Valve Body	1
8.	F084200030	Cap, 3/8" G, Conical	1
9.	F821210009	Cap, 1/2" G, Conical	1
12.*	F881012001	O-ring, Ø 6.07 x 1.78	1
13.*	F010500300	Anti-extrusion Ring	1
14.*	F881011002	O-ring, Ø 10 x 1.5	1
15.	F010200030	Washer	1
16.*	F090200110	Spring	1
17.*	F083200100	Control Rod	1
18.	F005300000	Pneumatic Cylinder	1
19.	F012200000	Cylinder Holder	1
20.	F871121603	Screw, TCEI, M8 x 20 INOX	4
21.	F010200090	Flange	1
*	F1250	Repair Kit	



General Pump  
is a member of  
the Interpump Group



GENERAL PUMP

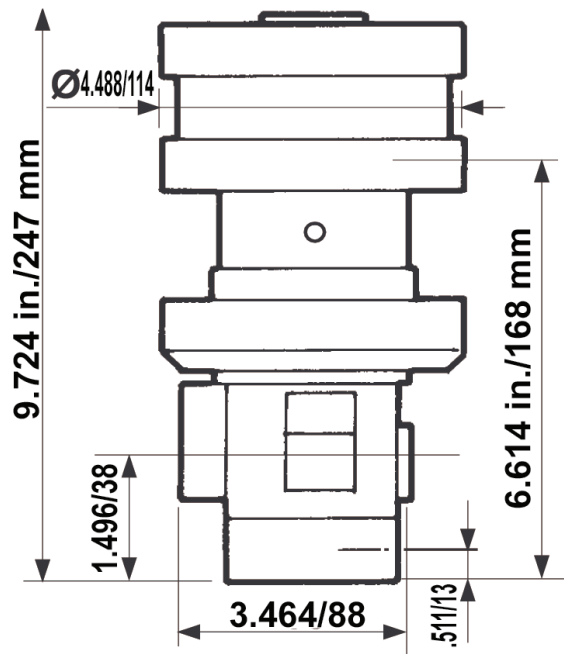
# FPN12 Pneumatic Valve

## INSTALLATION INSTRUCTIONS

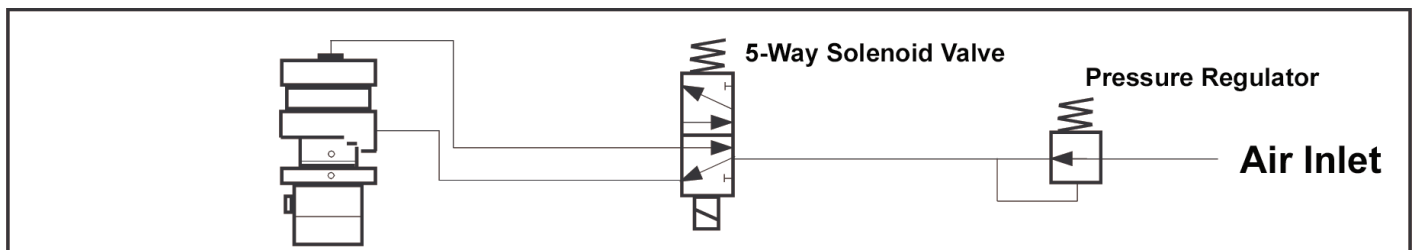
The FPN12 pneumatic valve should be installed on the pressure line in any position (horizontal or vertical).

Installation can be in-line (3 ways) or by a T-joint (2 ways). A high pressure plug is supplied with the valve for a 2-way installation, to be removed in case of a 3-way installation.

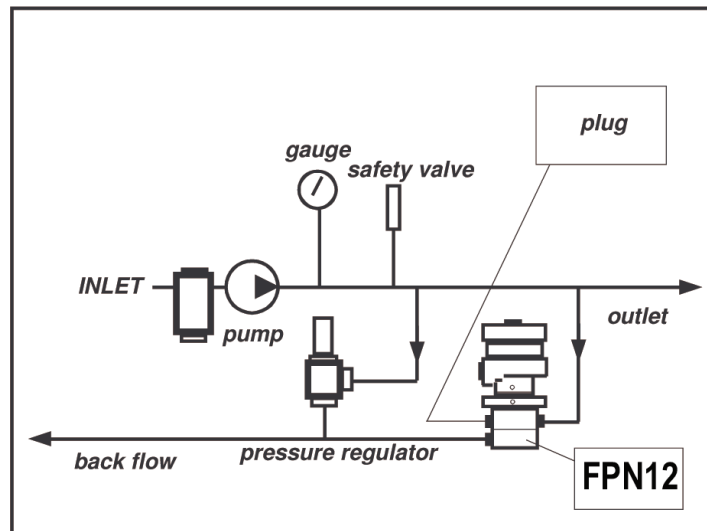
Air Pressure Required: 90 - 120 PSI



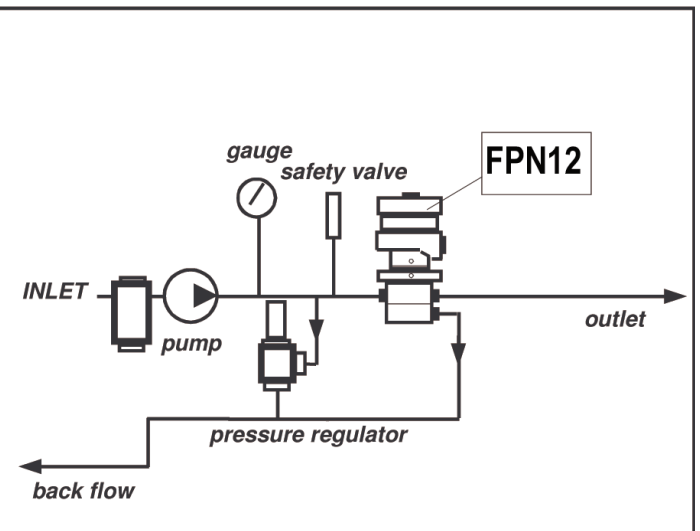
### Air System Schematic



### 2-Way Installation



### 3-Way Installation



Ref 300750 Rev. A  
03-10