



GENERAL PUMP



HOSE REELS

www.generalspump.com • 888.474.5487

Semi-Professional Hose Reels



Features and Specifications

- Direct hand-crank rewind with pin lock
- Solid steel construction
- Durable black powder coated finish
- Brass swivel with Stainless Steel internal stem
- Hardware provided for mounting to cart handle or bumper

Model	3/8" Cap.	PSI	Bar	Max Temp	Inlet	Outlet	Weight	Pallet Qty.
D30001	50'	4,000	276	225° F	3/8" NPT-F	3/8" NPT-F	8.8 lbs.	72
D30002	100'	4,000	276	225° F	3/8" NPT-F	3/8" NPT-F	11.0 lbs.	54
D30004	150'	4,000	276	225° F	3/8" NPT-F	3/8" NPT-F	17.6 lbs	42
D30006	200'	4,000	276	225° F	3/8" NPT-F	3/8" NPT-F	15.9 lbs	28

Professional Hose Reels



Features and Specifications

- Direct hand-crank rewind with pin lock
- Solid steel construction with one-piece welded drum
- Durable black powder coated finish
- 5000 PSI rated forged swivel

Model	3/8" Cap.	PSI	Bar	Max Temp	Inlet	Outlet	Weight	Pallet Qty.
DHR50100	100'	5,000	345	300° F	3/8" NPT-M	3/8" NPT-F	17.6 lbs.	45
DHR50150	150'	5,000	345	300° F	3/8" NPT-M	3/8" NPT-F	18.7 lbs.	30

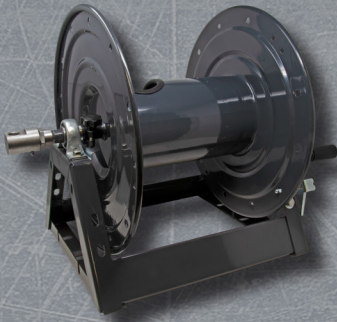


Features and Specifications

- Full flow swivel
- Includes drum pin-lock and friction brake
- Durable high-gloss powder coated finish
- One-piece welded drum
- Direct hand-crank rewind with locking pin

Model	3/8" Cap.	PSI	Bar	Max Temp	Inlet	Outlet	Weight	Pallet Qty.
DHRWM50200	200'	4,000	276	225° F	1/2" NPT-F	3/8" NPT-F	15 lbs.	30

Industrial Hose Reels

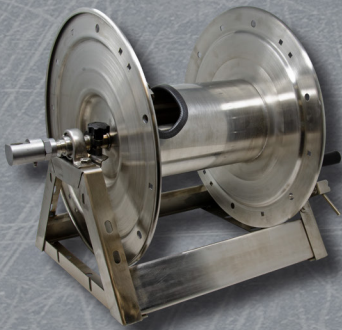


Features and Specifications

- All stainless steel 5,000 PSI swivel w/ internal ball bearings
- HD steel welded frame and HD sealed axle bearings
- Durable powder coated finish
- Stainless steel assembly hardware
- Drum pin-lock and friction brake
- One-piece welded drum
- Reversible swivel/handle
- Comes with (2) 1/2" to 3/8" adapters

Model	3/8" Cap.	PSI	Bar	Max Temp	Inlet	Outlet	Weight	Pallet Qty.
DHRA50150	150'	5,000	345	250° F	1/2" NPT-F	1/2" NPT-F	36.46 lbs.	24
DHRA50300	300'	5,000	345	250° F	1/2" NPT-F	1/2" NPT-F	41.97 lbs.	16
DHRA50450	450'	5,000	345	250° F	1/2" NPT-F	1/2" NPT-F	47.60 lbs	16

Stainless Steel Industrial Hose Reels



Features and Specifications

- Heavy duty stainless steel construction
- Stainless steel 5,000 PSI swivel w/ internal ball bearings
- HD steel welded frame and HD sealed axle bearings
- Stainless steel assembly hardware
- Drum pin-lock and friction brake
- One-piece welded drum
- Reversible swivel/handle
- Comes with (2) 1/2" to 3/8" adapters

Model	3/8" Cap.	PSI	Bar	Max Temp	Inlet	Outlet	Weight	Pallet Qty.
DHRA50150SS	150'	5,000	345	250° F	1/2" NPT-F	1/2" NPT-F	36.46 lbs.	24
DHRA50300SS	300'	5,000	345	250° F	1/2" NPT-F	1/2" NPT-F	41.97 lbs.	16
DHRA50450SS	450'	5,000	345	250° F	1/2" NPT-F	1/2" NPT-F	47.60 lbs	16

Hand Carry Hose Reels



Features and Specifications

- Holds up to 150' of 1/4" hose, or 100' of 3/8" hose
- 5,000 PSI rated swivel
- Durable powder coat on reel
- Stainless steel hand carry base
- Stainless steel assembly hardware

Model	3/8" Cap.	PSI	Bar	Max Temp	Inlet	Outlet	Weight	Pallet Qty.
DHRHC50100	100'	5,000	345	250° F	3/8" NPT-M	3/8" NPT-F	23.35 lbs.	20

Pedestal Hose Reels



Features and Specifications

- 5,000 PSI rated swivel
- Durable powder coat on reel
- HD pedestal stand - mount on wall, workbench, pressure washer
- One-piece welded drum

Model	3/8" Cap.	PSI	Bar	Max Temp	Inlet	Outlet	Weight	Pallet Qty.
DHRP50100	150'	5,000	345	300° F	3/8" NPT-M	3/8" NPT-F	30.86 lbs.	24

Garden Hose Reels



Features and Specifications

- 5,000 PSI rated swivel
- Durable powder coat on reel
- HD pedestal stand - mount on wall, workbench, pressure washer
- One-piece welded drum

Model	5/8" Cap.	PSI	Bar	Max Temp	Inlet	Outlet	Weight	Pallet Qty.
DHRGH150	150'	100	6.89	300° F	3/8" GH-F	3/8" GH-M	30.86 lbs.	24

Trailer Mount Hose Reels



Features and Specifications

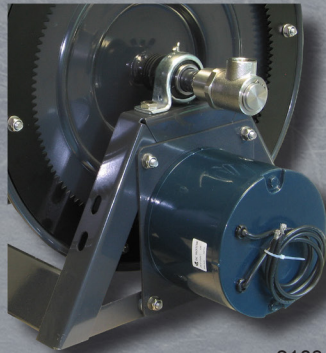
- Full flow stainless steel swivel
- Durable high-gloss black powder coated finish
- 180° pivoting hose guide
- One-piece welded drum
- Direct hand-crank rewind with locking pin
- Robust folding handle

Model	5/8" Cap.	PSI	Bar	Max Temp	Inlet	Outlet	Weight	Pallet Qty.
DHRTM50100	100'	5,000	345	250° F	1/2" NPT-F	1/2" NPT-F	33.0 lbs.	16
DHRTM50200	200'	5,000	345	250° F	1/2" NPT-F	1/2" NPT-F	33.0 lbs.	16

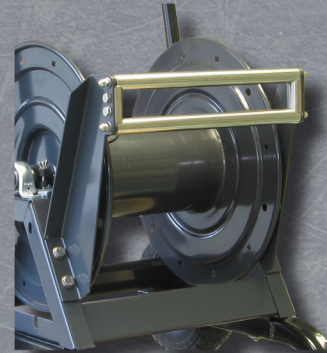
DHRA Series Hose Reel Accessories



DMC12V



2103410*



2100463*



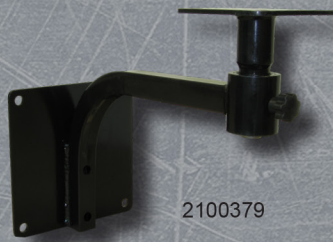
2100465*



2100437*

Model	Description
DMC12V	Kit, 12 Volt DC, 30 AMP variable speed controller rewind
2103410	Power rewind kit, 12 Volt motor kit for A-frame hose reels, included motor, hardware and gear
2100465	Kit, Cart DHRA hose reels
2100462	Kit, Hose guide, Protects hose when hose is pulled, fits DHRA50150
2100463	Kit, Hose guide, Protects hose when hose is pulled, fits DHRA50300
2100503	Kit, Hose guide, Protects hose when hose is pulled, fits DHRA50450
2100462SS	Kit, Hose guide, Stainless steel, Protects hose when hose is pulled, fits DHRA50150SS
2100463SS	Kit, Hose guide, Stainless steel, Protects hose when hose is pulled, fits DHRA50300SS
2100503SS	Kit, Hose guide, Stainless steel, Protects hose when hose is pulled, fits DHRA50450SS
2100437	Kit, Hose reel stacking kit, fits DHRA hose reels, Stacks up to 4 high
2100437SS	Kit, Hose reel stacking kit, Stainless steel, fits DHRASS hose reels, Stacks up to 4 high
* NOTE: Hose reels sold separately	

Other Hose Reel Accessories



2100379



DHRUM



DHRFM



2100531



2100580



2100375

Model	Description
DHRUM	Universal mounting kit for DHRTM50100 and DHRTM50200
DHRFM	Flat-based base mount for DHTRM50100 and DHRTM50200
2100375	Kit, Cart for D3000 and DHR hose reels
2100379	Kit, Wall mount with swivel plate for D3000 and DHR hose reels
2100531	Kit, Wall mount kit for D3000 and DHR hose reels
2100580	2-piece collapsible frame only. Works with D30001, 2, 4, 6, DHR50100, DHR50150 and DHRHC50100



GP Companies, Inc

1174 Northland Drive, Mendota Heights, MN 55120

Phone: 651.686.2199 Fax: 800.535.1745

www.generalpump.com email: sales@gpcompanies.com

facebook.com/gpcompanies

youtube.com/user/GeneralPump



General Pump is part of the Interpump Group, the world leader in plunger pumps.