

DGE4012W
Rear Inlet Spray Gun




SPECIFICATIONS

Part Number:	DGE4012W	
Maximum Volume:	12.0 GPM	
Maximum Pressure:	4000 PSI	
Maximum Temperature:	250° F	
Port Sizes:	Inlet Outlet	3/8" NPT-F 1/4" NPT-F
Dimensions:	9.5" x 5.25" x 1.2"	
Weight:	1.0 lbs.	
Material:	Brass, Stainless Steel, Plastic	
REPAIR KIT - DGE4012W	2103275	

FEATURES

- Economic design with brass inlet and outlet
- All flow passages designed for minimum pressure drop - maximum flow
- Large comfortable hand grip to accommodate work gloves
- Additional venting for excellent high temperature performance
- Durable glass-filled housing
- Trigger made from 30% glass filled Nylon 6.6

Ref 300978 Rev A
08-15

 General Pump
is a member of
the Interpump Group

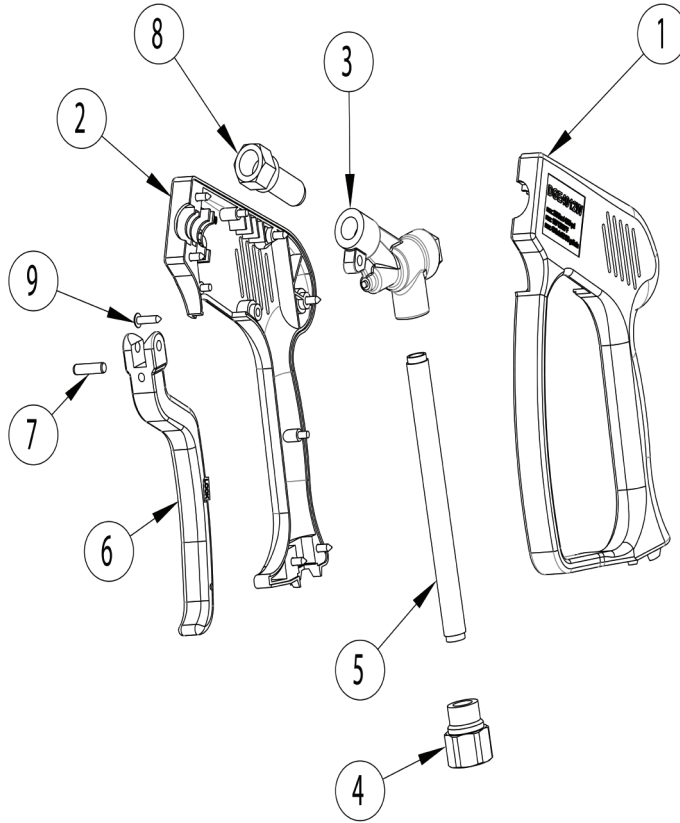


DGE4012W

Rear Inlet Spray Gun

GENERAL PUMP *A member of the Interpump Group*

PARTS LIST



POS.	PART NUMBER	DESCRIPTION	QTY.
1	2660308	HOUSING, GUN, LEFT	1
2	2660300	HOUSING, GUN, RIGHT	1
3	2103275	INSERT, GUN	1
4	2510230	FITTING, INLET, GUN	1
5	2550188	TUBE, INLET, GUN	1
6	2103277	ASSY, SUB, TRIGGER, GUN	1
7	2520132	PIN, TRIGGER	1
8	2510240	FITTING, OUTLET, GUN	1
9	2200065	SCREW	7

Ref 300978 Rev A
08-15

GENERAL PUMP • 1174 Northland Drive • Mendota Heights, MN 55120
Phone: 651.686.2199 • Fax: 800.535.1745 • email: sales@gpcompanies.com • www.generalpump.com

