

GENERAL PUMP *A member of the Interpump Group*

DG4000 / W
Rear Inlet Spray Gun



SPECIFICATIONS

Part Number:	DG4000 / DG4000W	
Maximum Volume:	8.0 GPM	
Maximum Pressure:	4000 PSI	
Maximum Temperature:	250° F	
Port Sizes:	Inlet	3/8" NPT-F
	Outlet	1/4" NPT-F
Dimensions:	9.5" x 5.25" x 1.2"	
Weight:	1.0 lbs.	
Material:	Brass, Stainless Steel, Plastic	
REPAIR KIT - DG4000	2100261	
REPAIR KIT - DG4000W	2100305	

FEATURES

- Economic design with brass inlet and outlet
- All flow passages designed for minimum pressure drop - maximum flow
- Large comfortable hand grip to accommodate work gloves
- Additional venting for excellent high temperature performance
- Durable glass-filled housing
- Trigger made from 30% glass filled Nylon 6.6



General Pump is a member of the Interpump Group



Ref 300753 Rev C
 01-19

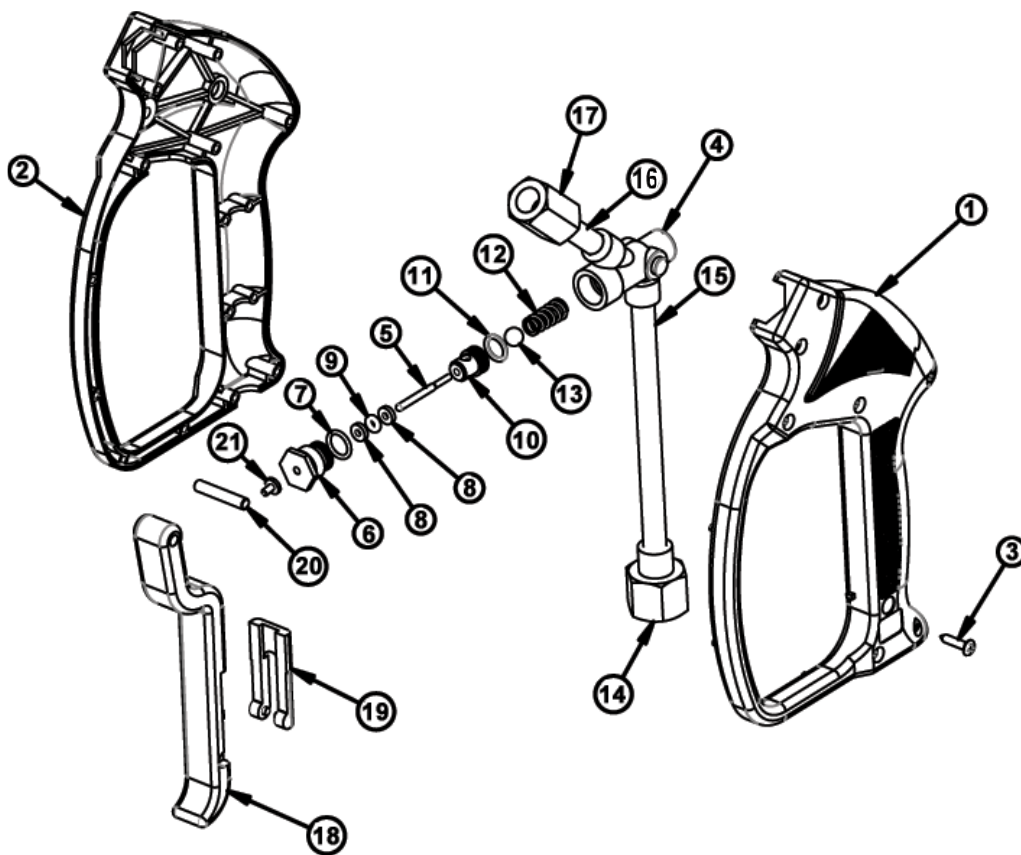


DG4000 / W

Rear Inlet Spray Gun

GENERAL PUMP *A member of the Interpump Group*

PARTS LIST



No.	Part No.	Description	Qty.
1	2660117	Housing, Gun	1
2	2660118	housing, Gun	1
3	2550065	Screw	7
4	2452012	Forging	1
5	2520063	Pin, Gun	1
6	2510008	Plug	1
7	2701013	O-ring	1
8	2660029	Ring, Backup	2
9	2701048	O-ring	1
10	2520006	Seat, (DG4000)	1
	2520207	Seat, (DG4000W)	1
11	2701002	O-ring	1
12	2720002	Sspring	1

No.	Part No.	Description	Qty.
13	2520004	Ball	1
14	2510026	Fitting, Inlet, 3/8" NPT-F	1
15	2520005	Tube, Inlet	1
16	3660062	Tube, Outlet	1
17	2510095	Fitting, Outlet	1
18	2660111	Trigger (DG4000)	1
	2660206	Trigger (DG4000W)	1
19	2660026	Trigger, Lock	1
20	3630012	Pin, Trigger	1
21	2520010	Striker	1
*	2100261	Repair Kit (DG4000)	
*	2100305	Repair Kit (DG4000W)	