

GENERAL PUMP *A member of the Interpump Group***DCG5010**
Compensating Rear Inlet Spray Gun**SPECIFICATIONS**

Part Number	DCG5010	
Max Volume	10.5 GPM	
Max Pressure	5,000 PSI	
Max Temperature	320° F	
Port Size	Inlet	3/8" NPT-F
	Outlet	1/4" NPT-F
Dimensions	9.5" x 5.5" x 1.5"	
Weight	1.5 lbs.	
Materials	Brass, Stainless Steel, Plastic, Viton	
Repair Kit	2100249	

FEATURES

- Exclusive patent-pending GP design
- Unique design compensates for changes in pressure
- Trigger designed for low fatigue
- Allows for continued use without tiring hand
- All flow passages designed for minimum pressure drop - maximum flow
- Fluorocarbon seals for maximum high temperature performance
- Large comfortable hand grip to accommodate work gloves
- Additional venting for excellent high temperature performance
- Durable glass-filled housing and trigger in Zytel (high tech nylon)



General Pump
is a member of
the Interpump Group



Ref 300667 Rev C
02-19

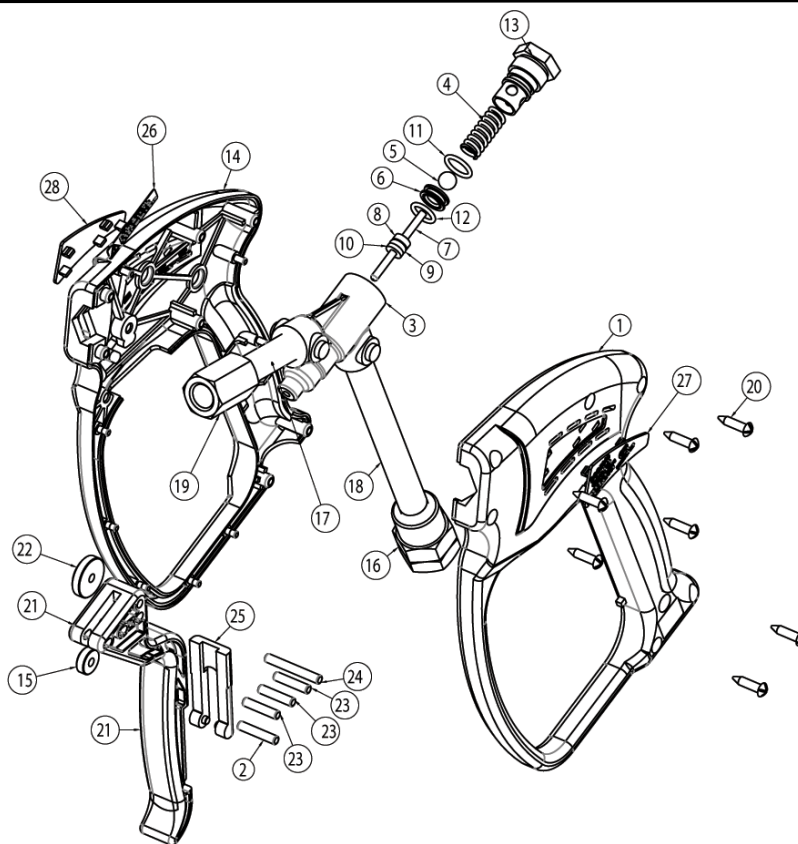


DCG5010

Compensating Rear Inlet Spray Gun

GENERAL PUMP *A member of the Interpump Group*

PARTS LIST



No.	Part No.	Description	Qty.
1	2660387	Housing, Gun	1
2	2510157	Pin, Trigger	1
3	2452011	Forging, Gun	1
4	2720001	Spring	1
5	2520004	Ball	1
6	2520085	Seat, Gun	1
7	2520084	Pin, Forging	1
8	2510004	Washer, Brass	1
9	2701048	O-ring	1
10	2710018	Washer, Brass	1
11	2101049	O-ring	1
12	2701045	O-ring	1
13	2510156	Plug, Gun	1
14	2660388	Housing, Gun	1

No.	Part No.	Description	Qty.
15	2520087	Roller	1
16	2510003	Fitting, Inlet, Gun	1
17	2550049	Tube, Outlet	1
18	2550048	Tube, Inlet	1
19	2510081	Fitting, Outlet	1
20	2200002	Screw	7
21	2660391	Trigger	1
22	2520086	Roller, Trigger	1
23	2520088	Pin, Trigger	3
24	2510158	Pin, Trigger	1
25	2660285	Trigger, Lock	1
26	2400166	Lable, Prop 65	1
27	2660390	Insert, Gun, Left	1
28	2660389	Insert, Gun, Right	1

Repair Kit 2100249			
No.	Part No.	Description	Qty.
1	2720001	Spring	1
2	2520004	Ball	1
3	2520085	Seat, Gun	1
4	2520084	Pin, Forging	1
5	2510004	Washer, Brass	1
6	2701048	O-ring	1
7	2710018	Washer, Teflon	1
8	2701045	O-ring	1
9	2701049	O-ring	1

