

FEATURES

3 way flow-through design pressure regulator with by-pass lever and automatic unloading

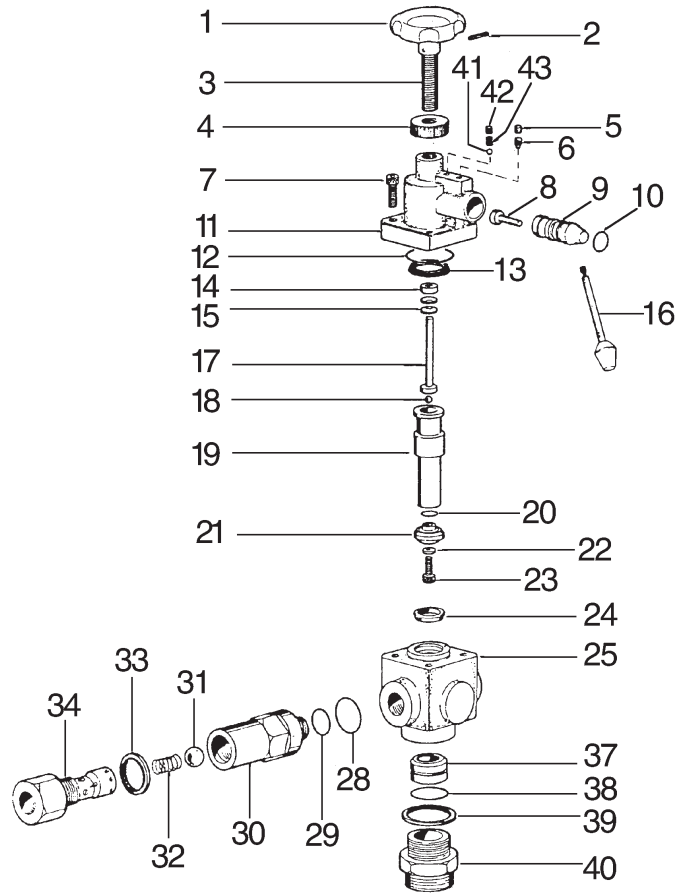
- Regulates operating pressure of the system by releasing excess volume through the by-pass.
- Adjusted pressure can be set ON or OFF using the by-pass lever.
- Allows off-load pump start up.
- Protects the system from overpressurization.
- Suitable for controlling several units at the same time.

SPECIFICATIONS

Part Number	AL2
Maximum Volume	48 GPM
Maximum Pressure	2900 PSI
Port Sizes: Inlet	1 – 11 BSPP
Outlet	3/4 – 14 BSPP
By-pass	1-1/2 – 11 BSPP
Weight	12.3 lb.
Material: Upper Valve Body	OT58 Brass
Lower Valve Body	OT58 Brass
Valve Seat	AISI 431 s.s.
Valve	AISI 420 s.s. with Stellite

PARTS LIST

Pos.	Part Number	Description	Qty.
1	F003500000	Knob, Regulating	1
2	F872139012	Pin, Spring, .118 x .984	1
3	F072200010	Screw, Adjusting	1
4	F033000000	Nut, Lock	1
5	F871234302	Screw, Set, M6 x 10	1
6	F871235303	Screw, Set, M6 x 12	1
7	F871121306	Screw, Cap, Socket Head, M8 x 35	4
8	F002000020	Pin	1
9	F002000010	Pivot, Eccentric	1
10	F881010110	O-Ring, .797 x .103	1
11	F062300080	Cover, Valve	1
12	F881010121	O-Ring, 1.737 x .103	1
13	F881030014	Packing, 1.260	1
14	F031300090	Spacer	1
15	F872110202	Spring, Disc, .323 x .709 x .059	32
16	F801066001	Lever	1
17	F025000000	Support, Spring, Steel	1
18	F811900007	Ball, .312, Carbon Steel	1
19	F074200020	Piston, SS AISI 420	1
20	F881010008	O-Ring, .739 x .070, Buna-N	1
21	F083200010	Ball, Piston, SS AISI 420	1
22	F872040100	Washer, Lock, M8, Copper	1
23	F871121603	Screw, Cap, Socket Head, M8 x 20, SST	1
24	F881030011	Packing, .984, Buna-N	1
25	F060300040	Body, Valve	1
28	F881010120	O-Ring, 1.674 x .103, Buna-N	1
29	F881010116	O-Ring, 1.174 x .103, Buna-N	1
30	F060200010	Body, Check Valve	1
31	F811902017	Ball, .875, SS AISI 420 HT	1
32	F090290010	Spring, Check Valve, SS AISI 302	1
33	F881110103	Washer, 1", Buna-N on Steel Frame	1
34	F021300120	Nipple, Check Valve, Brass OT58	1
37	F081200170	Seat, Valve, SS AISI 431	1
38	F881010117	O-Ring, 1.300 x .103, Buna-N	1
39	F881110104	Washer, 1.25", Buna-N on Steel Frame	1
40	F084300020	Nipple, Valve Seat	1
41	F811900005	Ball, .250	1
42	F871240301	Screw, Set, M8 x 8, Carbon Steel	1



Positions Included	N. PCS.	AL2
10, 12, 13, 20, 21, 22, 23, 24, 28, 29, 31, 32, 33, 37, 38, 39	1	F1243

INSTALLATION

The AL2 valve can be mounted on the pressure line in any position (horizontal or vertical) which will allow easy access to the pressure adjusting knob and by-pass lever. The by-pass line should be free from any kind of restriction which may generate back pressures at the valve, should have an internal diameter of at least 1.5 inches at any point, and should not be connected to the pump suction line (see below for correct installation).

The nipple pos. 40 and washer pos. 39 should not be removed from their original position or replaced with other than genuine General Pump replacement parts.

