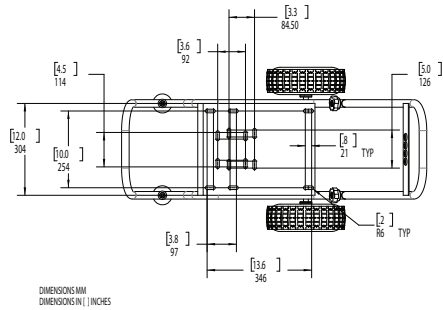
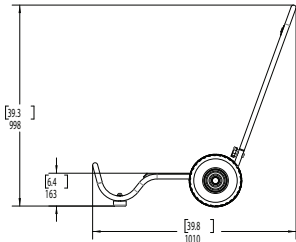


DIMENSIONS

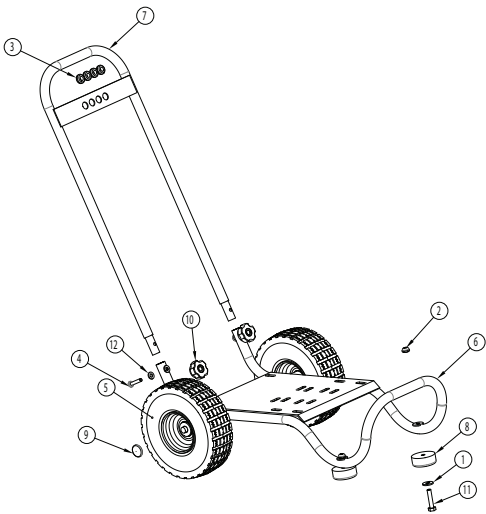


DIMENSIONS MM
DIMENSIONS IN | INCHES



EXPLODED VIEW AND PARTS

Pos.	Part #	Description	QTY
1	2200035	WASHER, M10	4
2	2200033	NUT, M10	2
3	2700001	GROMMET	4
4	2200021	BOLT, PAN HEAD, M8	2
5	DF80052	WHEEL, 10"	2
6	2550162	BASE, CART	1
7	2550163	HANDLE, CART	1
8	2700016	FOOT, CART	2
9	2640023	CAP, AXLE	2
10	2660267	KNOB, CART	2
11	2200101	BOLT, M10 X 50	2
12	2200044	WASHER, M8, FLAT,	4



General Pump

1174 Northland Drive • Mendota Heights, MN 55120

Phone: 651.686.2199 • Fax: 800.535.1745

www.generalpump.com • email: sales@gpcompanies.com

Ref 310075 Rev. A

07-17

* Hose Reel
Not Included



INDUSTRIAL HOSE REEL CART KIT

From General Pump

2100375

- For all General Pump's DHR and D3000 Hose Reels
- Convert your General Pump hose reel into a hose reel cart
- Makes storage and moving of your fully loaded hose reel easy
- Stainless steel hardware
- Powder coated steel frame
- Unique design
- Solid Polyurethane wheels will never go flat

Instruction Manual

Ref 310075 Rev. A
07-17



General Pump
is a member of
The Interpump Group

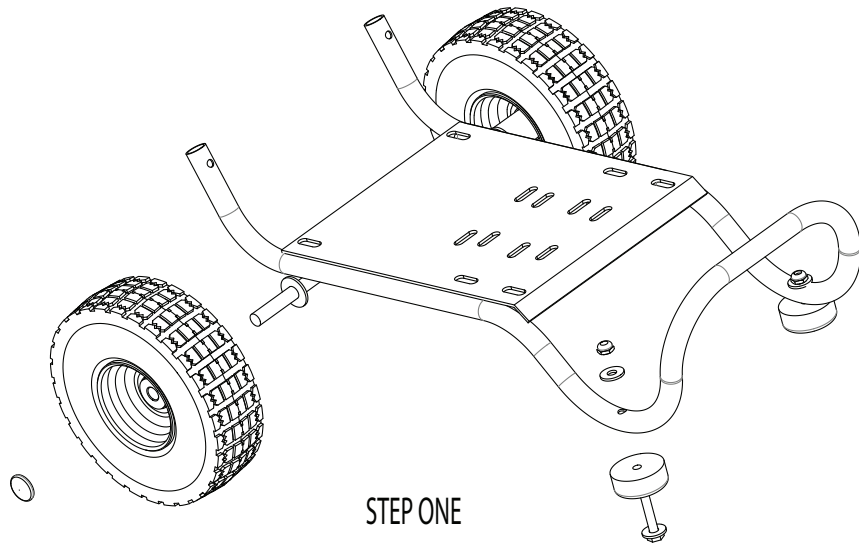


ASSEMBLY INSTRUCTIONS

NOTE: All hardware is stainless steel. A little oil or anti-seize on the threads will help prevent galling.

Step one: Slide both wheels onto the axle on each side of the cart. Press the axle cap onto the end of each axle to retain the wheels.

Put the two M10 washers over the M10 x 50 bolts; then put the two rubber feet over the bolts. Run the bolts through the bottom of the holes in the front of the cart. Secure the feet with washers and nuts.



Step two: Slide the handle over the two upright tube on the back of the cart. Put M8 washers over the two M8 x 40 bolts, and put the bolts through the two holes at the bottom of the handle. Secure the handle bolts with M8 washers and the two knobs.

