



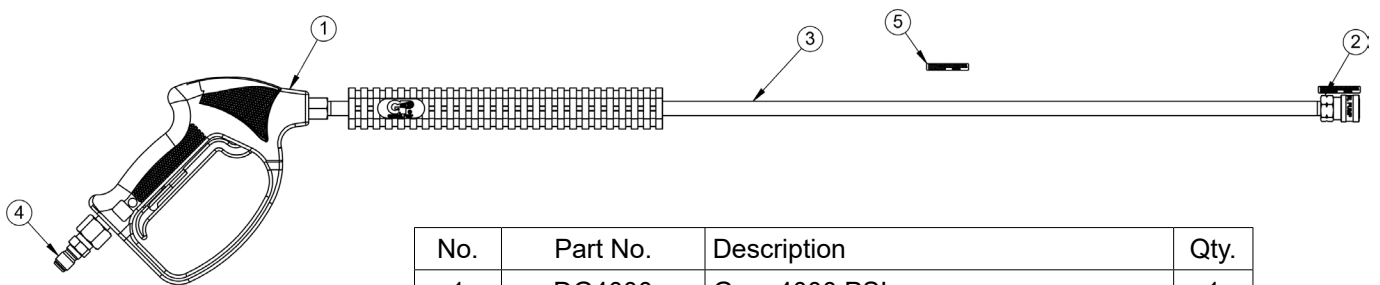
SPECIFICATIONS

Part Number		2100260
Max Volume:		8.0 GPM
Max Pressure:		4,000 PSI
Max Temperature:		220° F
Port Size	Inlet:	3/8" x 3/8" NPT-M Plug
	Outlet:	1/4" QC Coupler
Dimensions		9.5" x 41.25" 1.2"
Weight		2.7 lbs
Materials		Brass, Stainless Steel, Plastic

FEATURES

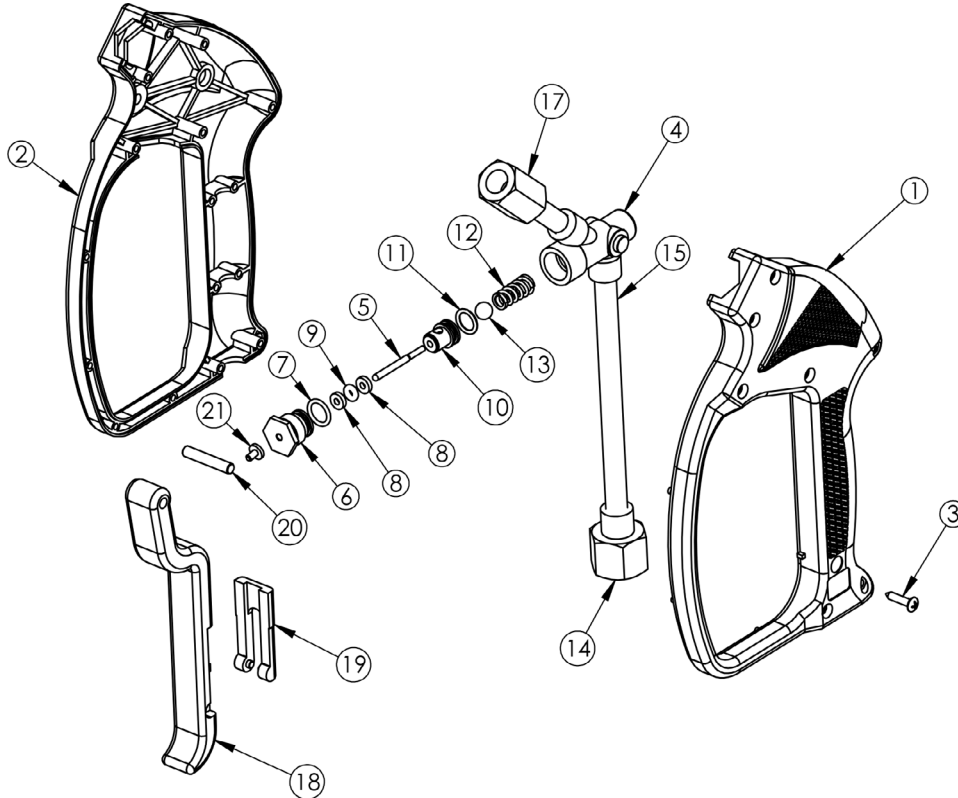
- Economic gun design
- All flow passages designed for minimum pressure drop - maximum flow
- Large comfortable hand grip to accommodate work gloves
- Additional venting for excellent high temperature performance
- Durable glass-filled housing
- Trigger made from 30% glass filled Nylon 6.6
- Spring loaded trigger stop to prevent accidental actuation
- 36" chrome plated insulated lance

2100457 PARTS LIST



No.	Part No.	Description	Qty.
1	DG4000	Gun, 4000 PSI	1
2	D10001	Coupler, 1/4" QC	1
3	DL36ICS	Lance, 36", Insulated	1
4	D11009	Plug, 3/8" x 3/8" NPT-M	1
5	2100166	Label, Prop 65	1

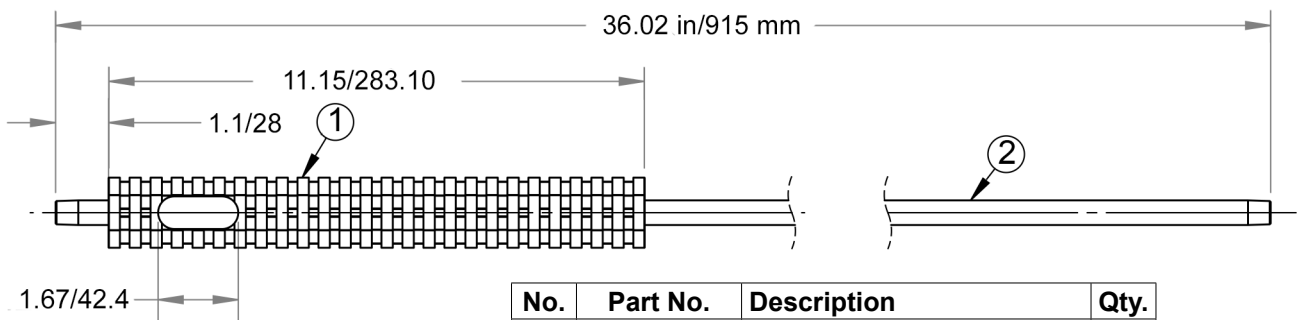
DG4000 GUN PARTS LIST



No.	Part No.	Description	Qty.
1	2660117	Housing, Gun	1
2	2660118	Housing, Gun	1
3	2550065	Screw	7
4	2452012	Forging	1
5*	2520063	Pin, Gun	1
6	2510008	Plug	1
7*	2701013	O-ring	1
8*	2660029	Ring, Backup	2
9*	2701048	O-ring	1
10*	2520006	Seat	1
11*	2701002	O-ring	1

No.	Part No.	Description	Qty.
12*	2720002	Spring	1
13*	2520004	Ball	1
14	2510026	Fitting, Inlet, 3/8" NPT-F	1
15	2520005	Tube, Inlet	1
17	2510095	Fitting, Outlet	1
18	2660111	Trigger	1
19	2660026	Trigger, lock	1
20	3630012	Pin, Trigger	1
21	2520010	Stricker	1
*	2100261	Repair Kit	

DL36ICS LANCE DIMENSIONS & PARTS LIST



No.	Part No.	Description	Qty.
1	2660078	Handle, Lance	1
2	2550031	Lance, 36"	1