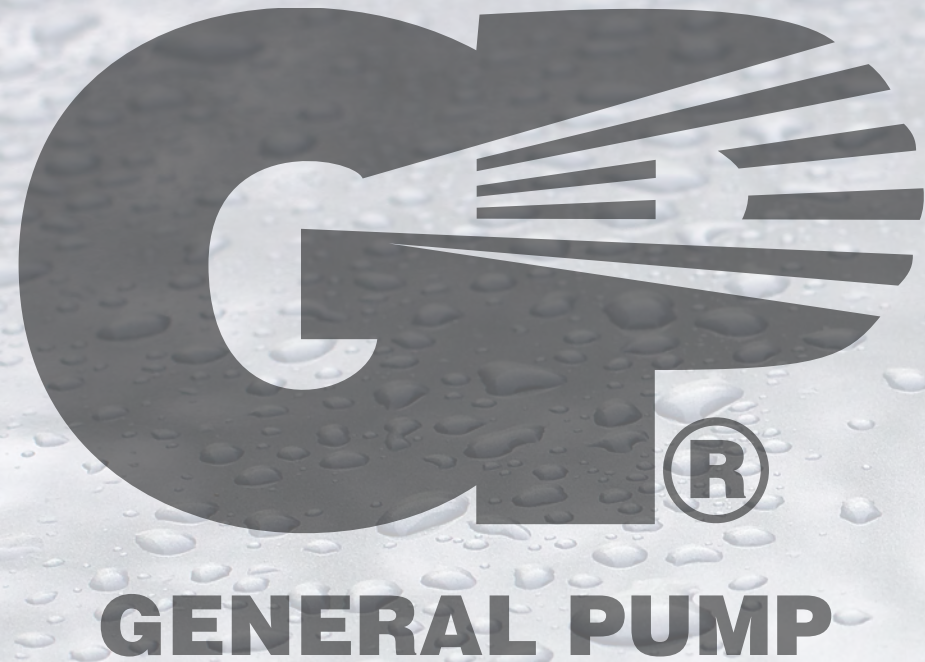




Vehicle Cleaning Pumps & Accessories



Reliability

General Pump products have been industry-tested world-wide for 35 years. General Pump is affiliated with the world's largest manufacturer of high-pressure water plunger pumps and accessories. You can rely on General Pump's wide range of products that fill many niches in the market and cater to customers' specific needs. You can depend on the flexibility and efficiency of General Pump's manufacturing and distribution processes.

Versatility

General Pump offers a variety of pumps, accessories, and nozzle models with flows up to 236 GPM and pressures to 22,000 PSI. General Pump has put millions of pumps into various applications over the last 35 years. These pumps are complemented with a broad array of accessories and nozzles to meet specific customer requirements.

Economic Quality

Maintenance and repair of GP pumps and accessories is simple and inexpensive. When you compare the life-cycle cost of GP to others in the market, you will find GP products are the choice for best value. Availability of replacement parts and kits is always a critical issue when choosing a supplier. General Pump is a US based distributor/manufacturer with a full inventory of pumps, accessories, nozzles, and repair parts ready for immediate delivery.

Commitment to Support

General Pump has a well-trained staff including Inside and Outside Sales, Applications Engineering, and Design Engineering groups ready to provide customers with training, information and support. Comprehensive training schools are held frequently at our world-class training facility.

EMPEROR SERIES

HTXS Series - 63HT- Features:

- Triplex plunger pump
- Features patented "high tech" Packings
- Patented inlet/outlet valve cage
- Maximum fluid temperature of 185° F
- Nickel-plated forged brass manifold with exclusive lifetime warranty
- Specifically designed to handle rigorous duty cycles, high temperatures and chemicals associated with self-service car wash applications.
- Compact and economical design

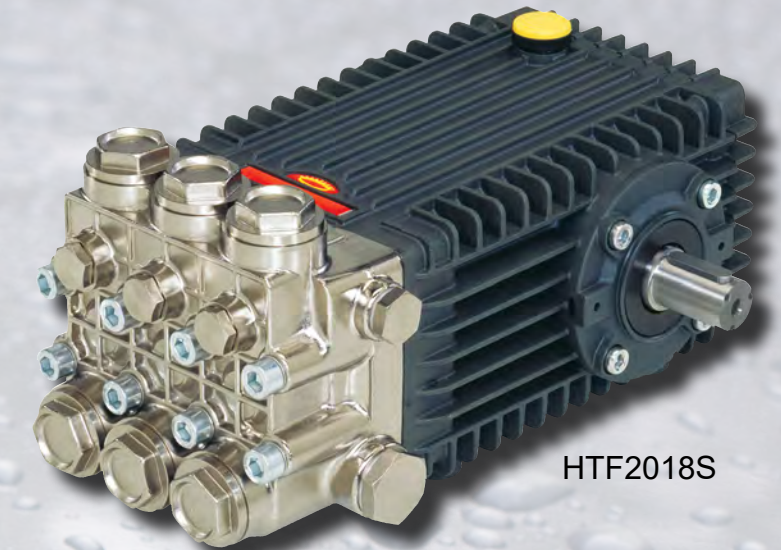


HTXS180S

HTXS SERIES 63HT - 24 MM SOLID SHAFT			
MODEL	GPM	PSI	RPM
HTXS1810S	3.1 GPM	2,000 PSI	1750 RPM
HTXS1812S	3.8 GPM	2,000 PSI	1750 RPM
HTXS1813S	3.5 GPM	2,500 PSI	1450 RPM

HTXS Series - 63HT- Features:

- Triplex plunger pump
- Features patented "high tech" Packings
- Patented inlet/outlet valve cage
- Nickel-plated inlet/outlet valve plugs
- Maximum fluid temperature of 185° F
- Nickel-plated forged brass manifold with exclusive lifetime warranty
- Specifically designed for use in prep units, conveyor and multiple gun applications



HTF2018S

HTF SERIES 66HT - 24 MM SOLID SHAFT			
MODEL	GPM	PSI	RPM
HTF2421S	10.0 GPM	3,000 PSI	1450 RPM
	12.0 GPM	2,500 PSI	1750 RPM
HTF2018S	7.5 GPM	3,600 PSI	1750 RPM
HTF2221S	10.2 GPM	3,000 PSI	1750 RPM

HTS Series - 47HT- Features:

- Triplex plunger pump
- Features patented "high tech" packings
- Patented inlet/outlet valve cage
- Maximum fluid temperature of 185° F
- Nickel-plated forged brass manifold with exclusive lifetime warranty
- Specifically designed to handle rigorous duty cycles, high temperatures and chemicals associated with self-service car wash applications.



HTS2210S

HTS SERIES 47HT - 24 MM SOLID SHAFT			
MODEL	GPM	PSI	RPM
HTS2210S	4.0 GPM	2,300 PSI	1450 RPM
HTS2212S	4.75 GPM	2,300 PSI	1450 RPM
HTS2215S	4.0 GPM	2,300 PSI	950 RPM
	5.0 GPM	2,300 PSI	1200 RPM
HTS2016S	5.6 GPM	3,000 PSI	1450 RPM

Emperor Platinum Series

PEHT Series - 59HT- Features:

- Triplex plunger pump
- Features patented "high tech" packings
- Patented inlet/outlet valve cage
- Forged stainless steel manifold (AISI4120B), nickel-plated
- Nickel-plated crankcase
- Heavy-duty tapered roller bearing
- Designed to handle chemicals and temperatures up to 185° F.
- CAT 5CP/310 replacement
- More information on page 12



PEHT2010S

PEHT SERIES 47HT - 24 MM SOLID SHAFT			
MODEL	GPM	PSI	RPM
PEHT2010S	4.0 GPM	3,000 PSI	1750 RPM
PEHT2012S	4.76 GPM	3,000 PSI	1750 RPM
PEHT2213S	5.55 GPM	3,000 PSI	1750 RPM
PEHT2214S	4.0 GPM	3,000 PSI	1750 RPM
101112	Stainless Steel Cat Rail Kit Conversion		

EMPEROR SERIES

HTCK Series - 71HT- Features:

- Triplex plunger pump
- Features patented "high tech" packings
- Patented inlet/outlet valve cage
- Nickel-plated inlet/outlet valve plugs
- Maximum fluid temperature of 185° F
- Nickel-plated forged brass manifold with exclusive lifetime warranty
- Heavy-duty tapered roller bearings
- Specifically designed to handle rigorous duty cycles, high temperatures and chemicals
- Ideal for use in car wash and other high pressure cleaning applications.
- Designed as a direct replacement for Cat's 3535 with the advantage of GP's patented HT Technology



HTCK4050S

Rail Kits / Misc:

- HT150RCK - Converts Cat 3535
- HT150CWL - Converts CW1541 - Long Pump Stand
- HT150CWS - Converts CW1541 - Short Pump Stand
- 638295 1" NPT Plug, 300 PSI, 304 SS
- 638298 1-1/2" NPT Plug, 150 PSI, 304 SS
- 203411 Bolts for Pump
- 510476 Inlet Fitting Hose Barb, 1-1/2" NPT-M x 2" Hose Barb, Brass

HTCK SERIES 71HT - 40 MM SOLID SHAFT			
MODEL	GPM	PSI	RPM
HTCK4050S	40.0 GPM	1,500 PSI	800 RPM
	45.0 GPM	1,500 PSI	900 RPM

HTCK Series - 70HT- Features:

- Triplex plunger pump
- Features patented "high tech" packings
- Patented inlet/outlet valve cage
- Maximum fluid temperature of 185° F
- Nickel-plated forged brass manifold with exclusive lifetime warranty
- Heavy-duty tapered roller bearings
- Specifically designed to handle rigorous duty cycles, high temperatures and chemicals
- Ideal for use in car wash and other high pressure cleaning applications.



HTCK3623S

Rail Kits / Misc:

- HT125RCK
- HT125CW - Converts - CW Pumps
- 510227 Inlet Fitting Hose Barb, 1" NPT-M x 1-1/2" Hose Barb, Brass

HTCK SERIES 70HT - 30 MM SOLID SHAFT			
MODEL	GPM	PSI	RPM
HTCK3623S	18.0 GPM	1,500 PSI	1000 RPM
	21.0 GPM	1,500 PSI	1150 RPM
	25.0 GPM	1,300 PSI	1350 RPM

CW SERIES

CW 47 Series - Features:

- Forged brass manifold with exclusive lifetime warranty
- The preferred pump frame in the car wash self-service industry
- Dual crankshaft for convenience (CW2040)
- Maximum fluid temperature 165° F
- Large capacity, die-cast, anodized aluminum oil-bath crankcase
- Oversized connecting rods for maximum life
- Solid ceramic plungers with continuously lubricated packings
- Unitized SS inlet and discharge valves
- Cat retrofit kits available



CW2040

CW 47 SERIES - 24 MM SOLID SHAFT			
MODEL	GPM	PSI	RPM
CW2040	3.0 GPM	2,500 PSI	750 RPM
	4.0 GPM	2,000 PSI	1000 RPM
	5.0 GPM	2,500 PSI	1250 RPM
CW24	3.0 GPM	2,500 PSI	750 RPM
	5.0 GPM	1,500 PSI	1250 RPM
CW3040	5.0 GPM	3,000 PSI	1250 RPM
CW3555	5.6 GPM	3,500 PSI	1450 RPM
CW2004	4.0 GPM	2,000 PSI	1750 RPM

Rail Kits / Misc:

- 540015 - Pump Rail - 310
- 540016 - Pump Rail - 530
- 200050 - Bolt - M10 x 20 mm x 1.5 mm
- ZBBH24 - 24 mm "H" Bushing
- 639015 - 8" Pulley 24 mm

CW 69 Series - Features:

- Forged brass manifold with exclusive lifetime warranty
- The preferred pump frame in the two-gun prep conveyor and tunnel car wash industry
- Forged brass manifold with exclusive lifetime warranty
- Large-capacity, die-cast, anodized aluminum oil-bath crankcase
- Maximum fluid temperature 165° F
- Over-sized connecting rod for maximum life
- Solid ceramic plungers with continuously lubricated packings
- Unitized stainless steel inlet and discharge valves



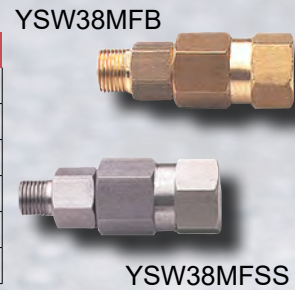
CW1012

CW 47 SERIES - 24 MM SOLID SHAFT			
MODEL	GPM	PSI	RPM
CW1012	10.0 GPM	1,200 PSI	750 RPM
	12.0 GPM	1,000 PSI	900 RPM

VECHICLE CLEANING ACCESSORIES

SWIVELS

BRASS & STAINLESS STEEL SWIVELS						
MODEL	DESCRIPTION	GPM	RATED	MAX	INLET	OUTLET
YSW38MFB	Medium Resistance, Brass	10.5 GPM	3,650 PSI	4,050 PSI	3/8" BSP-M	3/8" BSP-F
YSW14MFSS	Medium Resistance, SS	10.5 GPM	5,100 PSI	5,650 PSI	1/4" BSP-M	1/4" BSP-F
YSW38MFSS	Medium Resistance, SS	10.5 GPM	5,100 PSI	5,650 PSI	3/8" BSP-M	3/8" BSP-F
YSW14MFB	Medium Resistance, Brass	10.5 GPM	3,650 PSI	4,050 PSI	1/4" BSP-M	1/4" BSP-F
YSW9014SS	Medium Resistance, SS, 90 Deg	10.5 GPM	3,650 PSI	4,050 PSI	1/4" BSP-M	1/4" BSP-F



UNLOADERS

VEHICLE CLEANING UNLOADERS						
MODEL	GPM	RATED	MAX	INLET	OUTLET	BYPASS
PULSAR4LP	10.5 GPM	2,300 PSI	2,600 PSI	(2) 3/8" NPT-F	3/8" NPT-F	(2) 3/8" NPT-F
PULSAR4KLP	10.5 GPM	2,300 PSI	2,600 PSI	(2) 3/8" NPT-F	3/8" NPT-F	(2) 3/8" NPT-F
YU21235	21.0 GPM	2,300 PSI	2,600 PSI	1/2" NPT-F	1/2" NPT-F	(2) 1/2" NPT-F
YVB4021HT	21.0 GPM	4,050 PSI	4,500 PSI	1/2" NPT-F	1/2" NPT-F	1/2" NPT-F
YVB5121B	21.0 GPM	5,100 PSI	5,650 PSI	1/2" NPT-F	1/2" NPT-F	1/2" NPT-F
YU2723	37.0 GPM	2,300 PSI	2,600 PSI	3/4" NPT-F	3/4" NPT-F	3/4" NPT-F
YU5221	53.0 GPM	2,200 PSI	2,450 PSI	1" NPT-F	1" NPT-F	1" NPT-F



NOZZLE PACKS



105140

NOZZLE PACKS	
MODEL	DESCRIPTION
105140	Nozzle kit for Laser Wash 4000, Contains all Nozzles for Arch, 19 Nozzles
105144	Nozzle Kit for D & S 5000 - Gantry, 16 Nozzles
105145	Nozzle Kit for D & S 5000 - Blaster, 12 Nozzles
105154	Nozzle Kit for SAA Futura, 30 - 1/8" NPT Nozzles
105167	Nozzle Kit for Oasis 9120 Windvan, 24 Nozzles
105169	Nozzle Kit for Oasis Rocker Panel Sprayers, 10 Nozzles
105193	Nozzle Kit for Hydrospray Rainmaker-Tower, 9 Nozzles

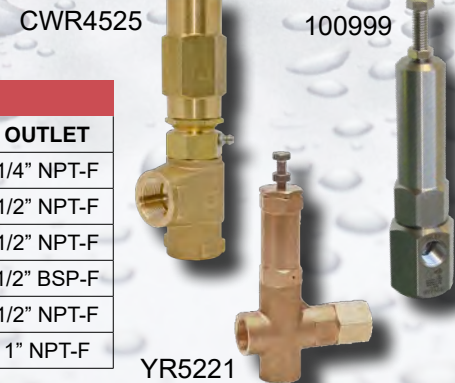


CHECK VALVES

VEHICLE CLEANING CHECK VALVES					
MODEL	DESCRIPTION	GPM	RATED	MAX	OUTLET
YCV14FSS	303 Stainless Steel	6.5 GPM	5,800 PSI	6,500 PSI	1/4" BSP-F
YCV38FSS	Stainless Steel	10.5 GPM	5,800 PSI	6,500 PSI	3/8" BSP-F
YCV12FB	Brass	21.0 GPM	2,200 PSI	2,300 PSI	1/2" BSP-F
YCV12FB	303 Stainless Steel	21.0 GPM	5,800 PSI	6,500 PSI	1/2" BSP-F
YCV34FB	Brass	48.0 GPM	2,200 PSI	2,300 PSI	3/4" BSP-F
YCV34FSS	303 Stainless Steel	48.0 GPM	5,800 PSI	6,500 PSI	3/4" BSP-F

REGULATORS

VEHICLE CLEANING REGULATORS					
MODEL	DESCRIPTION	GPM	RATED	INLET	OUTLET
100892	Nickel-Plated	5.0 GPM	2,000 PSI	3/8" NPT-F	1/4" NPT-F
100998	303 Stainless Steel, Vitcon, PTFE	13.0 GPM	1,000 PSI	3/8" NPT-F	1/2" NPT-F
100999	303 Stainless Steel, Vitcon, PTFE	13.0 GPM	2,000 PSI	3/8" NPT-F	1/2" NPT-F
ZKSX1	316 Stainless Steel	16.0 GPM	3,600 PSI	1/2" BSP-F	1/2" BSP-F
CWR4525	Brass	45.0 GPM	2,500 PSI	3/4" NPT-F	1/2" NPT-F
YR5221	Designed for Touch Free Carwashes	53.0 GPM	2,200 PSI	1" NPT	1" NPT-F



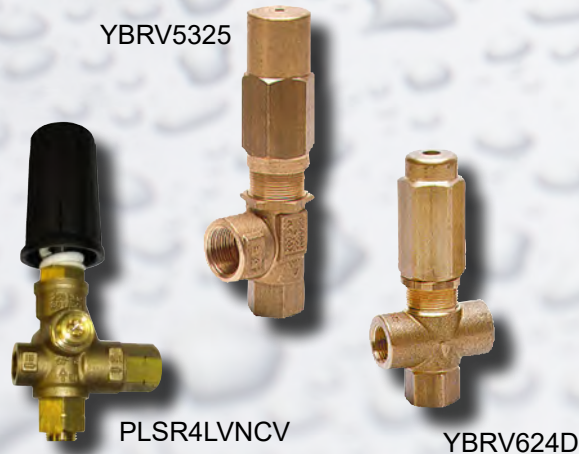
ACCUMULATORS

VEHICLE CLEANING ACCUMULATORS				
MODEL	DESCRIPTION	GPM	RATED	INLET
686011	Non-Rechargeable (pre-set on request)	10.0 GPM	3,000 PSI	1/2" NPT-M
686028	Rechargeable	10.0 GPM	3,000 PSI	1/2" NPT-M
686010	Rechargeable	40.0 GPM	3,000 PSI	1" NPT-M



BALANCED RELIEF VALVES

VEHICLE CLEANING BALANCED RELIEF VALVES					
MODEL	GPM	RATED	MAX	INLET	OUTLET
YBRV624	6.3 GPM	2,200 PSI	2,450 PSI	3/8" BSP-F	3/8" BSP-F
YBRV624D	6.3 GPM	2,200 PSI	2,450 PSI	(2) 3/8" BSP-F	3/8" BSP-F
100268	6.3 GPM	300 PSI	N/A	(2) 3/8" BSP-F	3/8" BSP-F
100269	6.3 GPM	300 PSI	N/A	3/8" BSP-F	3/8" BSP-F
PLSR4LVNCV	10.0 GPM	1,450 PSI	1,500 PSI	(2) 3/8" BSP-F	(2) 3/8" BSP-F
PLSR4HVNCV	10.0 GPM	2,300 PSI	2,600 PSI	(2) 3/8" BSP-F	(2) 3/8" BSP-F
101088	30.0 GPM	350 PSI	N/A	3/4" NPT-F	3/4" NPT-F
YBRV5352	53.0 GPM	2,600 PSI	2,900 PSI	3/4" NPT-F	3/4" NPT-F



SPRAY GUNS

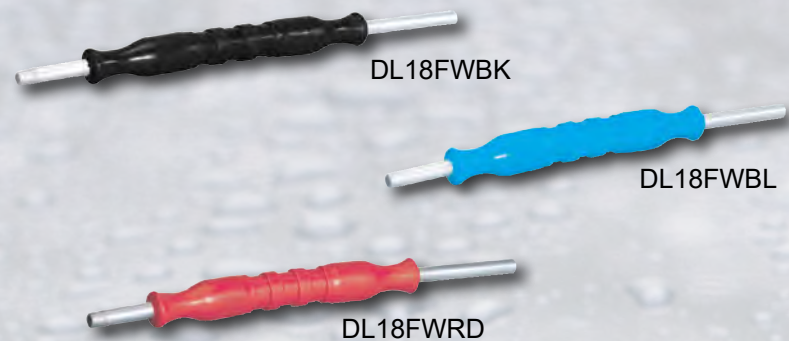
*Inlet: 1/2" NPT-M
*Outlet: Nozzle
Inlet: 3/8" NPT-F
Outlet: 1/4" NPT-F

VEHICLE CLEANING SPRAY GUNS				
MODEL	DESCRIPTION	GPM	RATED	MAX
YGRN47*	Rear entry, Rinsing nozzle	4.7 GPM	73 PSI	N/A
YRL2640	Rear entry	8.0 GPM	3,650 PSI	4,000 PSI
YRL2640W	Rear entry, Weep seat	8.0 GPM	3,650 PSI	4,000 PSI
YG4000	Rear entry	10.5 GPM	4,500 PSI	5,000 PSI
YG4000WN	Rear entry, Weep seat	10.5 GPM	4,500 PSI	5,000 PSI
YG4010	Rear entry	10.5 GPM	4,500 PSI	5,000 PSI
YG4010W	Rear entry, Weep seat	10.5 GPM	4,500 PSI	5,000 PSI
YG5000	Rear entry	10.0 GPM	5,000 PSI	5,000 PSI
YG5000W	Rear entry, Weep seat	10.0 GPM	5,000 PSI	5,000 PSI
DG5010	Rear entry	10.0 GPM	5,000 PSI	5,000 PSI
DG5010W	Rear entry, Weep seat	10.0 GPM	5,000 PSI	5,000 PSI

VECHICLE CLEANING ACCESSORIES

FLEXIBLE LANCES

GPM: 10.0
 Inlet: 1/4" NPT-M
 *Outlet: 1/8" NPT-F
 **Outlet: 1/4" MPT-M



VEHICLE CLEANING FLEXIBLE LANCES			
MODEL	DESCRIPTION	RATED	MAX
DL18FWRD*	18" Red	2,250 PSI	2,500 PSI
DL18FWBL*	18" Blue	2,250 PSI	2,500 PSI
DL18FWBK*	18" Black	2,250 PSI	2,500 PSI
DL18FWRDM**	18" Red	2,250 PSI	2,500 PSI
DL18FWBLM**	18" Blue	2,250 PSI	2,500 PSI
DL18FWBKM**	18" Black	2,250 PSI	2,500 PSI
DL18FWBLMSS**	18" Blue, SST	3,000 PSI	3,000 PSI

REEDLESS FLOW SWITCHES

Inlet: 3/8"-18 NPT-F
 Outlet: 3/8"-18 NPT-F



VEHICLE CLEANING REEDLESS FLOW SWITCHES				
MODEL	GPM	MAX	VOLTAGE	MATERIALS
100975	12.0 GPM	5,000 PSI	250 VAC	Brass, SS
100931	12.0 GPM	5,000 PSI	250 VAC	SS
101068	25.0 GPM	4,000 PSI	250 VAC	Brass, Plastic

CHEMICAL INJECTORS

High Draw, Brass Body, SS Nozzle,
 Viton Elastomers and Ceramic Ball

VEHICLE CLEANING CHEMICAL INJECTORS		
MODEL	ORIFICE	GPM
100947	1.6 mm	1.5 to 2.5 GPM
100948	1.8 mm	2.0 to 3.0 GPM
100949	2.1 mm	3.0 to 5.0 GPM
100950	2.3 mm	5.0 to 8.0 GPM

Max: 4,500 PSI
 Inlet: 3/8" NPT-M
 Outlet: 3/8" NPT-M
 Hose Barb: 1/4"



Max: 4,000 PSI
 Inlet: 3/8" NPT-M
 Outlet: 3/8" NPT-M
 Hose Barb: 1/4"

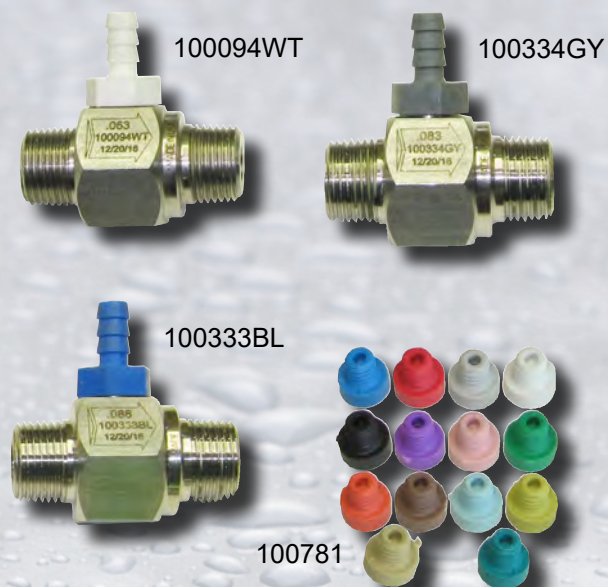
VEHICLE CLEANING CHEMICAL INJECTORS		
MODEL	ORIFICE	GPM
100913	1.45 mm	1.0 to 2.0 GPM
100615	1.8 mm	2.0 to 3.0 GPM
100511	2.1 mm	3.0 to 5.0 GPM

Brass Body, SS Nozzle,
 Viton Elastomers and SS Ball

VECHICLE CLEANING ACCESSORIES

Color-coded Kynar Hose Barb,
 Special Elastomers, 316 SS

Max: 5,500 PSI
 Inlet: 3/8" NPT-M
 Outlet: 3/8" NPT-M
 Hose Barb: 1/4"
 *Hose Barb: 1/4" (2)



VEHICLE CLEANING CHEMICAL INJECTORS				
MODEL	ORIFICE	GPM	REPAIR KITS	Flow Rate at 200 PSI
100336RD	1.45 mm	1.0 to 2.0 GPM	K320RD	1.0 GPM
100094WT	1.6 mm	2.0 to 3.0 GPM	K320WT	1.3 GPM
100835OR	1.8 mm	2.0 to 3.0 GPM	K320OR	1.5 GPM
100334GY	2.1 mm	2.0 to 4.0 GPM	K320GY	2.0 GPM
100333BL	2.2 mm	3.0 to 5.0 GPM	K320BL	2.25 GPM
100339LG	2.3 mm	5.0 to 8.0 GPM	K320LG	3.25 GPM
100541GY*	2.1 mm	3.0 to 5.0	K320GY	2.0 GPM
100781	Metering Tips			



304 SS Body, 316 SS Nozzle
 EPDM Elastomers and 316 SS BALL

VEHICLE CLEANING CHEMICAL INJECTORS		
MODEL	ORIFICE	GPM
100996	1.04 mm	1.0 to 2.0 GPM
101004	1.3 mm	1.0 to 2.0 GPM
100075	1.45 mm	1.0 to 2.0 GPM
100093	2.1 mm	2.0 to 4.0 GPM
100074	2.2 mm	3.0 to 5.0 GPM
100076	2.5 mm	5.0 to 8.0 GPM
101010	3.18 mm	5.0 to 8.0 GPM

Max: 5,500 PSI
 Inlet: 3/8" NPT-M
 Outlet: 3/8" NPT-M
 Hose Barb: 1/4"



Max: 4,000 PSI
 Inlet: 3/8" NPT-M
 Outlet: 3/8" NPT-M
 Hose Barb: 1/4"

VEHICLE CLEANING CHEMICAL INJECTORS		
MODEL	ORIFICE	GPM
100871	1.5 mm	1.0 to 2.0 GPM
100872	2.3 mm	5.0 to 8.0 GPM

Brass Body, SS Nozzle,
 Viton Elastomers and Teflon Ball

VECHICLE CLEANING ACCESSORIES

CONVERSION KITS

CHEMICAL INJECTORS

PVC Body, CPVC Nozzle,
Kynar Hose Barb and Teflon Ball

VEHICLE CLEANING CHEMICAL INJECTORS		
MODEL	ORIFICE	GPM
100938	1.6 mm	2.0 to 3.0 GPM
100853	2.1 mm	3.0 to 5.0 GPM
100955*	1.4 mm	1.0 to 2.0 GPM
100956*	1.6 mm	2.0 to 3.0 GPM
100957*	2.1 mm	3.0 to 5.0 GPM

Max: 250 PSI
Inlet: 3/8" NPT-M
Outlet: 3/8" NPT-M
*Inlet: 1/2" NPT-M
*Outlet: 1/2" NPT-M
Hose Barb: 1/4"



100938

Stainless Steel Kynar Hose Barb

Max: 1,000 PSI
Inlet: 3/8" M Plug
Outlet: 3/8" NPT-M



101029



101038



101033

VEHICLE CLEANING CHEMICAL INJECTORS			
MODEL	ORIFICE	GPM	HOSE BARB
101033	1.04 mm	1.0 to 2.0 GPM	1/4" (1)
101034	1.04 mm	1.0 to 2.0 GPM	1/4" (2)
101035	1.04 mm	1.0 to 2.0 GPM	1/4" (3)
101073	1.3 mm	1.0 to 2.0 GPM	1/4" (1)
101074	1.3 mm	1.0 to 2.0 GPM	1/4" (2)
101075	1.3 mm	1.0 to 2.0 GPM	1/4" (3)
101030	1.45 mm	1.0 to 2.0 GPM	1/4" (1)
101031	1.45 mm	1.0 to 2.0 GPM	1/4" (2)
101032	1.45 mm	1.0 to 2.0 GPM	1/4" (3)
101072	3.18 mm	5.0 to 8.0 GPM	1/4" (3)
101027	1.8 mm	2.0 to 3.0 GPM	1/4" (1)
101028	1.8 mm	2.0 to 3.0 GPM	1/4" (2)
101029	1.8 mm	2.0 to 3.0 GPM	1/4" (3)
101024	2.1 mm	2.0 to 3.0 GPM	1/4" (1)
101025	2.1 mm	2.0 to 3.0 GPM	1/4" (2)
101026	2.1 mm	2.0 to 3.0 GPM	1/4" (3)
101021	2.2 mm	2.0 to 3.0 GPM	1/4" (1)
101022	2.2 mm	2.0 to 3.0 GPM	1/4" (2)
101023	2.2 mm	2.0 to 3.0 GPM	1/4" (3)
101018	2.5 mm	5.0 to 8.0 GPM	1/4" (1)
101019	2.5 mm	5.0 to 8.0 GPM	1/4" (2)
101020	2.5 mm	5.0 to 8.0 GPM	1/4" (3)
101037	3.18 mm	5.0 to 8.0 GPM	1/4" (1)
101038	3.18 mm	5.0 to 8.0 GPM	1/4" (2)

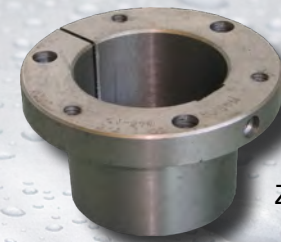
CONVERSIONS

Conversion kits for Cat Pumps CW1541
& CAT3535 to GP Pump HTCK4050S

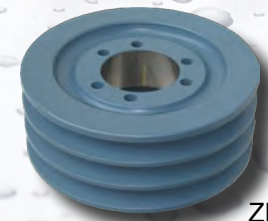
CONVERSION KITS AND PARTS	
MODEL	DESCRIPTION
ZUH40	Bushing, SK, 40mm Shaft, needed if using pulley ZP3B136
ZUH178	Bushing, SD, 1 7/8" Shaft, needed if using pulley ZP3B60
ZP3B136	Pulley, 13.95 OD, 3 Groove, SK Bushing, 13.5, for correct RPM a 6.35" pulley is required on motor (ZP3B60)
ZP3B60	Pulley, 6.35 OD, 3 Groove, SD Bushing, 6.0, needed on motor if currently not using a 6.35" pulley
HT150CWS	Moves pump shaft back 1" and manifold 2 7/8" forward from CW1541
HT150CWL	Moves pump shaft back 6" with manifold in similar location as CW1541, will work on all PDQ syle racks, may need longer belt to properly work
HT150RCK	Mounting Rail Kit to Replace Cat 3535 with HTCK4050S PUMP
510476	1.5" NPT Male x 2" Hose Barb
638295	1" NPT Plug, 304 SS, 3,000 PSI Max Pressure
638298	1.5" NPT Plug, 304 SS, 150 PSI Max Pressure
203411	Mounting Bolts M16 x 1.5 x 35mm



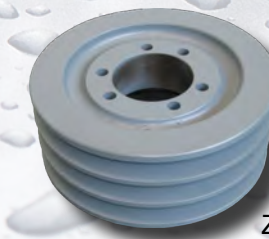
ZUH40



ZUH178



ZP3B136



ZP3B60



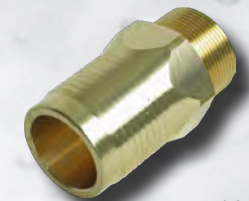
HT150CWL



HT150CWS



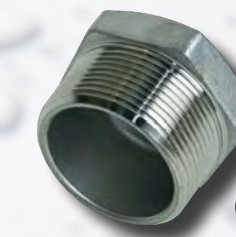
HT150RCK



510476



638295



638298



203411

Emperor Platinum Series



PEHT2010S is a direct replacement for CAT 5CP2140

PEHT2214S is a direct replacement for CAT 310 and 5CP2120



GENERAL PUMP

PEHT EMPEROR PLATINUM SERIES						
MODEL	FLOW	PRESSURE	RPM	EBHP	MAX TEMP	SHP WHT
PEHT2010S	4.00 GPM	3,000 PSI	1750	8.2	185° F	21.0 lbs
	3.43 GPM	3,000 PSI	1450	7.0	185° F	21.0 lbs
PEHT2012S	4.76 GPM	3,000 PSI	1750	9.8	185° F	21.0 lbs
	3.96 GPM	3,000 PSI	1450	8.1	185° F	21.0 lbs
PEHT2213S	2.64 GPM	3,000 PSI	950	5.4	185° F	21.0 lbs
	5.55 GPM	3,000 PSI	1450	11.4	185° F	21.0 lbs
PEHT2214S	3.43 GPM	3,000 PSI	950	7.0	185° F	21.0 lbs
	4.00 GPM	3,000 PSI	950	5.2	185° F	21.0 lbs
101112	Stainless Steel rail kit converts to Cat 310/5CP					

Becoming the NEW standard in the self-service industry!



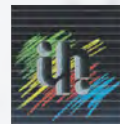
Follow us on YouTube for many service and maintenance videos on some of our most popular products.
[youtube.com/generalpump](https://www.youtube.com/generalpump)



Like us on Facebook at
facebook.com/gpcompanies



GP Companies, Inc
 1174 Northland Drive, Mendota Heights, MN 55120
 Phone: 651.686.2199 Fax: 800.535.1745
www.generalpump.com email: sales@gpcompanies.com
 03-18



General Pump is part of the Interpump Group, the world leader in plunger pumps.