

GENERAL PUMP *A member of the Interpump Group*

Chemical Injector

Triple 1/4" Hose Barbs

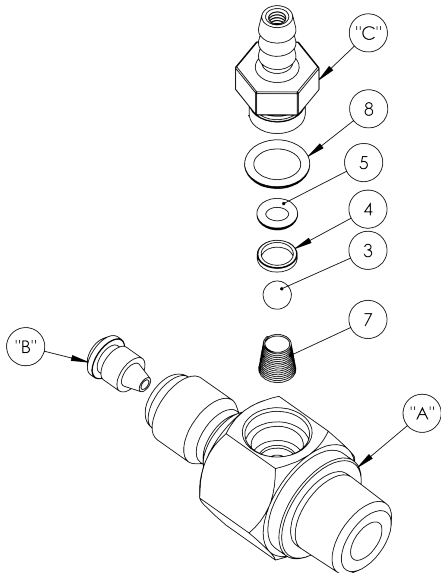
- Designed specifically for typical car Wash Chemicals
- Standard 3/8" Quick Connect (Male) Inlet for easy Install and Servicing
- Triple Barb Configuration
- Full Kynar Hose Barb for superior resistance to concentrated chemical
- PTFE Check Ball, Hastelloy Spring, EPDM Seals
- 100% Made in the USA!




SPECIFICATIONS

| | | | | | | | | |
|---------------------------|---|---------------|---------------|---------------|---------------|---------------|---------------|---------------|
| MODEL | 101072 | 101020 | 101023 | 101026 | 101029 | 101032 | 101075 | 101035 |
| Repair Kit | K325DG | K325LG | K325BL | K325GY | K325OR | K325RD | K325WT | K325WT |
| Orifice (mm) | 3.17 | 2.5 | 2.2 | 2.1 | 1.8 | 1.45 | 1.3 | 1.04 |
| Style | FIXED | | | | | | | |
| Operating Pressure | 500 PSI | | | | | | | |
| Flow Range (GPM) | 5 - 8 | 5.- 8 | 2 - 3 | 2 - 3 | 2 - 3 | 1 - 2 | 1 - 2 | 1 - 2 |
| Max. Temperature | 190° F | | | | | | | |
| Port Sizes | Inlet: 3/8" M Plug | | | | | | | |
| | Discharge: 3/8" NPT-M | | | | | | | |
| | Chemical Port: 1/4" Hose Barb (2) | | | | | | | |
| Weight | .4 lbs. | | | | | | | |
| Materials | 316 Stainless Steel, Kynar, PTFE, Hastelloy, EPDM | | | | | | | |

PARTS LIST



| ITEM NO. | PART NO. | DESCRIPTION | QTY |
|----------|----------|--|-----|
| A | "ITEM A" | BODY, INJ., 3/8" QD X MPT, SEE TABLE | 1 |
| B | "ITEM B" | NOZZLE, INJECTOR, 316SS, SEE TABLE | 1 |
| 3 | 660114 | BALL, 7/32, PTFE | 3 |
| 4 | 660110 | RETAINING RING, INJECTOR | 3 |
| 5 | 701008E | O-RING, KYNAR | 3 |
| | | O-RING, 70 DURO, EPDM, .176ID X .070 CS | |
| C | "ITEM C" | KYNAR HOSE BARB, SEE TABLE | 3 |
| 7 | 720038 | SPRING, CONICAL, .437 FL, HASTELLOY | 3 |
| 8 | 701012E | O-RING, 70 DURO, EPDM, .364 ID X .070 CS | 3 |
| 9 | 800041 | THREAD SEALANT, RED, 10K PSI | A/R |
| 10 | 800004 | PRIMER, ANAEROBIC THD SEALANT | A/R |

 General Pump is a member of the Interpump Group

Ref 301113 Rev. A
01-22



Chemical Injector

Stainless Steel, 1/4" Hose Barb

GENERAL PUMP *A member of the Interpump Group*

| Part Number | "ITEM A" P/N | BODY HOLE DIA. | "ITEM B" NOZZLE P/N | HOSE BARB COLOR | "ITEM C" HOSE BARB P/N | NOZZLE DIA. |
|-------------|-----------------|-------------------|------------------------|--------------------|------------------------------|----------------|
| 101072 | 520337 | 0.150 | 520373 | DK GREEN | 660259DG | 0.125 |
| 101020 | 520337 | 0.150 | 520073 | LT GREEN | 660259LG | 0.098 |
| 101023 | 520334 | 0.116 | 520065 | BLUE | 660259BL | 0.086 |
| 101026 | 520334 | 0.116 | 520066 | GREY | 660259GY | 0.083 |
| 101029 | 520334 | 0.116 | 520325 | ORANGE | 660259OR | 0.070 |
| 101032 | 520331 | 0.076 | 520072 | RED | 660259RD | 0.057 |
| 101075 | 520331 | 0.076 | 520363 | WHITE | 660259WT | 0.051 |
| 101035 | 520331 | 0.076 | 520361 | WHITE | 660259WT | 0.041 |

INSTALLATION

This product is to be used with clean, fresh water. For different or corrosive liquids, contact GP Technical Service Department. With not clean liquids, appropriate filtration should be installed. Select the injector based on the nominal operating rating: system rated pressure, max flow and max temperature. Install valve with direction arrow pointing downstream. For proper operation a control device such as a dual lance wand, quick couple nozzles, or an adjustable nozzle holder must be used to lower the system pressure at the nozzle.

Under no circumstances should the pressure of the system exceed the maximum rated pressure of any component.

TROUBLESHOOTING

| PROBLEM | CAUSE | SOLUTION |
|--|--|--|
| Injector will not draw liquid | Incorrect nozzle System is not in low pressure mode Discharge hose is too long Chemical line is clogged | Check and change nozzle Change or adjust nozzle to put system in low pressure mode Reduce length of discharge hose or change injector* Clear chemical line of obstruction |
| Rate of draw seems too slow | Discharge hose is too long Air leak in chemical line Chemical is too viscous | Reduce length of discharge hose or change injector* Locate and repair leak Reduce chemical with water to decrease its viscosity |
| Chemical injector is leaking from hose barb | Obstruction in hose barb checkvalve Damaged o-ring in checkvalve | Disassemble and remove obstruction Remove and replace o-ring |
| Excessive pressure load on pump, motor or engine | Clogged injector Improperly sized injector orifice | Clear injector orifice of obstruction Change orifice* |

*Contact GP Technical Service for Assistance