

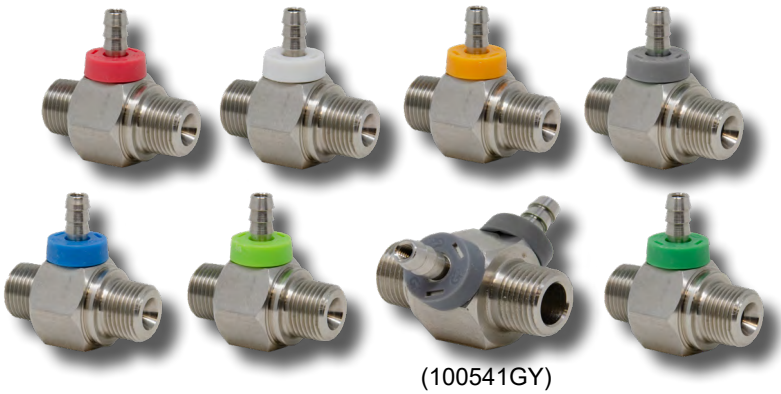
**GENERAL PUMP** *A member of the Interpump Group*

# Chemical Injector

*Color-coded Chemical Injector - Stainless Steel*

**FEATURES**

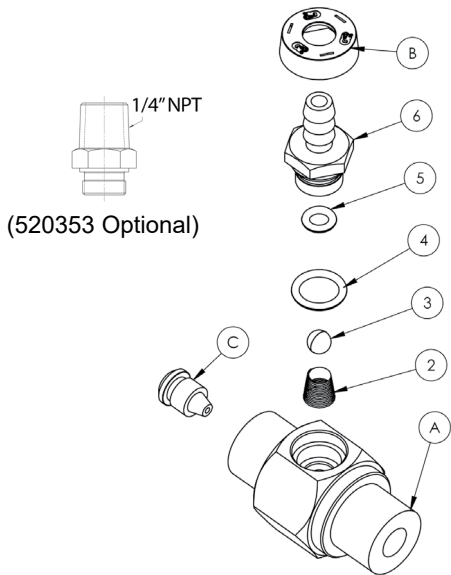
- Designed specifically for car wash applications
- Color-coded for easy identification
- GP's most chemical resistant injector
- Made in the USA
- A cost effective solution to your chemical application needs
- Optional metering tips available (100781)



**SPECIFICATIONS**

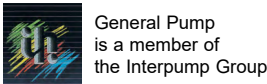
|                           |  |          |          |          |          |          |          |          |
|---------------------------|--|----------|----------|----------|----------|----------|----------|----------|
| <b>Model</b>              | 100336RD   | 100094WT | 100835OR | 100334GY | 100333BL | 100339LG | 100541GY | 101010DG |
| <b>Orifice</b>            | 1.45 mm  | 1.6 mm   | 1.8 mm   | 2.1 mm   | 2.2 mm   | 2.3 mm   | 2.1 mm   | 3.18 mm  |
| <b>Style</b>              | FIXED  |          |          |          |          |          |          |          |
| <b>Operating Pressure</b> | 5500 PSI   |          |          |          |          |          |          |          |
| <b>Flow Range (GPM)</b>   | 1 - 2  | 2 - 3    | 2 - 3    | 2 - 4    | 3 - 5    | 5 - 8    | 3 - 5    | 8 - 10   |
| <b>Max. Temperature</b>   | 190° F   |          |          |          |          |          |          |          |
| <b>Port Sizes</b>         | Inlet: 3/8" NPT-M                                    |          |          |          |          |          |          |          |
|                           | Discharge: 3/8" NPT-M                                |          |          |          |          |          |          |          |
|                           | Chemical Port: 1/4" Hose Barb (100541GY has 2)       |          |          |          |          |          |          |          |
| <b>Weight</b>             | .4 lbs.  |          |          |          |          |          |          |          |
| <b>Materials</b>          | 316 Stainless Steel, Hastelloy, Ceramic, Aflas®/FEPM |          |          |          |          |          |          |          |

**PARTS LIST**



| No. | Part No. | Description                           | QTY. |
|-----|----------|---------------------------------------|------|
| A   | "ITEM A" | Body, Injector, SS, See Table         | 1    |
| 2*  | 720038   | Spring, Conical, .437 FL, Hastelloy   | 1    |
| 3*  | 640002   | Ceramic Ball 7/32"                    | 1    |
| 4*  | 701107   | O-ring, .364 ID x .070 CS, Aflas      | 1    |
| 5*  | 701104   | O-ring, .176 ID x .070 CS, Aflas      | 1    |
| 6*  | 520122   | Hose Barb, Injector, Threaded, SS     | 1    |
| B*  | "ITEM B" | Cap, Injector, Color Coded, See Table | 1    |
| C   | "ITEM C" | Nozzles, Injector, SS, See Table      | 1    |
| 9   | 800041   | Thread Sealant, Red, 10K PSI          | A/R  |
| 10  | 800004   | Primer, Anaerobic Thread Sealant      | A/R  |
| *   | K320     | Repair Kit                            |      |
|     | 100781   | Metering Tips, Optional               |      |
| 6   | 520353   | Adapter, Optional, 1/4" NPT-M         |      |

Optional check valve not included - Customer must add



# Chemical Injector

Color-coded Chemical Injector - Stainless Steel

**GENERAL PUMP** *A member of the Interpump Group*

## PARTS LIST TABLE

| Part Number | "ITEM A"<br>P/N | BODY<br>HOLE<br>DIA. | "ITEM B"<br>HOSE BARB<br>P/N | HOSE BARB<br>COLOR | "ITEM C"<br>NOZZLE P/N | NOZZLE<br>DIA. |
|-------------|-----------------|----------------------|------------------------------|--------------------|------------------------|----------------|
| 100094WT    | 520120          | .076                 | 2660442WT                    | WHITE              | 520075                 | .063           |
| 100333BL    | 520119          | .116                 | 2660442BL                    | BLUE               | 520065                 | .086           |
| 100334GY    | 520119          | .116                 | 2660442GY                    | GREY               | 520066                 | .083           |
| 100336RD    | 520120          | .076                 | 2660442RD                    | RED                | 520072                 | .057           |
| 100339LG    | 520121          | .150                 | 2660442LG                    | LT GREEN           | 520073                 | .098           |
| 100835OR    | 520119          | .116                 | 2660442OR                    | ORANGE             | 520116                 | .070           |
| 101010DG    | 520121          | .150                 | 2660442DG                    | DK GREEN           | 520373                 | .125           |
| 100541GY    | 520123          | .116                 | 2660442GY                    | GREY               | 520066                 | .083           |

## INSTALLATION

This product is to be used with clean, fresh water. For different or corrosive liquids, contact GP Technical Service Department. With not clean liquids, appropriate filtration should be installed. Select the injector based on the nominal operating rating: system rated pressure, max flow and max temperature. Install valve with direction arrow pointing downstream. For proper operation a control device such as a dual lance wand, quick couple nozzles, or an adjustable nozzle holder must be used to lower the system pressure at the nozzle.

Under no circumstances should the pressure of the system exceed the maximum rated pressure of any component.

## TROUBLESHOOTING

| PROBLEM  | CAUSE  | SOLUTION   |
|--|--|--|
| Injector will not draw liquid                    | Incorrect nozzle<br>System is not in low pressure mode<br><br>Discharge hose is too long<br><br>Chemical line is clogged | Check and change nozzle<br>Change or adjust nozzle to put system in low pressure mode<br>Reduce length of discharge hose or change injector*<br>Clear chemical line of obstruction |
| Rate of draw seems too slow                      | Discharge hose is too long<br><br>Air leak in chemical line<br>Chemical is too viscous                                   | Reduce length of discharge hose or change injector*<br>Locate and repair leak<br>Reduce chemical with water to decrease its viscosity  |
| Chemical injector is leaking from hose barb      | Obstruction in hose barb check valve<br><br>Damaged o-ring in check valve  | Disassemble and remove obstruction<br><br>Remove and replace o-ring  |
| Excessive pressure load on pump, motor or engine | Clogged injector<br>Improperly sized injector orifice  | Clear injector orifice of obstruction<br>Change orifice*   |

\*Contact GP Technical Service for Assistance

**WARNING: High Pressure Systems require a primary pressure regulating device (i.e. regulator, unloader) and a secondary pressure relief device (i.e. pop-off valve, relief valve). Failure to install such relief devices properly could result in personal injury or damage to pump or property. GP does not assume any liability or responsibility for the operation of the user's high pressure system.**

