

**GENERAL PUMP** *A member of the Interpump Group*

# Mobile Clutch

## For 24mm Solid Shaft Pump

**Typical Mobile Clutch - Water Pump Applications** In typical water pump applications, the clutch is mounted on the input shaft of the water pump. Since the clutch has an integral pulley, a belt is used as the input to the clutch. This belt is normally driven directly from an electric motor or a gas/diesel engine. When there is no power to the clutch, the water pump does not engage; however when power is activated, the clutch drives the water pump to initiate water flow. In this application, the GP clutch is mounted directly to a General Pump by using an adapter plate.

Used in Carpet Cleaning, Texture Spray Machines, High Pressure Pump applications.



### SPECIFICATIONS

|                         |                           |            |
|-------------------------|---------------------------|------------|
| Pulley Size & Type      | 7" - A Groove, 24mm Shaft |            |
| Width                   | 2.25"                     |            |
| Torque After Burnishing | 75 - 95 lbs.              |            |
| Power Requirement:      | 12V                       | 47 Watts   |
|                         | 24V                       | 45.6 Watts |
| Weight                  | 8 lbs.                    |            |

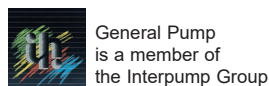
| Part Number | Description             |  |
|-------------|-------------------------|--|
| 100687      | Clutch w/Mounting Plate | 47, 66 and 59(ES) Series, 12V, Dual Groove       |
| 100688      | Clutch w/Mounting Plate | 44, 50, 63 and 58(EP) Series, 12V, Dual Groove   |
| 100719      | Clutch w/Mounting Plate | 47, 66 and 59(ES) Series, 24V, Dual Groove       |
| 100720      | Clutch w/Mounting Plate | 44, 50, 63 and 58(EP) Series, 24V, Dual Groove   |
| 100717      | Clutch w/Mounting Plate | 47, 66 and 59(ES) Series, 12V, Single Groove     |
| 100718      | Clutch w/Mounting Plate | 44, 50, 63 and 58(EP) Series, 12V, Single Groove |

### Reasons for using an Electromagnetic Clutch

- Reduced horsepower consumption from the engine
- Less Cost
- Operator convenience
- Extended pump life
- Simple installation
- Cold weather starting

### General Pump Mobile Clutch Design Advantages

- **Solid forged rotor.** A one-piece solid forged rotor means no chance of internal parts separation. They have an even wall thickness around the coil which gives optimum flux distribution, maximizing torque.
- **Different coil voltages available.** 12 volt is the most common; 24 volt clutches are also available.
- **High temperature, longer-life grease.** Our special long-life grease has shown a significant improvement in life over other standard high temp greases.
- **E-coating.** Where possible, all parts in the clutch are e-coated to give maximum corrosion protection.
- **High-temperature epoxy coil.** To help prevent failure from vibration and outside contaminants, all coils are sealed in the coil shell with a high-temperature epoxy coating.
- **Forged machined pulley.** All GP models use a heavy-duty machined pulley. A stronger pulley resists damage due to abusive environments.
- **Clutches are also available mounted on a General Pump. Please contact your sales representative.**



Ref 300189 Rev. J  
03-22



# Mobile Clutch

For 24mm Solid Shaft Pump



## DIMENSIONS

Fig. 1

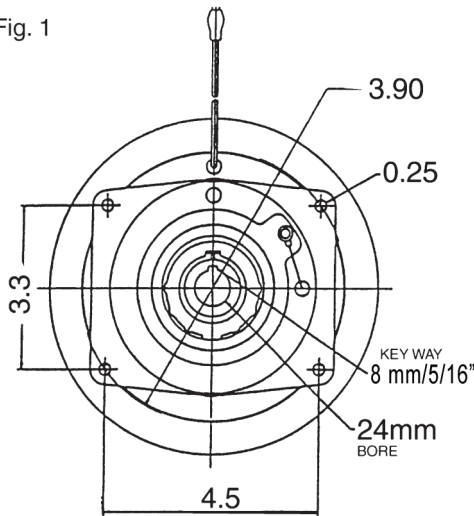
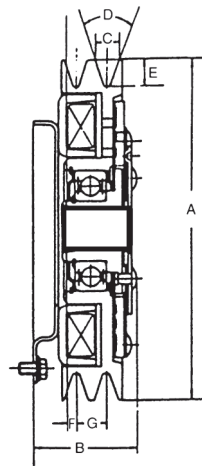


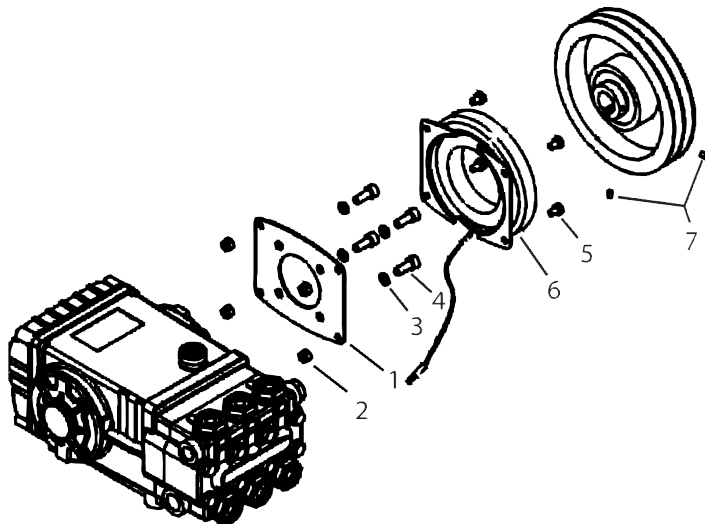
Fig. 2



**Fig. 2 Dimensions**

|   |         |
|---|---------|
| A | 7"      |
| B | 2.08"   |
| C | 0.5"    |
| D | 36 Deg. |
| E | 0.56"   |
| F | 0.19"   |
| G | 0.62"   |

## PARTS LIST



| No. | Part No. | Description                                 | Qty. |
|-----|----------|---|------|
| 1   | 540047   | Adapter Plate, 47, 59, 66 Series            | 1    |
|     | 540048   | Adapter Plate, 44, 50, 58, 63 Series        | 1    |
| 2   | 203201   | Nut, Nylon                                  | 4    |
| 3   | 96701400 | Washer, 47, 59, 66 Series                   | 4    |
|     | 203510   | Washer, 44, 50, 58, 63 Series               | 4    |
| 4   | 200046   | Socket, Capscrew, 47, 59, 66 Series         | 4    |
|     | 200005   | Socket, Capscrew, 44, 50, 58, 63 Series     | 4    |
| 5   | 201004   | Socket, Capscrew                            | 4    |
| 6   | 103053   | Clutch, 2-groove, 12V                       | 1    |
|     | 103054   | Clutch, 2-groove, 24V                       | 1    |
|     | 103048   | Clutch, 1-groove, 12V                       | 1    |
| 7   | 200051   | Set Screw, Knurled Cup Point, M5 x .8 x 6mm | 2    |
| **  | 100163   | OPTIONAL Clutch Alignment Tool              |      |

**\*\* Clutch Coil must be mounted concentric to Pump Shaft to avoid damage. Utilize optional tool 100163. Verify Clutch Pulley does NOT contact Clutch Coil prior to operation.**