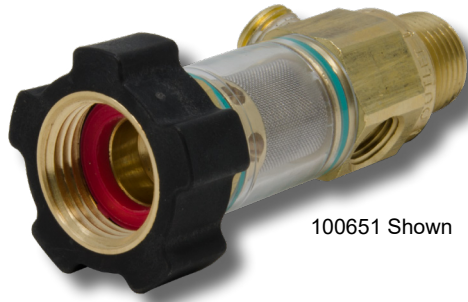


**GENERAL PUMP** *A member of the Interpump Group*

# DuraView

## Inlet Filters



100651 Shown

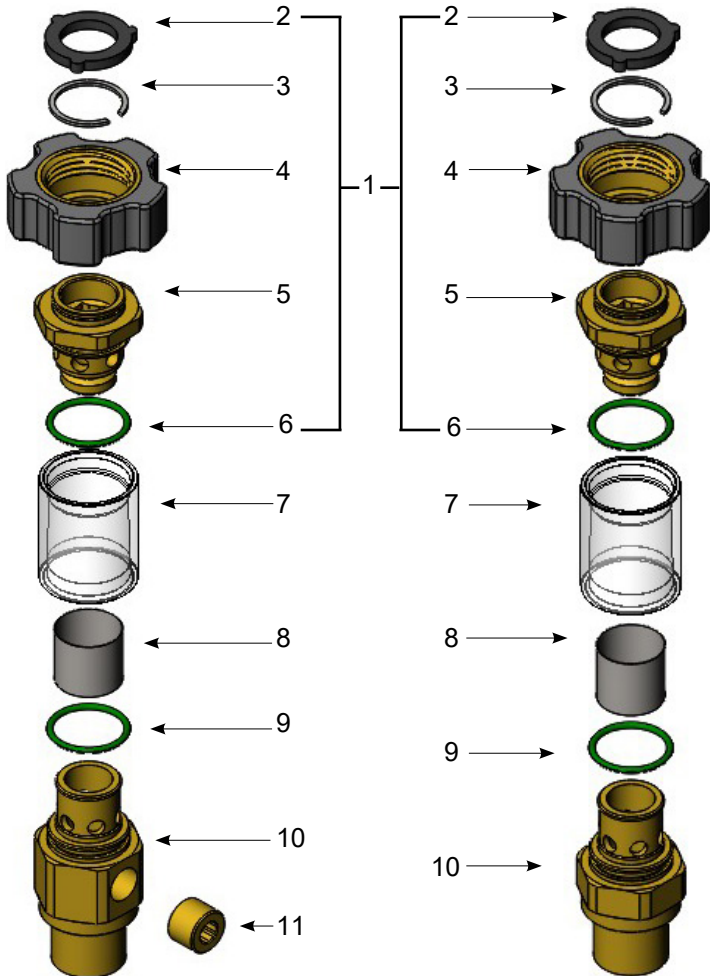
**FEATURES**

- Strongest see-through filter on the market
- Loadbearing brass spine
- Integrated garden hose connector
- Flow through design
- Clear plastic cover
- Available with or without bypass ports
- For general purpose pressure wash use

**SPECIFICATIONS**

Part number:		
1/2" NPT-M		100649
3/8" NPT-M		100650
1/2" NPT-M, 1/4" NPT-F Bypass Port		100651
3/8" NPT-M, 1/4" NPT-F Bypass Port		100652
Max Temp:		180° F
Max Volume:		8.0 GPM
Max Operating Pressure:		150 PSI
Min Operating Pressure:		15 PSi
Dimensions:		1.125" x 3.75"
Weight:		1.5 lb.
Materials:		Brass, Stainless Steel, Buna-N, Nylon

**PARTS LIST**



No.	Part Number	Description	Qty.
1	103070	Garden Hose Fitting Assembly (Includes items 2, 3, 4, 5 and 6)	1
2	700018	Washer	1
3	640088	Retaining Ring	1
4	510029K	Nut, Overmolded	1
5	510296	Cap	1
6	701019	O-ring	1
7	660105	Clear Cover, Plastic	1
8*	640055	Screen, 304 SS, 60 Mesh	1
9*	701019	O-ring	1
10	510294	Body, 1/2" NPT (100649)	1
	510295	Body, 3/8" NPT (100650)	
	510302	Body, 1/2" NPT, 1/4" NPT Bypass (100651)	
	510303	Body, 3/8" NPT, 1/4" NPT Bypass (100652)	
11	510306	1/4-18 Bypass Plug	1
*	100669	Repair Kit	



General Pump is a member of the Interpump Group

