

**GENERAL PUMP** *A member of the Interpump Group*

# Expansion Valve



**Warning:** Outlet of water **MUST** be directed away from people or animals.

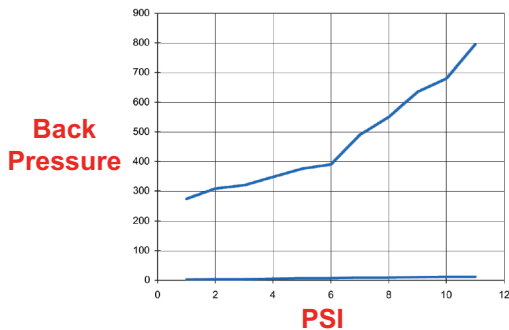
## FEATURES

- Replaces a burst disc and can be used repeatedly
- To be used on or after the coil to prevent the coil from over-heating to a point of steam explosion
- Valve will stay open until the water/pump is turned off, then will reset
- Designed and manufactured in the USA

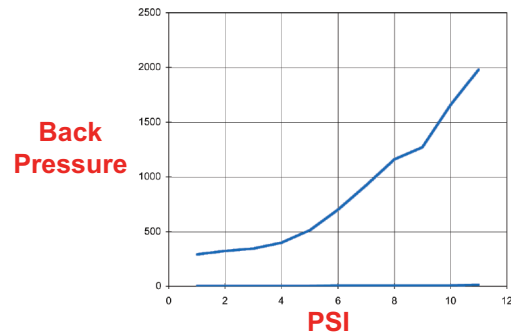
## SPECIFICATIONS

MODEL	100973	100979
Flow Rating	2.0 - 6.0 GPM	
Pressure Rating	6000 PSI	
Outlet	3/8" NPT-M	1/2" NPT-M
Max. Temperature	284° F	
Materials	303 Stainless Steel body, 316 SS Ball	

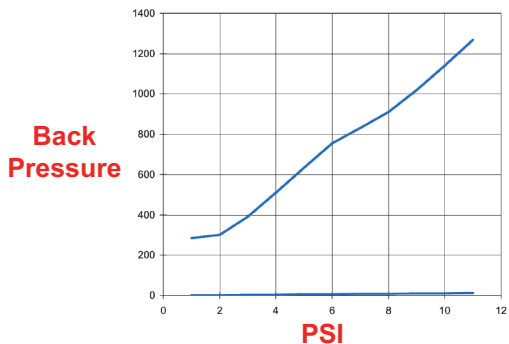
Expansion Valve at 4100 PSI  
Slowly Increasing PSI



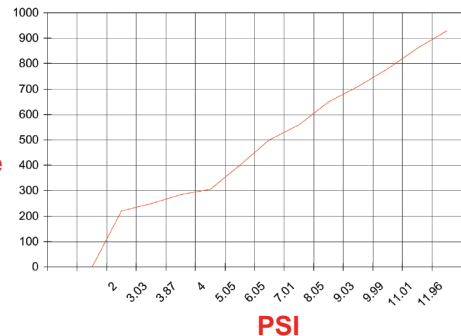
Expansion Valve at 4100 PSI  
Full Flow



Expansion Valve at 4300 PSI



Expansion Valve at 3000 PSI  
Slowly Increasing PSI



General Pump  
is a member of  
the Interpump Group



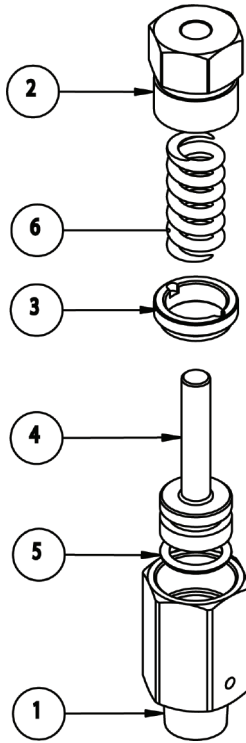
Ref 300755 Rev. B  
12-12



# Expansion Valve

**GENERAL PUMP** *A member of the Interpump Group*

## PARTS LIST



Pos.	Part No.	Description	QTY
1	520296	Body, Expansion Valve	1
2	520288	SRV End Cap	1
3	520295	Piston Stop Ring, Exp. Valve	1
4	103099	Assembly, Piston, Exp. Valve	1
5	31352-113	O-ring, Viton, .548 x .103CS	1
6	720059	Spring, 302 SS	1

Ref 300755 Rev. B  
12-12