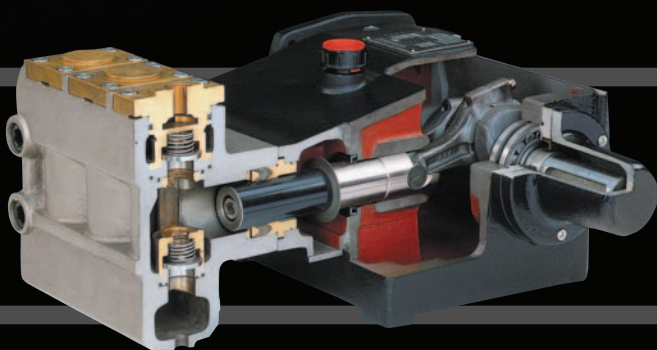


The Power...

Dependability...

Quality...

To Get The Job Done.



J e t t i n g P u m p s



Focusing On Jetter Pump Solutions.

Since 1982, General Pump has worked closely with its customers to provide dependable, high performance pumps and accessories to fit their needs. GP plays a key role in providing application solutions through dedicated engineering teams that are aware of trends within the jetter industry and work closely with OEM partners to produce innovative, cost-effective results.

Tapping Into Strong Relationships.

Backed by the Interpump Group, the world's leader in pump technology and production, GP is uniquely positioned to engineer, manufacture, and quickly deliver a wide array of pumps required by the jetter industry. An additional GP relationship that makes the difference is working with Pratissoli Pumps. Also a division of the Interpump Group, Pratissoli's 50 years of experience gives GP another high-pressure plunger pump resource.

Pumping More Into Your Operation.

GP pumps offer 0.5 to 112.00 gpm flow rates and gives you the features you need most—from a rugged cast iron crankcase and nickel-treated cast-iron or stainless steel manifolds to forged connecting rods with anti-friction bushings and multiple gear reducer options. Plus, easy access ports for draining/priming, an optional SAE hydraulic drive, and unitized valves for easy service.

Benefiting You, Warranting Respect.

GP is committed to providing you the processes and quality you'd expect from an industry leader—whether it's JIT delivery, Vision 2000 (ISO9001) Qualification, on-site service training, and same-day or drop shipping. GP's industrial pumps are hand built and constructed of the highest quality materials and workmanship. In addition, assembly is performed with maximum precision so the finished product will withstand heavy industrial use. But, benefits serve you better with the addition of peace of mind—that's why we've included a five year warranty on all GP Jetter pumps. With all that GP provides—work with GP, it only takes one try, to realize we'll find a way to make sure you're satisfied.

Our mission:

To be the best fluid control device company worldwide, providing our customers with superior and innovative products, coupled with a level of service that exceeds customer expectations.

At GP Companies. "We'll Find A Way!"



Pumps



EKL Series

	GPM	PSI		GPM	PSI
EKL18	7.9 GPM	4350 PSI	EKL25	15.6 GPM	2300 PSI
EKL20	9.8 GPM	3600 PSI	EKL30	16.3 GPM	2150 PSI
EKL22	11.9 GPM	3050 PSI	EKL32	18.5 GPM	1850 PSI

HD Series

	GPM	PSI		GPM	PSI
HE18A	7.9	7250	HD22	12.0 GPM	4650 PSI
HE20A	10.0	5800	HD25	15.6 GPM	3600 PSI
HDS25A	18.0	4000	HD30	16.3 GPM	2600 PSI



KLS Series

	GPM	PSI		GPM	PSI
KLS36	32.2 GPM	2200 PSI	KLS45	40.1 GPM	1750 PSI
KLS40	35.0 GPM	2000 PSI	KLS50	43.3 GPM	1450 PSI

MSS Series (Available with SAE Hydraulic Drive)

	GPM	PSI		GPM	PSI
MSS36	35.4 GPM	5000 PSI	MSS50	68.7 GPM	2470 PSI
MSS40	43.9 GPM	3900 PSI	MSS55	83.0 GPM	2000 PSI
MSS45	55.5 GPM	3050 PSI	Available with 1500 RPM and 1800 RPM gear reduction.		



MH Series

	GPM	PSI		GPM	PSI
MH45	51.2 GPM	4350 PSI	MH60	91.1 GPM	2400 PSI
MH50	63.4 GPM	3500 PSI	MH65	107.0 GPM	2050 PSI
MH55	76.6 GPM	2900 PSI	Available with 1500 RPM and 1800 RPM gear reduction.		

LH Series

	GPM	PSI		GPM	PSI
LH40	49.7 GPM	4350 PSI	LH55	93.8 GPM	2300 PSI
LH45	62.9 GPM	3500 PSI	LH60	112.0 GPM	2050 PSI
LH50	77.4 GPM	2900 PSI			

Available with 1500 RPM, 1750 RPM and 1900 RPM gear reduction.



VH Series

	GPM	PSI		GPM	PSI
VH12	2.6 GPM	17500 PSI	VH16	4.7 GPM	10800 PSI
VH14	3.6 GPM	14500 PSI	VHS16	6.0 GPM	10150 PSI

VS Series (Available with SAE Hydraulic Drive)

	GPM	PSI		GPM	PSI		GPM	PSI
VS16	7.1 GPM	21750 PSI	VS20	11.1 GPM	13050 PSI	VS24	16.1 GPM	8700 PSI
VS18	9.0 GPM	17400 PSI	VS22	13.5 GPM	10800 PSI			

Available with 1500 RPM, 1800 RPM and 2200 RPM gear reduction.



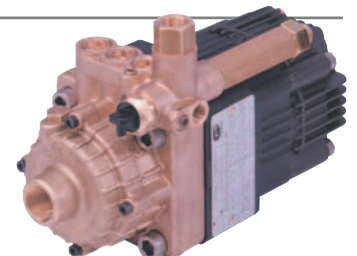
SH Series

	GPM	PSI		GPM	PSI		GPM	PSI
SH20	11.6 GPM	17400 PSI	SH24	16.6 GPM	13800 PSI	SH28	22.7 GPM	10150 PSI
SH22	14.0 GPM	15950 PSI	SH26	19.5 GPM	11600 PSI	SH30	25.9 GPM	8700 PSI

Available with 1500 RPM and 1750 RPM gear reduction.

Hydraulic Series Pumps (One-year warranty)

	HYDRAULIC MAX GPM	RATIO	WATER MAX GPM	HYDRAULIC MAX PRESSURE	RATIO	WATER MAX PRESSURE
HWB1512	6.6 GPM	0.5	3.3 GPM	2485 PSI	1.75	4350 PSI
HWB1812	6.6 GPM	0.67	4.4 GPM	3020 PSI	1.2	3625 PSI
HWB2112	6.6 GPM	1.0	6.6 GPM	3625 PSI	0.8	2900 PSI
HWB2512	6.6 GPM	1.3	8.6 GPM	3625 PSI	0.6	2175 PSI



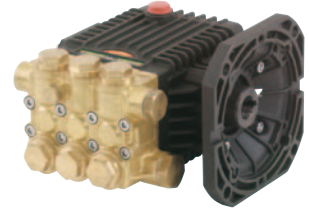
Pumps



Duplex Series



63 Series Triplex



60 Series Triplex



47 Series Triplex



66 Series, Triplex High-Flow And High-Pressure

Accessories

Hose Reels



Valves



Industrial Regulating Valves



Industrial Pneumatic Valves

Guns



Hose

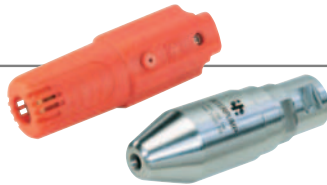


Clutches



Industrial Spray Guns

Nozzles



General Pump is part of the Interpump Group, the World Leader in Plunger Pumps.



GP Companies, Inc.
1174 Northland Drive
Mendota Heights, MN 55120
Phone: 651.454.6500
Fax: 651.454.8015
Toll Free: 888.474.5487
www.generalpump.com
email: sales@gpcompanies.com

Distributed By

