

EXPANDING

the Limits



Pressure Wash Market • Car Wash Market • Desalination Market • Industrial Market
(flows up to 112 gpm and pressures to 20,300 psi)

▶ Since 1980, General Pump has been working closely with customers in the pressure wash, industrial, car wash and desalination markets to create high pressure pumps and accessories that meet the needs of virtually any application imaginable. As these markets continue to grow, General Pump will continue to develop high-pressure products that offer the performance and reliability necessary for manufacturers to expand their market segments.

Pressure Wash

General Pump is the leading supplier of high-pressure plunger pumps for pressure washers, in both the consumer and commercial segments of the world market. Innovative design and production

processes enable us to deliver a broad range of pumps and accessories that are tailored to the special needs of the pressure wash industry. Features such as our magnetic clutch drive make General Pump the number one choice of industry professionals.



◀ T Series 47 - up to 5.6 gpm and 5000 psi

Our T Series 47 is the recognized standard in the heavy-use rental market. Its forged brass manifold with a lifetime warranty, oversized connecting rods, premium tapered roller bearings, solid ceramic plungers, and continuously lubricated packings provide the reliability and performance demanded by professionals worldwide.



◀ EZ Series 44 - up to 5.5 gpm and 4000 psi

The EZ Series 44 is a heavy duty series of pumps for electric or gasoline engines, direct couple applications up to 13.0 HP. Also available for pulley drive.



◀ TT/TP Series 51 - up to 3.5 gpm and 2500 psi

TT/TP Series 51 is a compact line of pumps for electric or gasoline engines, direct couple applications up to 6.5 HP. Also available for pulley drive.

Car Wash

General Pump is a leading supplier of pumps and accessories to the car wash industry. Our pumps are quieter, less expensive to service, and more economical to operate than any other competitive product. With larger connecting rods, crankshafts and manifolds, they are the clear choice for long term, reliable service.



◀ CW 1635 - 35 gpm @ 1600 psi

Designed as a direct replacement for the Car 3535, the CW 1635 establishes a new durability standard with oversized, self-aligning spherical bearings, one-piece stacked inlet and outlet valves for maximum volumetric efficiency and solid ceramic plungers to prevent leakage into the crankcase.



◀ MD-15 - 12 gpm @ 1800 psi

Designed for superior performance in difficult water feed conditions, the MD-15 features a 1" inlet to minimize cavitation problems and is ideal for the demands found in prep station applications.



◀ CW 2040 - 5 gpm @ 1500 psi

Designed to handle the rigorous duty cycles, high temperatures and chemicals associated with self-service car washes, the CW 2040 is a cost-effective choice for new or retrofit systems. Larger connecting rods, crankshaft, crankcase, and manifold make it the durable choice for discriminating buyers.



◀ CW 1541 - 41 gpm @ 1200 psi

Designed specifically for touch-free, automatic systems, the CW 1541 substantially reduces pulsation and the potential for destructive cavitation. Its large brass manifold, solid ceramic plungers and bore/stroke combination allow higher operating pressures at full flow without increasing stress on drive components.

Corrosive Environment

General Pump is a leading player in the world desalination market with a complete line of industrial stainless steel pumps with flows ranging from .5 to 86.9 gpm. Designed to meet the rigors of on-off cycling and corrosive environments, our stainless steel and aluminum/bronze pumps are compact, smooth running, and long lasting.



◀ WM Series - up to 4.2 gpm 1500 psi

The WM Series is setting the standard for small desalination systems with its compact 54in³ (350 cm³) footprint, ultra-quiet operation and 316L stainless steel construction. Quality is assured with a 5 year limited warranty.



◀ MDS Series - up to 12.0 gpm and 2500 psi

The MDS-15 extends General Pump's innovative small pump offering for corrosive environments. Its 316L stainless steel manifold and wetted parts, and dual 1" inlet provide superior performance and reliability.



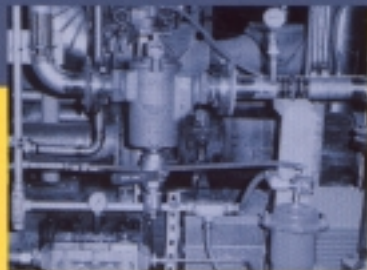
◀ LHZ Series - up to 112.0 gpm and 4350 psi

The LHZ is designed for rugged applications requiring higher flow rates and superior corrosion protection. Features 316L stainless steel manifold.

Stainless Steel We also offer a complete line of stainless steel pumps for industrial applications requiring corrosion resistance with flows ranging from .5 to 112 gpm and pressures up to 4350 psi.

Industrial

General Pump offers one of world's widest ranges of high pressure plunger pumps with product flows from .5 to 112 gpm and pressures up to 20,300 psi for a variety of industrial applications including: food processing, agricultural, chemical processing, reverse osmosis, mist cooling, jetting, homogenization, sanitizing, odor control and machine tool cooling to name a few. Our product line ranges from cast iron bodied, general-purpose pumps to high volume, high-pressure models with stainless steel manifolds for harsh chemical environments. With more than 3.5 million pumps in service, we have the performance and quality you can rely on.



◀ T Series 47 - up to 5.6 gpm and 5000 psi

The T Series 47 is an exceptionally durable design. It features a proven crankcase and bearing design, forged brass manifold, and stainless steel piston guides.



◀ MDS-15 - up to 12 gpm and 2500 psi

Designed with a passivated 316L stainless steel manifold for the ultimate corrosion resistance, the MDS-15 features the largest dual inlet port in the industry for optimal performance. Innovative high / low pressure seal design and parallel inlet and outlets provide for easy maintenance, improved efficiency and longer life.



◀ MS Series - up to 84 gpm and 4350 psi

One of several pump series featuring a cast iron pump body and manifolds in nickel treated cast iron or 316 stainless steel. Ideal for all types of heavy duty process applications.

Accessories

General Pump offers a complete range of accessories that integrate with the pump design for specific application need.

- Unloader Valves
- Regulating & Relief Valves
- Safety Relief Valves
- Pump Thermal Protectors
- Chemical Injectors
- Spray Guns and Lances
- Pressure & Flow Switches
- Thermostats
- Rotating Nozzles
- High Pressure Spray Tips

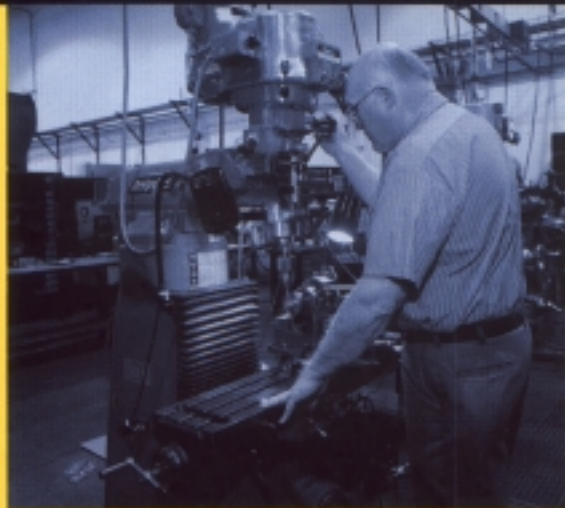


◀ Tank Cleaning Nozzles - General Pump

also offers a range of tank cleaning nozzles that greatly improve efficiencies in cleaning tanks, totes, drums, and containers. All models offer 360° orbital coverage and stainless steel construction.

Engineering & Support

As the world leader of high pressure plunger pumps to a wide range of markets, General Pump is committed to the continuous development of new products. Our market support system is the strongest in the industry, ensuring on-time delivery of replacement parts as well as technical assistance when required. For more information on how General Pump can serve your product development and production needs, contact your regional sales team or the factory direct.



General Pump • 1174 Northland Drive • Mendota Heights, MN 55120
Toll Free 888-696-2552 • 651-454-6500 • FAX 651-454-8015
E-mail: salestr@gpcompanies.com • www.generalpump.com